

Australian Journal of Philately

(Incorporating: The Date Stamp and Australian Journal of Postal History)

No. 100 June 2007



IN THIS ISSUE

Australian Postal Rates 1937- 53 Part 2

Women's Work Exhibition - Melbourne 1907

Bangkok B - Overprints

Tracking the Supply of Colonies' Newspaper Wrappers

The Kangaroos' Put Australia onto the World Map

Urban Myths

Hand-Held Date-Stamp Notes

ISSN 1442-1313

Hand-Held Date Stamps

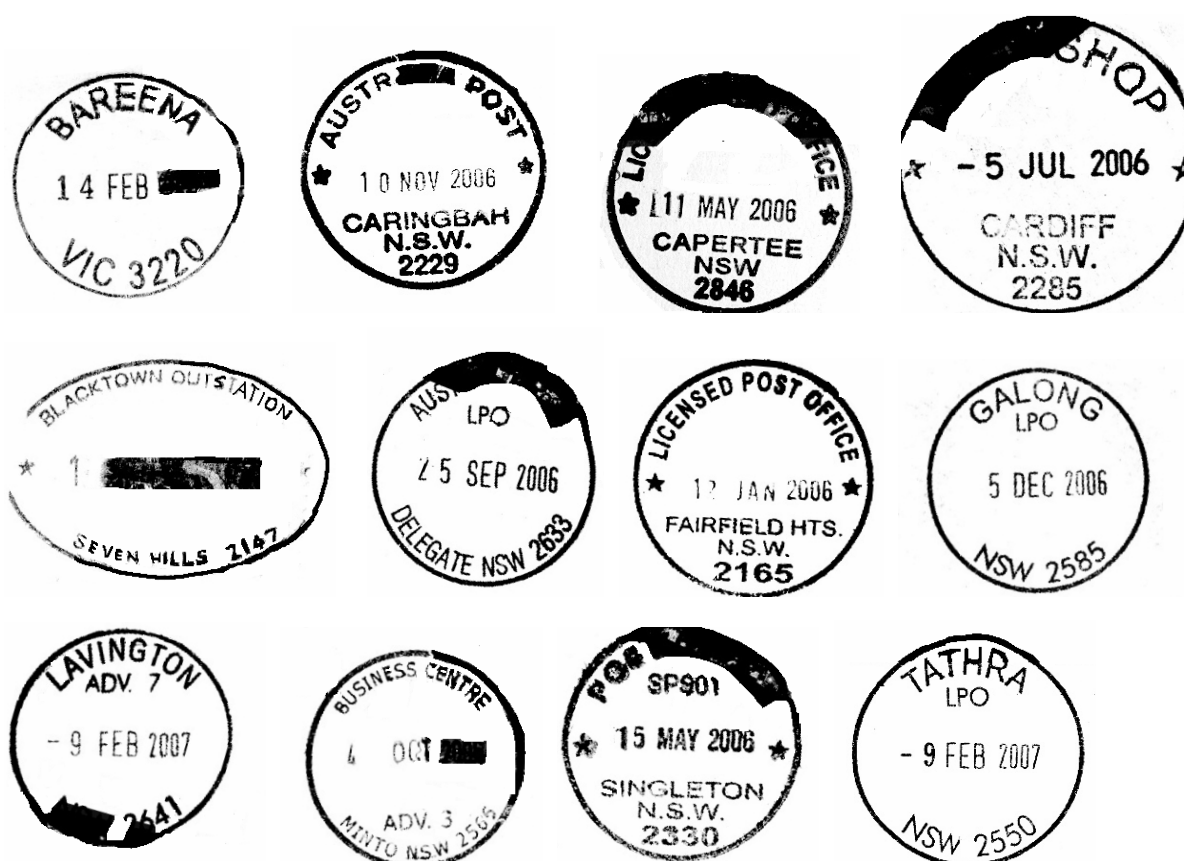
Co-ordinated by George Vearing

It is wonderful to reach the milestone of 100 editions of the journal and I am pleased to be a small part of it and most of the credit must go to the willing members who continually support this column.

When down at Cowes for a few days, I found out that they had replaced all of their datestamps with 3 identical new ones, one of which is illustrated in this edition and this just reinforces that we must always be on the lookout for new issues.

Thanks to Richard Peck, Ian Cutter, Simon Alsop and Colin Salt for their support in providing material for this column.

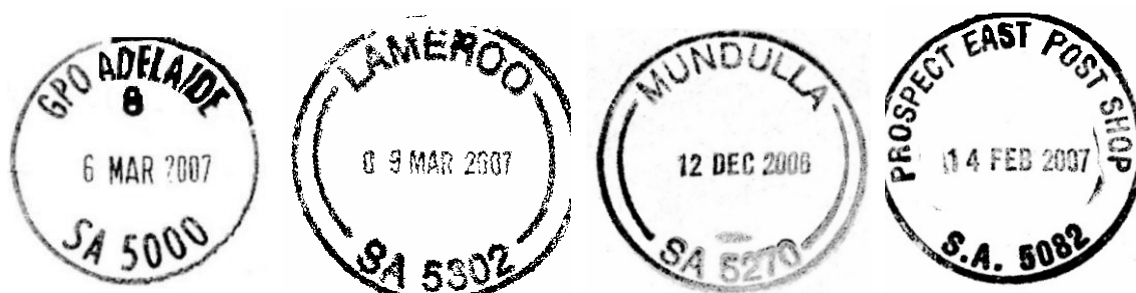
N.S.W.



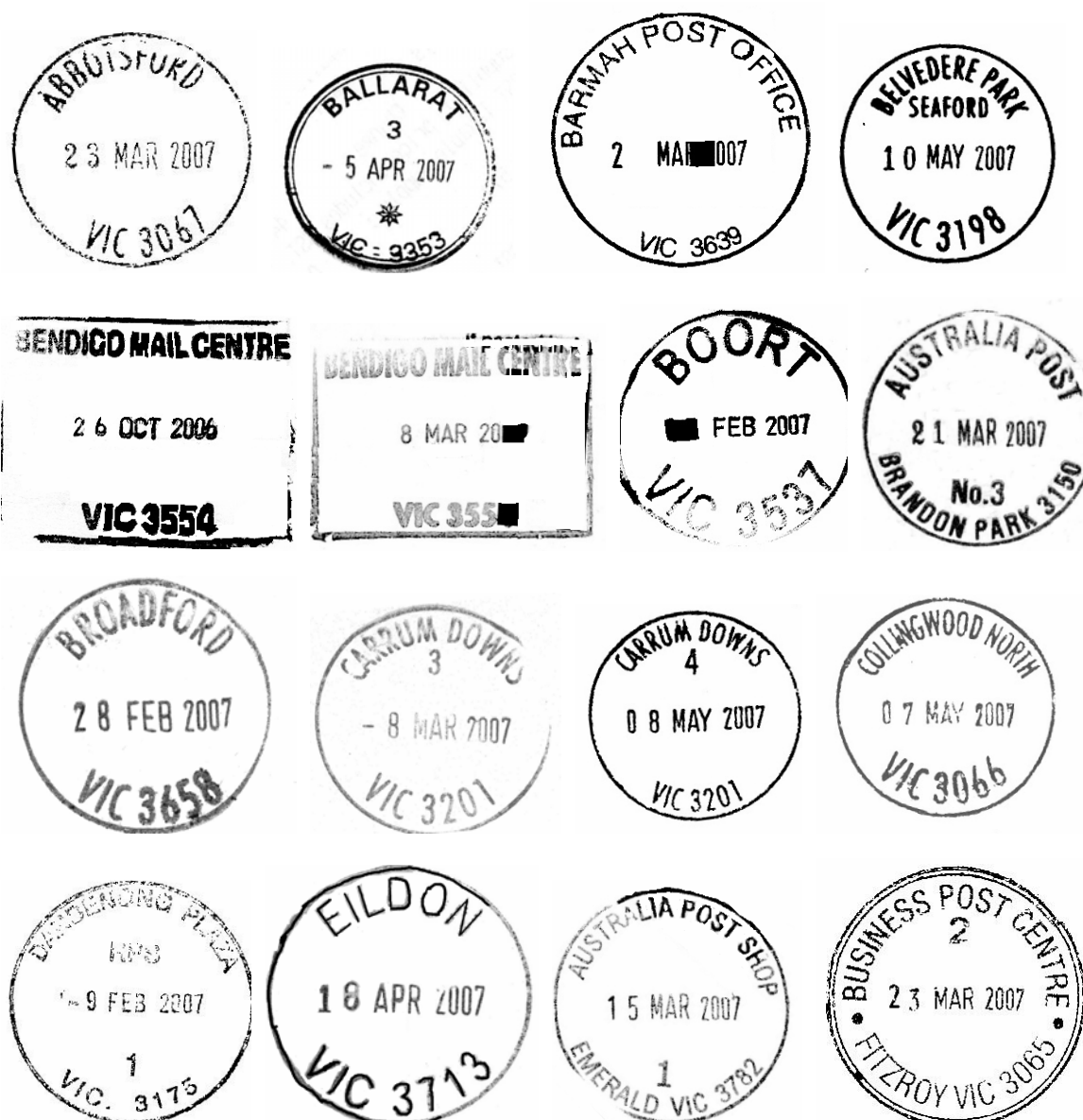
TAS.



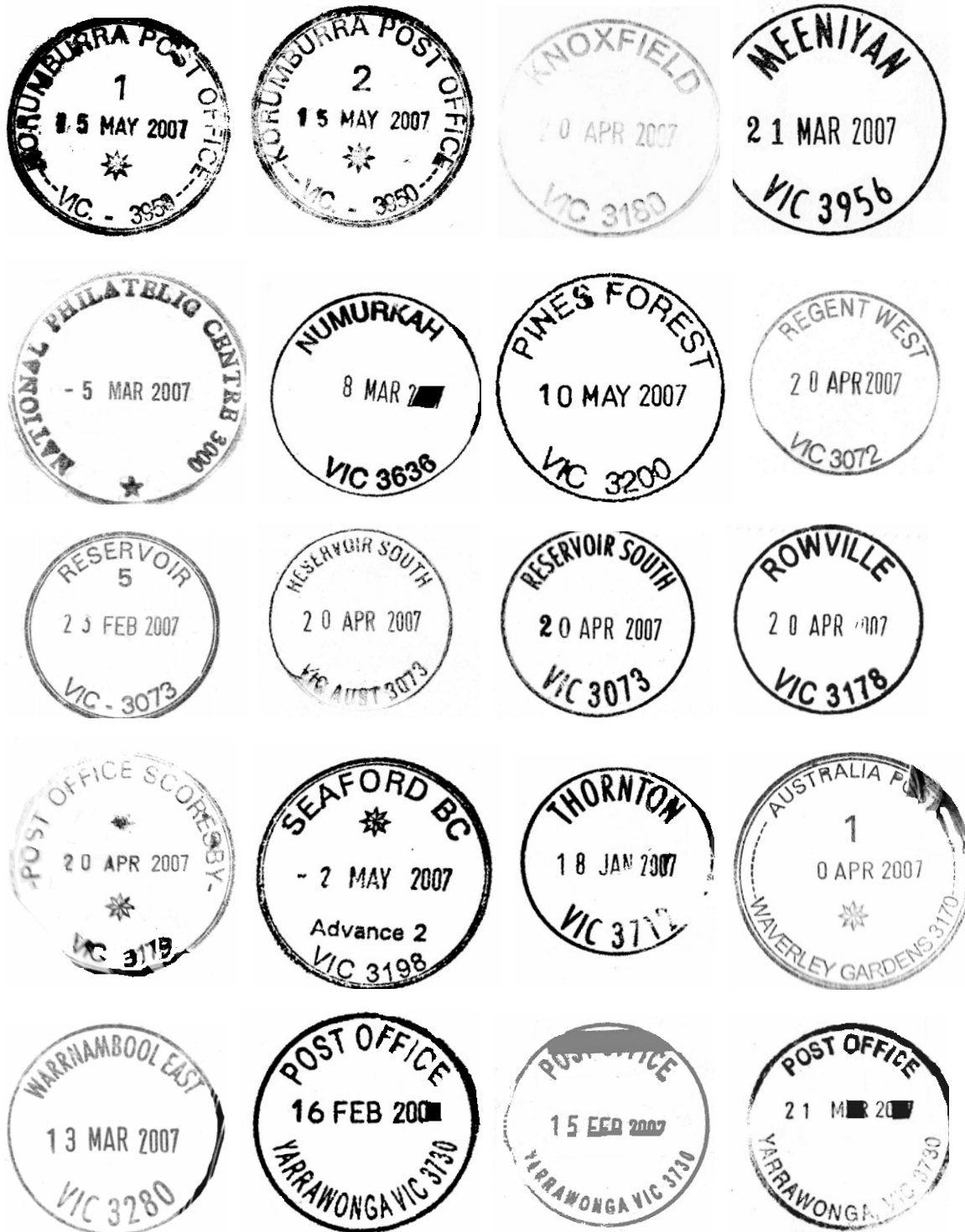
S.A.



VIC:-EMERALD Also 2, WAVERLEY GARDENS Also 4,5.Earlier Datestamps:-
 ABBOTSFORD(79/35), BENDIGO MAIL CENTRE(93/35), BROADFORD(93/35),
 DAYLESFORD(87/34),FOSTER(94/31),MEENIYAN(82/37)RESERVOIR(76/36),
 THORNTON(74/64),WARRNAMBOOL EAST(98/27),YARRAWONGA(94/31).



VIC-Cont.



W.A.: -Earlier Datestamp:-MUKINBUDIN (77/36).

