

# The Bulletin



The British Society of Australian Philately

*Founded 1933*

## CONTENTS



<b>EDITOR'S INTRODUCTION, MEMBERSHIP, SECRETARY'S LETTER &amp; NOTICES.....</b>	<b>106</b>
<b>NOTICE OF ANNUAL GENERAL MEETING .....</b>	<b>108</b>
<b>CONTINUING RESEARCH ON THE GV 1D VARIETIES (Part 61) by Gordon Monk, Bert Wajer and the late Paull Kaigg .....</b>	<b>109</b>
<b>RESEARCH ON AUSTRALIAN RAILWAY LUGGAGE AND PARCEL LABELS (Part 8) by Ian Spencer.....</b>	<b>118</b>
<b>CITY OF KHARTOUM FLYING BOAT RUNS OUT OF FUEL; ONLY PILOT SURVIVES (Part 3) by Brian Peace .....</b>	<b>125</b>
<b>ANNEX TO PREVIOUS ARTICLE – REQUEST FOR CRASH COVERS: SCIPIO, CYGNUS, ATHENA, BOADICEA, CALPURNIA, KORANGA – Brian Peace.....</b>	<b>131</b>
<b>NOTES &amp; QUERIES. SOUTH AUSTRALIA, 1894-1906, THE TANNENBERG COLOUR TRIALS by Sandy Forbes .....</b>	<b>131</b>
<b>NOTES &amp; QUERIES. KANGAROO VARIETIES – SOME OBERVATIONS by Ian Carter (1810) .....</b>	<b>132</b>
<b>SOME RARE MISSING COLOURS FROM NORFOLK ISLAND AND CHRISTMAS ISLAND by Richard Guy FACCCNSW .....</b>	<b>133</b>
<b>MEMBER PROFILE – DAVID COLLYER .....</b>	<b>134</b>
<b>NOTES &amp; QUERIES. FORGED 5/- KANGAROO by Nick Stuart.....</b>	<b>137</b>
<b>BOOK REVIEW – Brusden White Dues Catalogue (3<sup>rd</sup> edition) – Alan Cross .....</b>	<b>138</b>
<b>BSAP CONSTITUTION AND RULES {for AGM approval} .....</b>	<b>139</b>
<b>AUSTRALIAN PHILATELY IN PRINT #4, 2020 .....</b>	<b>146</b>

## OFFICERS OF THE SOCIETY

### PRESIDENT

D.D. Speer FBSAP, The Mede. Luppitt, Honiton, Devon EX14 4RT

Tel: 01404892787 Email [dave.speer@hotmail.com](mailto:dave.speer@hotmail.com)

### HONORARY SECRETARY

Dr. P.G.E.Reid, 12 Holly Spring Lane. BRACKNELL, Berks. RG12 2JL

Tel. 01344867311 Email [pge.reid@gmail.com](mailto:pge.reid@gmail.com)

### HONORARY TREASURER, MEMBERSHIP SECRETARY and DATA CONTROLLER

Malcolm Price, 33 Manor Gardens, Hurstpierpoint, West Sussex, BN6 9UG

Tel: 01273 833963 Email: [bsapmjp@btinternet.com](mailto:bsapmjp@btinternet.com)

<b>AUCTION ORGANISER</b>	Huw Williams	8 Graham Road, Hampton, Middlesex, TW12 1AN	Tel. 0203 566 3837: Email <a href="mailto:huwie35@sky.com">huwie35@sky.com</a>
<b>PACKET SUPERINTENDENT</b>	Brian H Sullman	13 Vallance Place Cravells Road, HARPENDEN Herts. AL5 1AX	Tel. 01582 460317 Email <a href="mailto:bhsullman36@btinternet.com">bhsullman36@btinternet.com</a>
<b>LIBRARIAN (Periodicals)</b>	A.E.Coles	13 Lakeland Drive Frimley, CAMBERLEY Surrey GU16 8LD	Tel. 01276 25908 Email <a href="mailto:a.e.coles@ntlworld.com">a.e.coles@ntlworld.com</a>
<b>LIBRARIAN (Books)</b>	Tom. D. Gillespie	11 Brook Close BOGNOR REGIS West Sussex PO21 5PN	Tel. 01243 826478 Email <a href="mailto:Tomgillespie123@btinternet.com">Tomgillespie123@btinternet.com</a>
<b>PUBLICATIONS STOCKHOLDER</b>	Huw Williams	8 Graham Road, Hampton, Middlesex, TW12 1AN	Tel. 0203 566 3837: Email <a href="mailto:huwie35@sky.com">huwie35@sky.com</a>
<b>PROMOTIONS AND PUBLICITY OFFICER</b>	Ian Perry	29 Chetwynd Grove, NEWPORT, Shropshire, TF10 7JW	Tel: 01952 825941 Email: <a href="mailto:ianperrystamps@aol.com">ianperrystamps@aol.com</a>
<b>BSAP STAMP FORUM FORUM MASTER</b>	Dag Rohjell	<a href="http://www.bsap.org.uk/forum">www.bsap.org.uk/forum</a>	<a href="mailto:posttildag@hotmail.com">posttildag@hotmail.com</a>
<b>PROGRAMME SECRETARY</b>	C.V.Mount	151Aa Southampton Road, RINGWOOD, BH24 1HU.	Tel: 01425 474310 Email: <a href="mailto:cv.mount@googlemail.com">cv.mount@googlemail.com</a>
<b>WEBMASTER</b>	Dr. P.G.E.Reid	See details as Hon. Secretary above <a href="http://www.bsap.org.uk">www.bsap.org.uk</a> <a href="mailto:info@bsap.org.uk">info@bsap.org.uk</a>	See details as Hon. Secretary above
<b>SOCIETY WEBSITE</b>			
<b>SOCIETY EMAIL</b>			
<b>BULLETIN EDITOR (new)</b>	Alan Cross	7 Thrale Mews, Reading, RG30 2PD	Tel: 0114 2485653 (temporary) Email: <a href="mailto:ae.cross@outlook.com">ae.cross@outlook.com</a>
<b>(retiring)</b>	Graham Keates	37 Nashgrove Lane, Fochampstead. Wokingham, RG40 4HE	0118 9733129 Email: <a href="mailto:grahamkeates@gmail.com">grahamkeates@gmail.com</a>

### ADVERTISING RATES IN THE BULLETIN

POSITION	PER INSERTION		SIX INSERTIONS	
	FULL PAGE	HALF PAGE	FULL PAGE	HALF PAGE
<b>BACK COVER</b>	Not available	Not available	£300	Not available
<b>BACK COVER (INNER)</b>	Not available	Not available	£270	Not available
<b>FRONT COVER (INNER)</b>	Not available	Not available	£270	Not available
<b>INSIDE SHEET</b>	£55	£36	£216	£156

\* ALL ENQUIRIES AND COPY SHOULD BE SENT TO THE EDITOR  
 \* THE CONTENT OF AN ADVERTISEMENT MAY BE CHANGED FOR EACH ISSUE  
 \* DEALER INSERTS IN ISSUES CAN BE ARRANGED. CONTACT THE EDITOR FOR DETAILS

### MEMBERSHIP/SUBSCRIPTION RATES

Annual Subscription £30 UK. For overseas, rates vary according to postage requirements, see website membership form. A discount is offered for prompt payment on renewal. Electronic .pdf download copy only £19. Back Issues available from the Publications Stockholder at £5 UK. Overseas £6 (surface) or £7.50 (air) inclusive of postage. Cheques to be made payable to "BSAP". Electronic back numbers from 2010 are available from the Treasurer at £15 per year or £3 per issue. Electronic back numbers from 2010 are available. Please contact the Hon. Treasurer in first instance.

**DERBY OFFICE**

Cavendish House  
153-157 London Road  
Derby  
DE1 2SY



**LONDON OFFICE**

Suite G06  
Dowgate Hill House  
14-16 Dowgate Hill  
London, EC4R 2SU

Over 65 years' Service to Philately

September 9th & 10th 2020

Great Britain & Worldwide Stamps & Postal History Auction

Featuring fine, rare & unusual Australia & Australian States stamps and postal history.



LIVE ONLINE BIDDING  
in association with  
[easyLiveAuction.com](http://easyLiveAuction.com)

Search our catalogues on [PhilaSearch.com](http://PhilaSearch.com) and [StampAuctionNetwork.com](http://StampAuctionNetwork.com)  
Consignments welcome for our future sales. Please contact us for further information.

[www.cavendish-auctions.com](http://www.cavendish-auctions.com)

[stamps@cavendish-auctions.com](mailto:stamps@cavendish-auctions.com)

Derby - (44) 01332 250970

London - (44) 020 8785 7750

Fax. (44) 01332 294440

## **EDITOR'S INTRODUCTION, SECRETARY'S LETTER & NOTICES**

Graham & I hope you and your friends and family continue to keep well, and as appropriate begin some activities that may have been curtailed by lockdown. Graham asked me to consider being editor a while ago, and myself and another member who have an age beginning with a 5 (rather than a somewhat higher number, so common in philatelic societies, including BSAP) spoke to Patrick at Stampex last year to express a willingness to help in some way.

As Bulletin Editor is the job that currently needs doing, and one past president has written to me to say he sees the bulletin as the thing that "holds the society together" (particularly for those who can rarely get to meetings in London, when we could have them), I have agreed to do it. Graham & I have been talking handover by phone during lockdown (when I have been in Sheffield), but met in his garden during June for a "handover". His passing comment was that as the editor you make the decisions, so I have decided the editor's & secretary's updates will appear first. The articles will then appear with the note of articles elsewhere (from Albert) at the end. This bulletin also contains an updated (proposed) constitution, and that appears near the end as well. I have put a slightly fuller index on the cover to help.

As far as possible (as it depends upon the material submitted) I will mix longer and shorter articles, with a wide range of subjects. Whilst Graham has handed over sufficient material for the next couple of editions or so, a continued supply is necessary. If you are planning to prepare a longer article (that may need publishing in two or more parts), please let me know at the earliest date (i.e. when you start preparing it, even if you know it will take a few weeks/months to complete).

As many of you know, my specialist area is the Postage Dues of Australia (including Victoria & NSW), and I'll provide some short and occasional longer articles covering that in due course. I have started off this month with a review of the latest Brusden White Dues Catalogue.

Patrick advised last month that other than the planned AGM in October (subject to the then Covid restrictions), no physical London meetings are planned in the autumn. Those who are RPSL members may know that a successful series of Zoom meetings has occurred, and during the "after conversation" of a recent meeting it emerged several other societies (including the NZ Society) have successfully met that way. I am happy to look at organising a couple of informal autumn meetings that way if there is demand – drop me an e-mail, if you would like to be an attendee.

**Alan Cross – July 2020**

### **Membership Secretary List of Changes to Membership Database – Notification 171 Period: 1 May 2020 to 30 June 2020**

*New members:* 1858 Dr. M Cohen ACT, Australia

*Changes & Corrections of address, Lapsed & Removed Members, Deceased, Resigned & Reinstated:* None Advised

## OPEN LETTER FROM THE SECRETARY

Quite a change from the last letter. It is now possible to visit the pub and get a drink. Not that I have found the need to do so yet. It is still not entirely clear that we shall be able to hold the AGM as announced in my last letter, but you will find elsewhere in or with this issue the calling notice, a booking form (to manage the lunch catering) and the proposed revisions to the Rules of the Society. These changes have been endorsed by Council and are commended to you for approval.

As I am sure that most of you will know, Autumn Stampex has been cancelled. The PTS has mentioned doing virtual displays, but there is nothing yet published about this\*. At this stage it seems very likely that Spring Stampex in February will go ahead, but that presumes that we shall be “almost” back to normal – whatever that means now!

Council have agreed that we shall invest money in a revamp of our website. Dag Rohjell has stood down from maintaining it and the current look is rather dated – as is some of the information in it. The work will take a few months to complete and it will be thoroughly tested before going live. Watch this space for updates. I am also pleased that Huw Williams has agreed to maintain it.

This issue of the Bulletin is the first produced by our new Editor, Alan Cross. Graham Keates will oversee things, but he will have little involvement in further issues. We thank him for doing a sterling job over several years. Please support Alan by keeping up a steady supply of articles, both short and long. Short articles are a great friend to the Editor as they make wonderful “space-fillers”.

After some heart-searching, your Council agreed that all London meetings this year will be cancelled. The next London meeting will be in January 2021. We still have not managed to find a suitable venue for the Supper after a Christmas meeting. We may need to have some lateral thoughts about how to manage it in 2021.

A somewhat abbreviated Programme is published with this issue. Note that meetings that had been arranged have been marked **CANCELLED** in bold. Just so that you know what you have missed!

I look forward to seeing some of you - at least a quorum - at the AGM in October. Keep safe and well.

PGER 9/07/20

*\* The Editor observes that at [www.stampexinternational.co.uk](http://www.stampexinternational.co.uk) initial details of the virtual Stampex were beginning to appear (though all the dated entries appeared after the Patrick prepared his letter).*

## NOTICE OF ANNUAL GENERAL MEETING

The 2020 Annual General Meeting of the British Society of Australian Philately  
will take place at the Grasmere House Hotel, Salisbury  
on Wednesday 28<sup>th</sup> October 2020 at 11.00 am.

**P G E Reid, FRPSL, FBSAP**  
**Hon. Secretary**

### AGENDA

1. **Acceptance of the Minutes of the 2019 AGM previously circulated in The Bulletin (August 2019)**
2. **Matters arising from the minutes**
3. **President's Address**
4. **Report of the Hon. Secretary**
5. **Report of the Hon. Treasurer {Note – accounts were pg 86-89 of June Bulletin}**
6. **Report of the Exchange Packet Superintendent**
7. **Report of the Auction Organiser**
8. **Report of the Hon. Librarian**
9. **Report of the Bulletin Editor**
10. **Report of the Publicity Officer**
11. **Society Officers**
12. **Election to Council.**  
In accordance with Rule 4 the following members of Council offer themselves for re-election: Brian Sullman, Colin Mount.  
Graham Keates has decided to step down. Alan Cross is nominated to replace him both on Council and as Editor of the Bulletin.  
Any other nominations to the Hon. Secretary by 14<sup>th</sup> October 2020 please.
13. **Election of Hon. Examiner**
14. **The Society's Programme and The Bulletin**
15. **Any Other Business**

**Approval of Revised Constitution and Rules (in the light of the Covid-19 crisis).**  
*{see page 139 of this Bulletin}*

**Scanned Bulletin Memory Stick - progress.**

**Members should give notice in writing to the Hon. Secretary by 14<sup>th</sup> October 2020 of any other matters that they intend to raise.**

**P G E Reid Hon. Sec 16/6/20**

## 2292. CONTINUING RESEARCH ON THE GV 1D VARIETIES (Part 61)

by Gordon Monk, Bert Wajer and the late Paull Kaigg

*{Editors Note. As started in the June bulletin, the following article consists of the remaining updates to panes published earlier}*

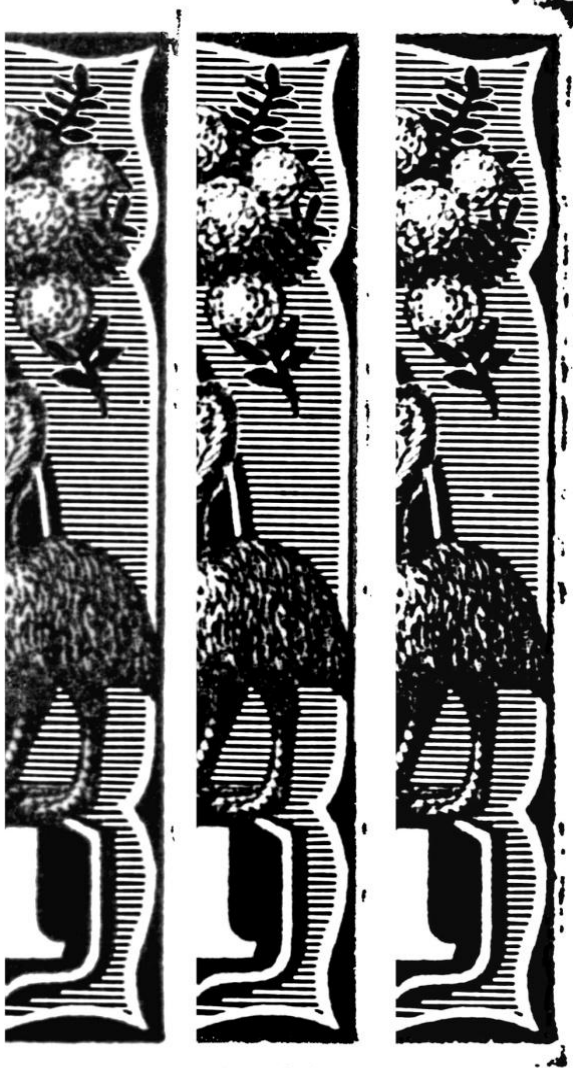
**Pane 4 # 16** Note: Issued (by the article authors) Sep 2011. Revised Feb 2020.

### 1<sup>st</sup> State 1914 - Final

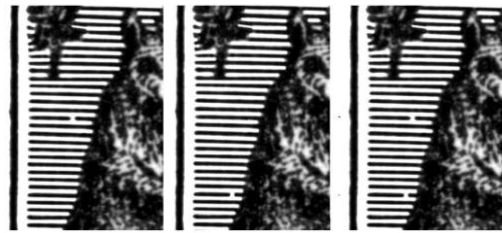
- 1a Left Frame. Extends downward causing the BF to appear to have a shallow hollow just right of BLC, found on 18% of sample.
- 1b Bottom Right Corner. Minute split in corner, found on 43% of sample. As the run progresses the corner gradually becomes bulbous, variable.
- 1c Right Frame. Early in the print run the top 1½mm is rough, found on 39% of sample. As the run progresses the roughness becomes inked in, variable.
- 1d Oval. Shade breaks in 6<sup>th</sup> to 8<sup>th</sup> lines from the bottom of oval by the King's neck, found on 27% of sample, variable.
- 1e Oval break in shade line opposite Emu's beak, found on 11% of sample.
- 1f Shade Lines. Break in 5<sup>th</sup> line under left wattle stem 1½mm from LF, found on 16% of sample.
- 1g Shade Lines. Break in 15<sup>th</sup> line under left wattle stem 1½mm from LF, found on 16% of sample.
- 1h Shade Lines. Break in 5<sup>th</sup> line from top, 1mm left of crown, found on 18% of sample.
- 1j Top Frame. Abrupt curve on inside left of right v-scroll, found on 25% of sample.
- 1k Shade Lines. Break in 3<sup>rd</sup> line above base of right wattle stem ½mm from RF, found on 23% of sample.
- 1m Shade Lines. Break in line at base of right wattle stem 1mm from RF, found on 16% of sample.
- 1n Shade Lines. Break in 10<sup>th</sup> line under base of right wattle stem 1½mm from RF, found on 32% of sample.
- 1p Top Frame. In mid print run a 2mm compartment mark appears 1mm above TF starting ½mm from LF and as the run progresses it grows in length to 5½mm, inconstant and variable.
- 1r Top Right Corner. Compartment marks appear in mid print run 1mm above TF ½mm from RF and as the run progresses it extends for 1½ mm over TF, inconstant and variable.
- 1s Right Frame. In mid print run compartment marks appear at R41 and R47. Later more marks appear at R4-9, R20-51, R58-59, R64-73 and R99-R114, inconstant and variable.
- 1t Bottom Right Corner. In mid print run a compartment dot appears ½mm from RF and ½mm below BF. Later it grows to from an angle around the corner, inconstant and variable.



Pane 4 # 16 (cont.)



1s variations



1f

1g

1f, g



1e



1h



1j



1t variations



1k, m

1n

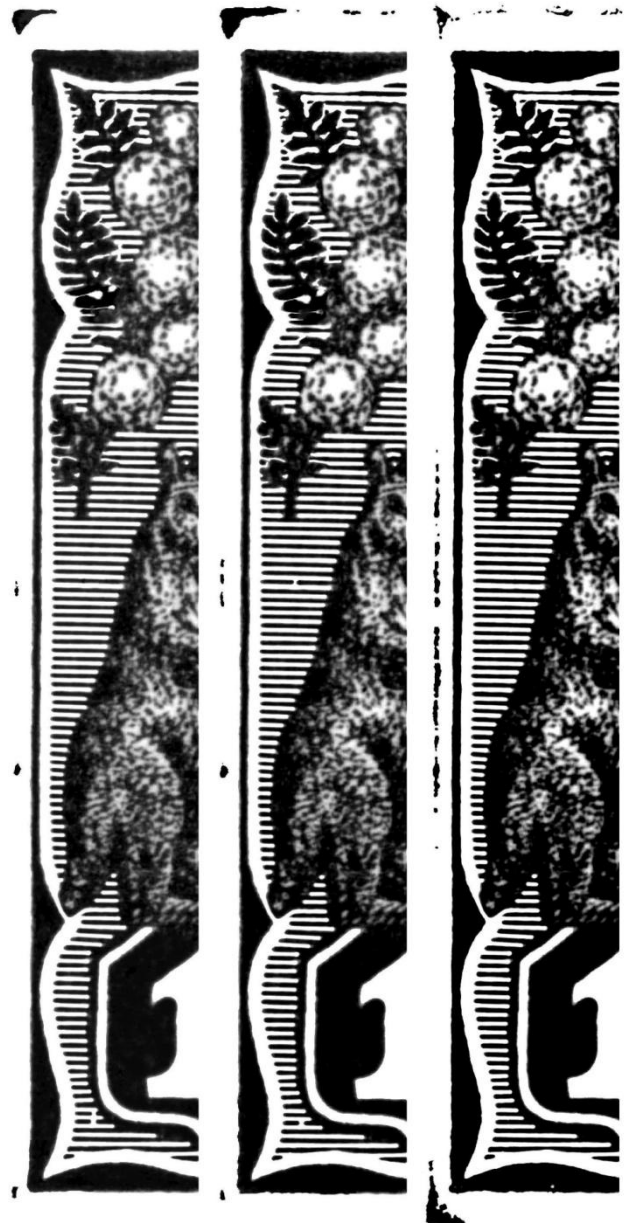


1p, r variations

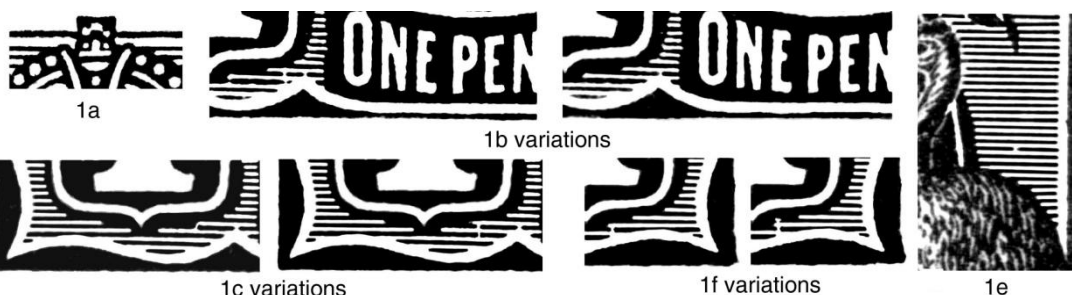


**1st State 1914 – Final**

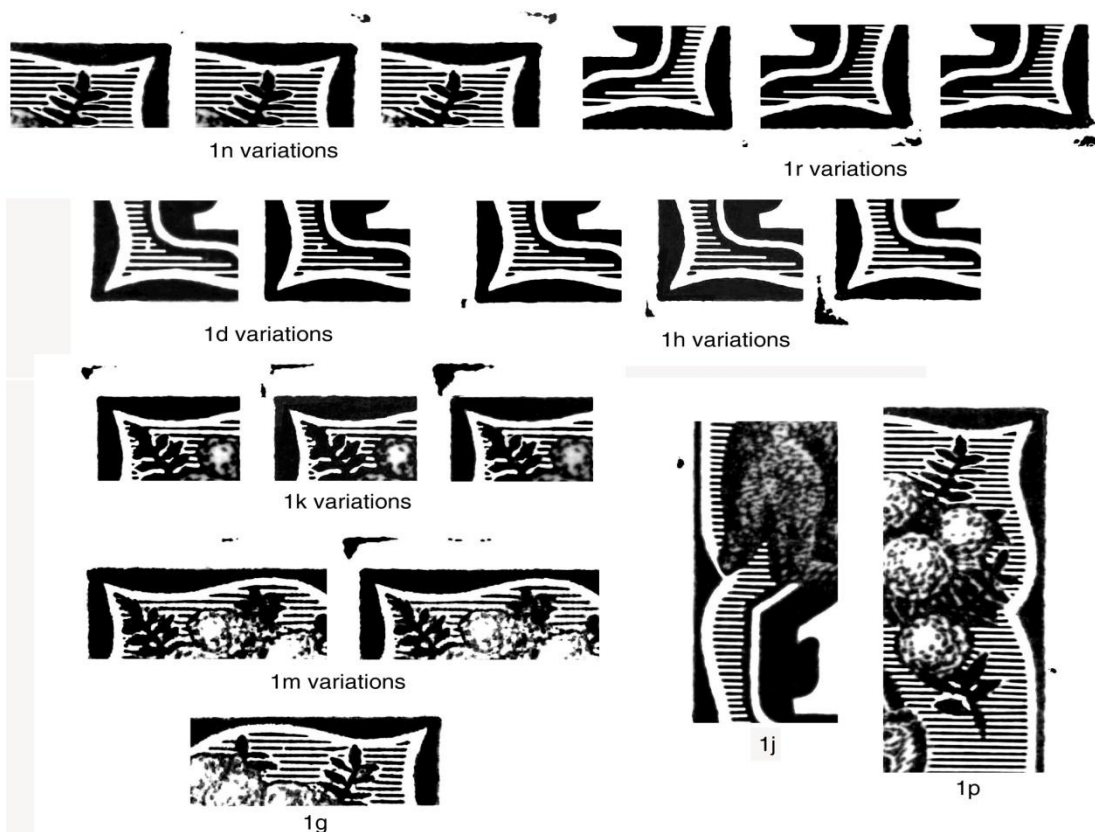
- 1a Cross. Top dished found on 72% of sample, variable.
- 1b Bottom Frame. Slightly thinned under ONE, found on 35% of sample.
- 1c Shade Lines. Break in 3<sup>rd</sup> and 4<sup>th</sup> lines from bottom 5¼mm from LF, found on 24% of sample, variable.
- 1d Shade Lines. Break in 5<sup>th</sup> and 6<sup>th</sup> lines left of LVS, found on 28% of sample.
- 1e Shade Lines. Break in 3<sup>rd</sup> clear line over Emu's back 1½mm from RF, found on 48% of sample.
- 1f Shade Lines. Break in 2<sup>nd</sup> line from bottom 3¼mm from RF, found on 52% of sample.
- 1g Shade Lines. Break in 3<sup>rd</sup> line from top 4mm from RF, found on 24% of sample.
- 1h Bottom Left Corner. A compartment dot appears off the corner in mid print run and then grows to form an L shape around the corner, variable.
- 1j Left Frame. An identification compartment dot appears in mid print run at L78. Later in the run more marks appear between L44 and L90, variable.
- 1k Top Left Corner. In mid print run a compartment mark appear off the corner and later grows to form an angle around the corner, variable.
- 1m Top Frame. Late in the print run compartment marks appear ¾mm above TF and 3½mm from TLC, variable.
- 1n Top Right Corner. A compartment dot appears off the corner early in the print run 1mm above TF and ½mm from RF. As the run progresses it extends downward to ½mm above TF and ¼mm from RF, variable.
- 1p Right Frame. Late in the print run a compartment mark appears at R37-38.
- 1r Bottom Right Corner. A compartment dot appears off the corner in mid print run and then grows to form a reverse L shape around the corner, variable.



1h, j, k variations



**Pane 4 # 17 cont.**



**Pane 4 # 18** *Note : Issued Nov 2005 Revised Mar 2020*

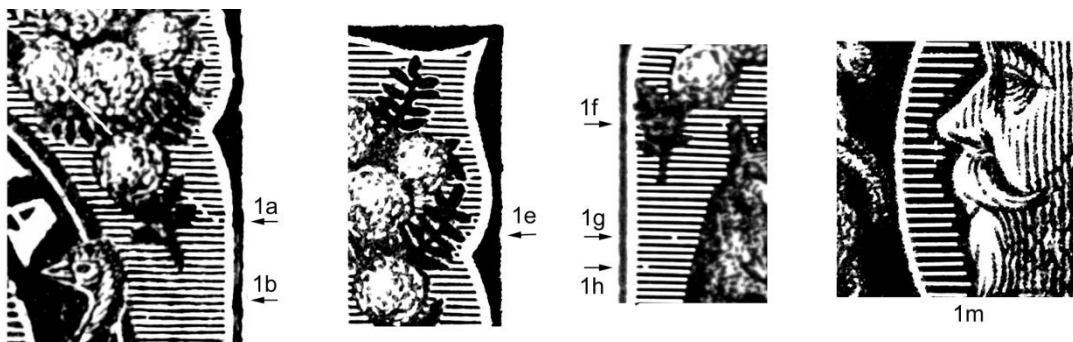
1<sup>st</sup> State 1914 – Final

- 1a Right Wattles. A scratch starting in the middle of the fifth bloom and running down through the seventh bloom and finishing between the last two leaves right of the wattle stem, found on 23% of sample.
- 1b Shade Lines. An almost straight line of notched shade lines from the last A of AUSTRALIA to five lines below the right wattle stem, found on 18% of sample.
- 1c Top Frame. Two small notches in TF just to the right of TRC, found on 13% of sample.
- 1d Oval. Minute dent in oval under the second A of AUSTRALIA, found on 20% of sample.
- 1e Right Frame. Small notch in frame 5¼mm below TRC, found on 40% of sample.
- 1f Shade Lines. Break in 9<sup>th</sup> line above base of L wattle stem left of Roo's ear, found on 13% of sample.
- 1g Shade Lines. Break in 7<sup>th</sup> line under left wattle stem 1½mm from LF, found on 10% of sample.
- 1h Shade Lines. Break in 11<sup>th</sup> line under left wattle stem ¾mm from LF, found on 25% of sample.
- 1j Bottom Frame. Slightly dished upwards just right of BLC, found on 25% of sample.
- 1k Top Frame. Notched on inside left of cross, found on 55% of sample.

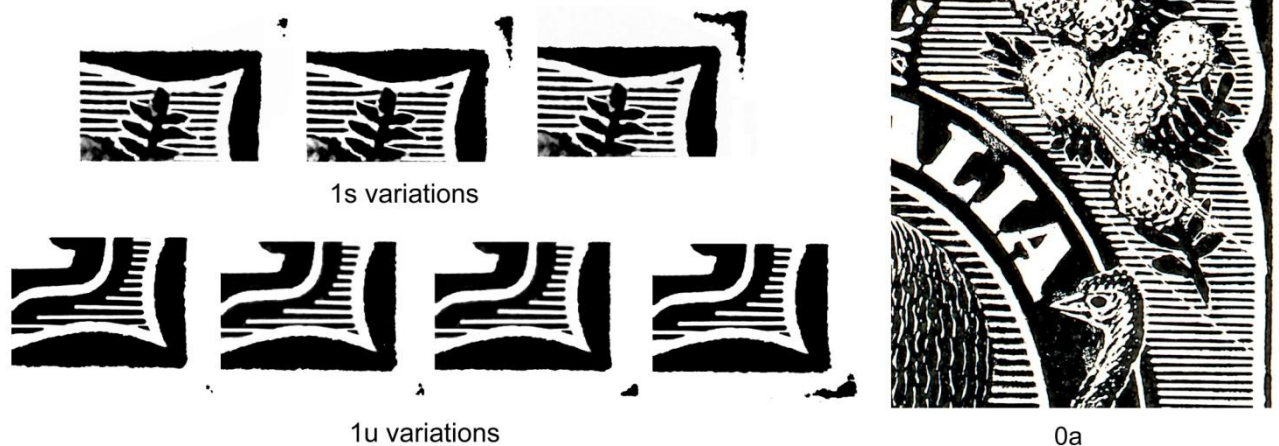
**4 # 18 (cont.)**

- 1m Oval. Short vertical scratch immediately under King's nose, found on 18% of sample.
- 1n Bottom Frame. Rough for 6mm from BRC, found on 23% of sample.
- 1p Bottom Left Corner. In mid print run a compartment dot appears the corner. Later a 2<sup>nd</sup> dot appears and then it grows to a short vertical line, variable.
- 1r Top Left Corner. In mid print run a compartment dot appears above the corner. Later more marks appear until it forms an angle around the corner, variable.
- 1s Top Right Corner. In mid print run a compartment dot appears above the corner. Later more marks appear until it forms an angle around the corner, variable.
- 1t Right Frame. Early in the print run a compartment mark appear at R48-49. As the run progresses more marks appear until they go from TRC to BRC, variable.
- 1u Bottom Right Corner. Early in the print run a compartment dot appears off the corner. As the run progresses more marks appear until it forms an angle around the corner, variable.

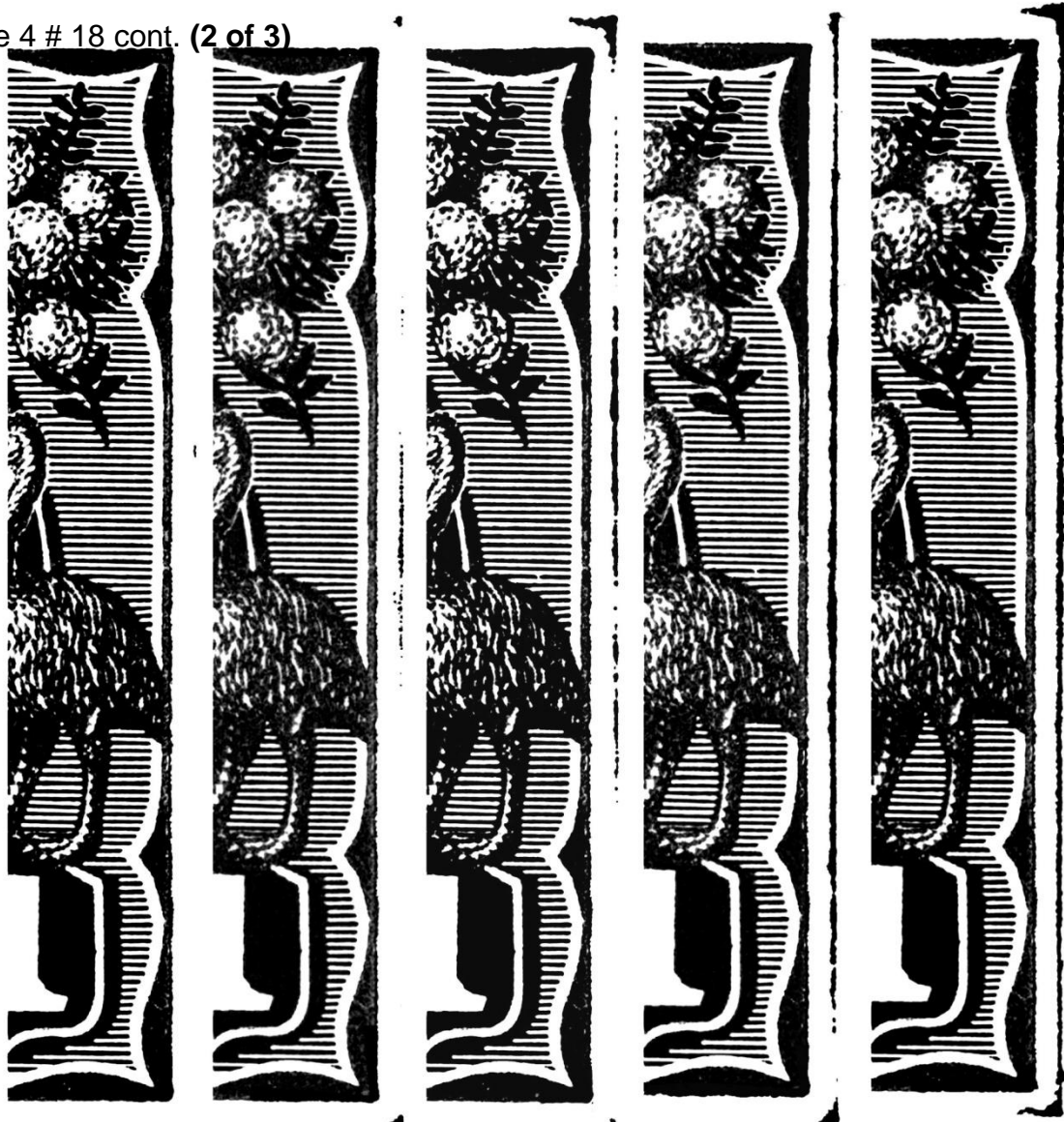
Note This is a right margin unit. 1a & 1b could be the retouch of Plate Proof flaw 0a.



*Editors Note 1c etc. Illustrated on next page*



Pane 4 # 18 cont. (2 of 3)



1s, t, u variations



1c variations

1j

1d



1n

1p variations

1k



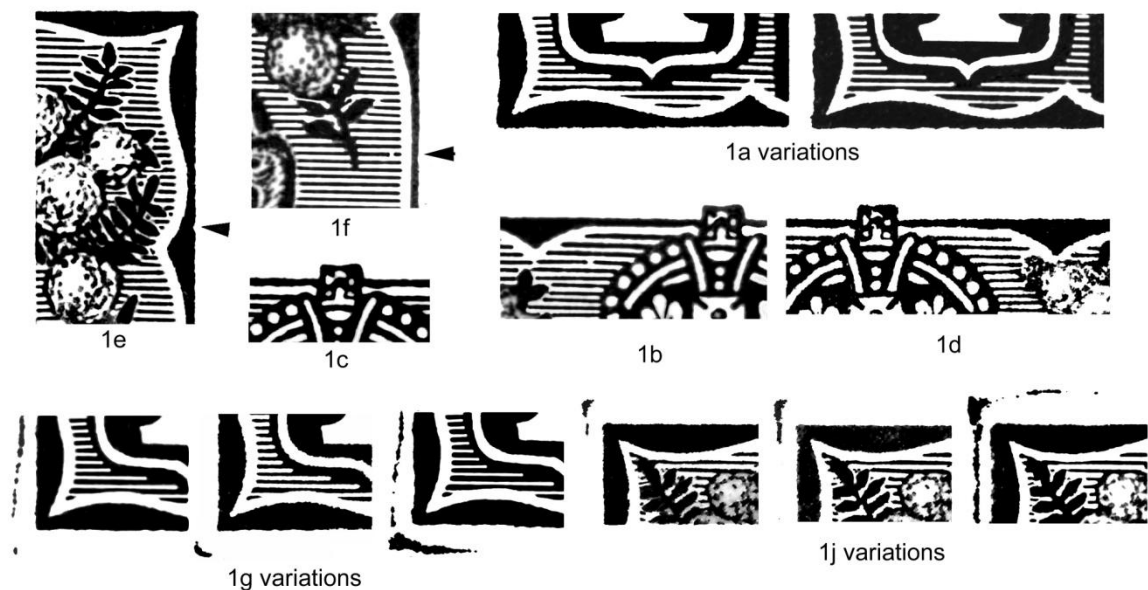
1r variations

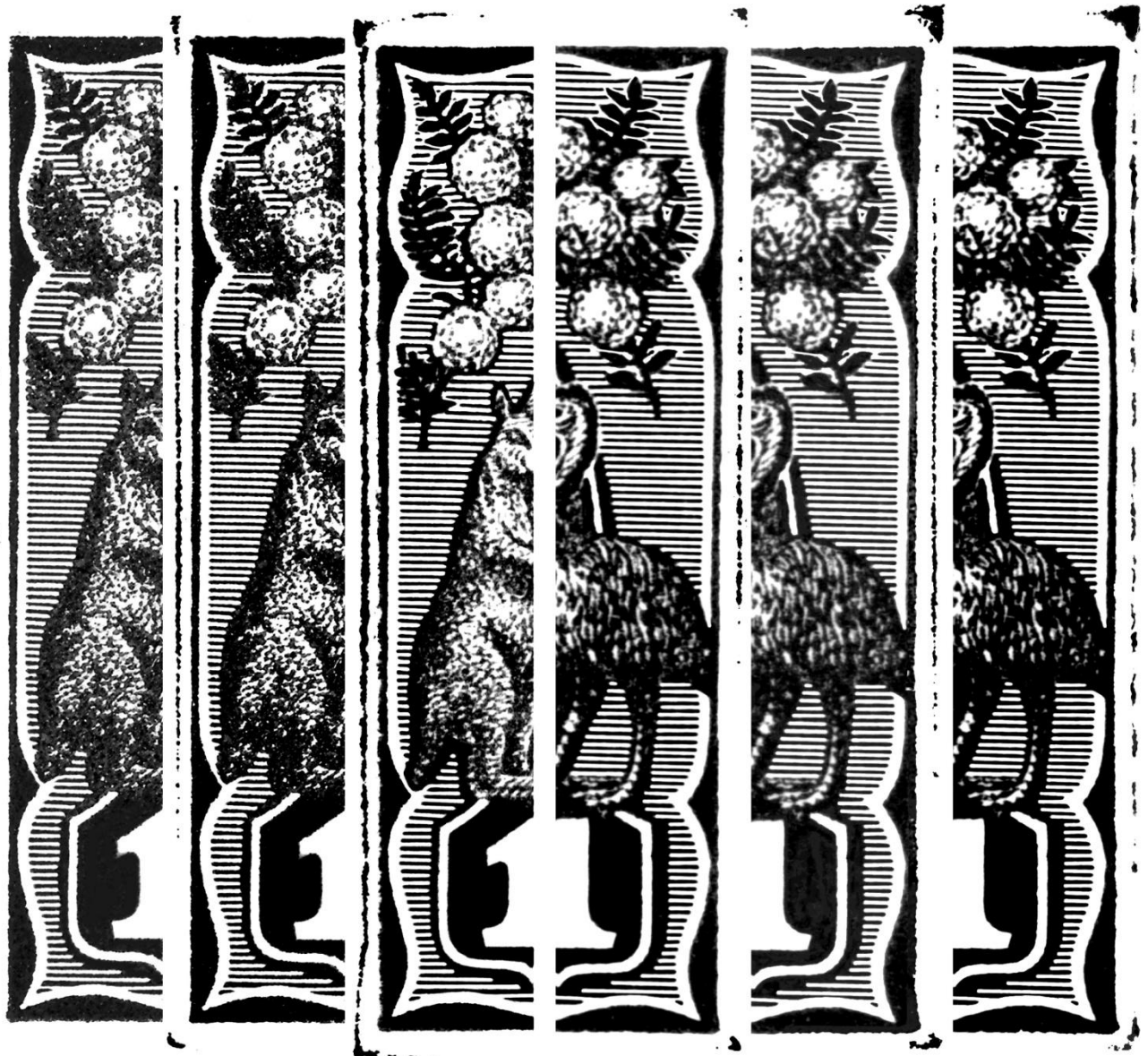
**Pane 4 # 19** Note : Issued Dec 2005 Revised Apr 2020

1<sup>st</sup> State 1914 – Final

- 1a Left Value Shield. White spur projecting into the ground of the Shield, below and to the right of the heel of the numeral, 5½mm from LF, found on 33% of sample, variable.
- 1b Shade Lines. Break in 4<sup>th</sup> line from top and 1mm left of crown, found on 21% of sample, variable.
- 1c Cross. Top dimpled, found on 38% of sample, variable.
- 1d Top Frame. An abrupt curve on the inner edge of frame right of cross, found on 46% of sample, variable.
- 1e Right Frame. A small notch in frame 5¼mm from TRC, found on 29% of sample, variable.
- 1f Shade Lines. Break in 3<sup>rd</sup> line above base of right wattle stem ½mm from RF, found on 25% of sample, variable.
- 1g Bottom Left Corner. In mid print run a compartment dot appears ½mm below BF and ½mm from LF. Later more marks appear until they form an angle around the corner, variable.
- 1h Left Frame. In mid print run compartment marks appear between L37-L45 and L64-L66. As the run progresses more marks appear until they go from TLC to BLC, variable.
- 1j Top Left Corner. In mid print run a compartment mark appears ½mm above TF and ½mm from LF and extending down the LF. Later more marks appear until they form an angle around the corner, variable.
- 1k Top Right Corner. In mid print run a compartment mark appears ⅓mm from RF and 1mm from TF. Later it grows to form an angle around the corner, variable.
- 1m Right Frame. In mid print run compartment marks appear between R26-R80. Later more marks appear until they go from TRC to R108, variable.
- 1n Bottom Right Corner. In mid print run a compartment mark appears ⅓mm below BF and ½mm from RF. Later it grows to form an angle around the corner, variable.

Note - This is a left margin unit. More information is needed on the formation of the compartment marks. Compartment marks are rare in green printings.





1g, h, j variations

1k, m, n variations



1k Variations

1n variations

**Pane 4 # 20** A difficult unit to plate

*Note : Issued Dec 2005 Revised July 2017; Completely Revised Apr 2020.*

Pane 4 # 20

1<sup>st</sup> State 1914 – Final

- 1a Top Left Corner. Extends slightly upwards with LF shaved into corner from ½mm below, found on 62% of sample.
- 1b Cross. Gentle left to right slope, found on 28% of sample. Variable.
- 1c Top Frame. Abrupt curve on inside, left of right v-scroll, found on 35% of sample. Variable.
- 1d Left Frame. Rough for 5mm above BLC, found on 31% of sample. Variable.
- 1e Top Frame. Late in the print run compartment dots appear at ½-2½mm, 5-5½mm from TLC, 6-7mm from TRC and over TRC, inconstant.
- 1f Top Right Corner. Very late in the print run a ½mm long compartment mark appears ½mm from RF and ½mm above TF, inconstant.
- 1g Right Frame. Very late in the print run compartment marks appear between R19 and R85, inconstant.
- 1h Bottom Right Corner. Late in the print run a compartment dot appears off the corner and later grows to a short horizontal line, variable.

Note More information required on the development of the compartment marks.



1a variations

1f

1f, g, h



1a, b, e



1d variations

1b, c

1b

## 2641. RESEARCH ON AUSTRALIAN RAILWAY LUGGAGE AND PARCEL LABELS Part 8 by Ian Spencer (999)

Part Q continued: Tasmanian Passenger's Luggage and Parcel Labels

*Editor's Note - This section is a continuation of the Part Q (which began last time). It is planned the concluding continuation will appear next time.*

The findings are preliminary finding, based on what has been seen to date, and as advised at the beginning of the article, they can be split into five main categories for passenger's luggage labels

- (1) Those headed "Govt. Railways of Tasmania"
- (2) Those headed "Transport Department"
- (3) These headed "Transport Commission"
- (4) Later ones with "Australian National Railways"
- (5) Large "Tourist" Labels

*(Illustrations are shown at reduced sizes)*

### Type Q13



### Type Q14



### **Type Q13**

Size 108 x 69.5 mm. This type is unusual in having the station name (7mm high) in the middle and "Passenger's Luggage" at the base, with thick 14 mm lines with both words between them. It is the only one of the C51 types to have a quantity (10M – 10,000 printed). Bridgewater has damage to the letter "T" in two places in the name.

#### Stations Recorded

Leith – "40702(10M)-C51"

Bridgewater – "40702(10M)-C51 at lower left"

Again these are likely to have been part of the same order.

### **Type Q 14**

Size 108 x 69 mm. Characterised by having the station in the middle, with thick 14 mm lines above and below it

#### Station Recorded

Conanara "46063-C51"

Part (2C) – Order number only (at lower left)



### Type Q15



### Type Q16



### Type Q15

Size 107.5 x 69 mm. Very similar to Type Q1, but this has an order number only at lower left. "Transport Department" is in sans-serif letters (78 x 3 mm), with square stop. "(Railway Branch)" is in the same font, but smaller (35.5 x 2 mm), again, with a square stop. "Passenger's Luggage" (74.5 x 4.5mm) is in a seriffed font, with thin 12 mm lines above and below it. Station name (11.5mm high) is in a thick seriffed font – different from the line above.

#### Station Recorded

Penguin – larger order number "80196".

### Type Q16

Size 106.5 x 68.5 mm. "Transport Department" is in sans-serif letters (62 x 3 mm), without stop. "(Railway Branch)" is in the same font, but smaller (34 x 2 mm), again, without stop. "Passenger's Luggage" (74.5 x 4.5mm) is in a seriffed font, with thin 16.5 mm lines above and below it. Station name (10mm high) is in a thinner sans-serif font.

#### Stations Recorded

Claremont – small order number "7995"

Glenorchy – small order number "7995" (ANRM collection) – same order number

### Type Q17



### Type Q18



### **Type Q17**

Size 109 x 69.5 mm. “Transport Department” is in a thinner sans-serif font, with more rounded letters (72.5 x 3 mm), no stop. “(Railway Branch)” is in the same font, but smaller (40 x 2 mm), again, without stop. “Passenger’s Luggage” (78.5 x 4.5mm) is in a seriffed font, with thin 15.5 mm lines above and below it. Station name (12.5mm high) is in a thick font with small serifs– in upper and lower case letters – similar that of the station names for Types Q5 and Q20.

#### Station Recorded

Deloraine –small order number “96423”

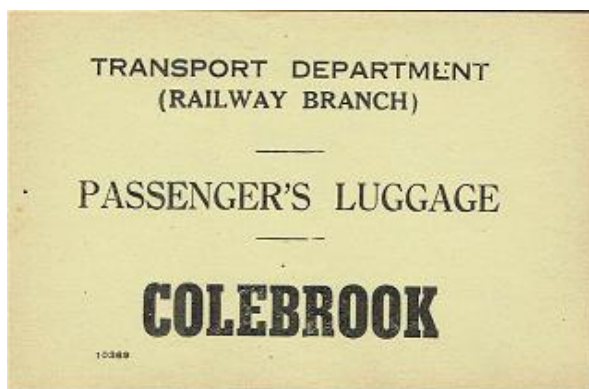
### **Type Q18**

Size 108 x 69 mm. Similar to Type Q17, but the thin lines above and below “Passenger’s Luggage” are very long (29 mm). There is a larger (mm) gap between the top two lines. Station name (9 mm high) is in a thick seriffed font with very thin, oval letter “O”s –

#### Station Recorded

Longford – small order number “1273”

### **Type Q19**



### **Type Q20**



### **Type Q19**

Size 108 x 69.5 mm. “Transport Department” is in sans-serif letters (72.5 x 3 mm) -note the broken “E” in “Department”. “(Railway Branch)” is in a different font with small serifs, but smaller (47 x 3 mm), “Passenger’s Luggage” (77.5 x 4.5mm) is in a seriffed font, with thin 12.5 mm lines above and below it. Station name (9 mm high) is in a thick serrified font.

#### Stations Recorded

Colebrook – small order number 10369

Bridgewater – small order number 10369

Granton– small order number 10369

Unusually, these stations all have the same order number.

### **Type Q20**

Size 107 x 69.5 mm. Similar to Type Q16, but the station name is 12.5 mm high and in upper and lower case letters. Lines above and below “Passenger’s Luggage” is slightly thicker than in Type Q16 and longer at 15 mm.

Stations Recorded  
Kimberley -“96423”

**Type Q21**



**Type Q22**



**Type Q21**

Size 107 x 69 mm. Pale pink paper. “Transport Department” is in sans-serif letters (64.5 x 3 mm) “(Railway Branch)” is in the same font with small serifs, but with upper and lower case letters (47 x 3 mm), “Passenger’s Luggage” (73 x 4.5mm) is in a seriffed font with letters closer together, with thicker 11 mm lines above and below it. Station name (9 mm high) is in a thick serrified font, like that of Q15.

Station Recorded

Derwent Park (pale dusky pink paper) – small order number 5974

**Type Q22**

Size 109 x 70 mm. Top two lines are in the same seriffed font, and unusually are of the same height. “Transport Department” is 61 x 3 mm and “(Railway Branch)” is 46.5 x 3 mm, “Passenger’s Luggage” (76.5 x 4.5mm) is in a seriffed font, with thin 21 mm lines above and below it. Station name (12 mm high) is in a thick, sans-serif font

Stations Recorded

Longford - small order number 99551.  
Bridgewater – large order number 80593

**Type Q23**



**Type Q24**



### **Type Q23**

Size 108 x 72 mm. Unusually the station name (9 mm high) is placed centrally in a thick, sans-serif font. Top two lines are in the same sans-serif font, -“Transport Department” is 72.5 x 3 mm and “(Railway Branch)” is 40 x 2 mm, “Passenger’s Luggage” (76.5 x 4.5mm) is in a seriffed font, with thin 11.5 mm lines above and below it at the base of the label.

#### Station Recorded

Campbell Town – small order number 38476

### **Type Q24**

Size 109 x 71 mm. For use to smaller stations or depots that would not receive much traffic. Top two lines are in the same seriffed font. “Transport Department” is 75.5 x 3 mm and “(Railway Branch)” is 41.5 x 2 mm. The space for the station name is placed centrally with thick 16 mm lines above and below it. “Passenger’s Luggage” (76.5 x 4.5mm) is at the base in a seriffed font,

#### Station Recorded

Un-named - small order number 3565034 (only small order number with 7 digits)

### **Type Q25**



### **Type Q26**



### **Type Q25**

Size 108 x 68 mm. Known only from the PA collection. This has “Transport Department” (61.5 mm long) and “Railway Branch” (46.5 mm long) in the same seriffed font, and unusually, these lines are of the same height (3 mm). Very long (21 mm), thin lines above & below “Passenger’s Luggage. Station name is 13 mm high, and this is upper and lower case sans-serif letters.

#### Station Recorded

Westbury (pale beige paper) - small control number “99551”.

### **Type Q26**

Size 107 x 71 mm. Similar to Type Q10 (C51) type. “Transport Department” is in sans-serif letters (76 x 3 mm), with no stop. “(Railway Branch)” is in the same font, but smaller (4 x 2 mm), again, with thicker brackets. “Passenger’s Luggage” (76.5 x 4.5mm) is in a seriffed

font, with thin 11.5 mm lines above and below it. Station name (9 mm high) is in a thick seriffed font – different from the line above

Stations Recorded

Deloraine (beige paper) – large order number 3585094

Ulverstone (cream paper – 69 mm high. Large order number 35636

Westbury (cream paper) – large order number 356094

**A Type Q27**



**Type Q27**

Size 107 x 71 mm. Very similar to Type Q21 (C51), but with no station name at the base. “Transport Department” is in sans-serif letters (76 x 3 mm), with no stop. “(Railway Branch)” is in the same font, but smaller (46 x 2 mm), again, with thicker brackets. “Passenger’s Luggage” (76.5 x 4.5mm) is in a seriffed font, with thin 11.5 mm lines above and below it, unlike type Q20, the other type for un-named stations, where the lines straddle the space for adding the station.

Station Recorded

Un-named (space at base for a station to be added) - large order number 3565140.

**Part (2D) No Printed Information at Lower Left**

**Q28**



**Q28 Damaged Text**



**Type Q28**

Sizes 100-105 x 62.5-63.5 mm. Four examples have been recorded with a new taller type of sans-serif “Transport Department” at the top –all on different papers. This measures 76 x 3.5 mm. (Note the damage to the top of the Deloraine copy above). ”(Railway Branch)” is 40 x 2

mm, and is in a different font, based on the shape of the letter “R”. “Passenger’s Luggage” (76.5 x 4.5mm) is in a seriffed font, with thick 14 mm lines above and below it. Station names are 9mm high, with letters with small serifs

#### Stations Recorded

Somerset (pale blue paper) Size 100 x 62.5 mm  
Deloraine (pale yellow paper) Size 105 x 66 mm  
Deloraine (orange yellow paper) Size 105 x 64 mm  
Granton (pale blue paper) Size 103 x 61 mm  
Penguin (white paper) Size 108 x 60 mm.  
Penguin (pale pink paper) Size 104.5x 61 mm.  
Railton (white paper) Size 103 x 62 mm  
Ulverstone (very pale yellow paper) Size 103 x 63 mm

#### Type Q29



#### Type Q30



#### **Type Q29**

Again the sizes vary (104-108 x 60-75 mm). “Transport Department” is sans-serif and measures 73 x 3mm. “(Railway Branch)” is 45 x 2 mm, and is in the same font, “Passenger’s Luggage” (77.5 x 4.5mm) is in a seriffed font, with medium 12 mm lines above and below it. Station names are 9mm high, with letters with small serifs

#### Stations Recorded

Western Jcn. (white paper) Size 104 x 75 mm.  
Penguin (white paper) Size 108 x 63 mm.  
Granton (white paper) Size 104 x 60 mm  
Derwent Park (pale yellow paper) Size 104 x 66.5 mm.  
Derwent Park (white paper) – (ANRM)

#### **Type Q30**

Size 108 x 72 mm. This may be a printing variant of type Q24 (all text is the same), but the text is centred much lower down and has a thin line above it.

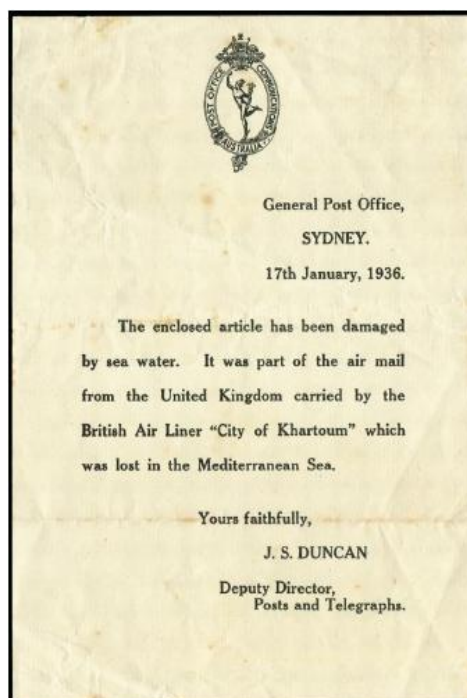
#### Station Recorded

Derwent Park

**2675. CITY OF KHARTOUM FLYING BOAT RUNS OUT OF FUEL; ONLY PILOT SURVIVES Part 3 by Brian Peace FRPSL (395)**

*Editors Note: As previously advised this article has been reformatted, and in part re-typed, as it was originally published elsewhere. It is apparent that the text accompanying the illustrations previously printed on page 104 (at the end of Part 2) was omitted, so I have reproduced, reducing the size of the PO Notice somewhat.*

This cover from Vienna was accompanied by the printed letter (reduced!) from the Sydney GPO dated 17 January 1936. Salvaged mail addressed to Sydney accompanied by the printed letter is not uncommon. Apparently recipients held on to the envelope and letter as a curiosity.

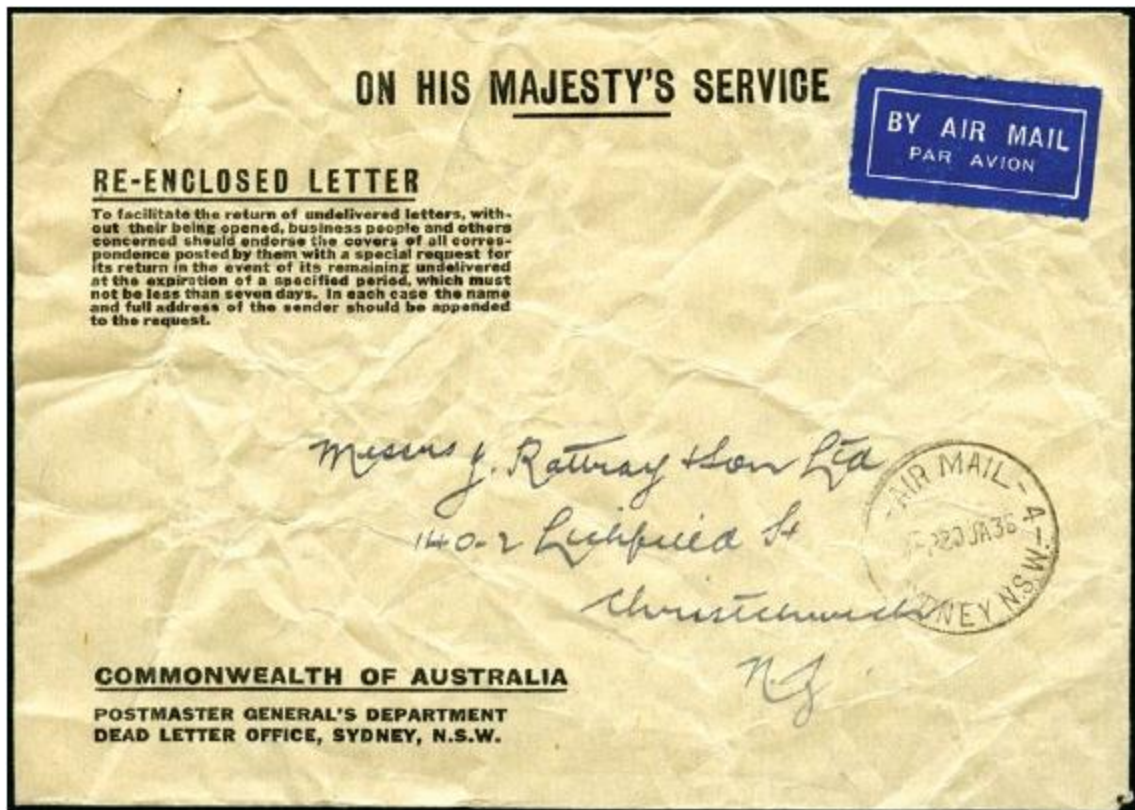


The next two illustrations are of Ambulance Envelopes issued on mail to New Zealand



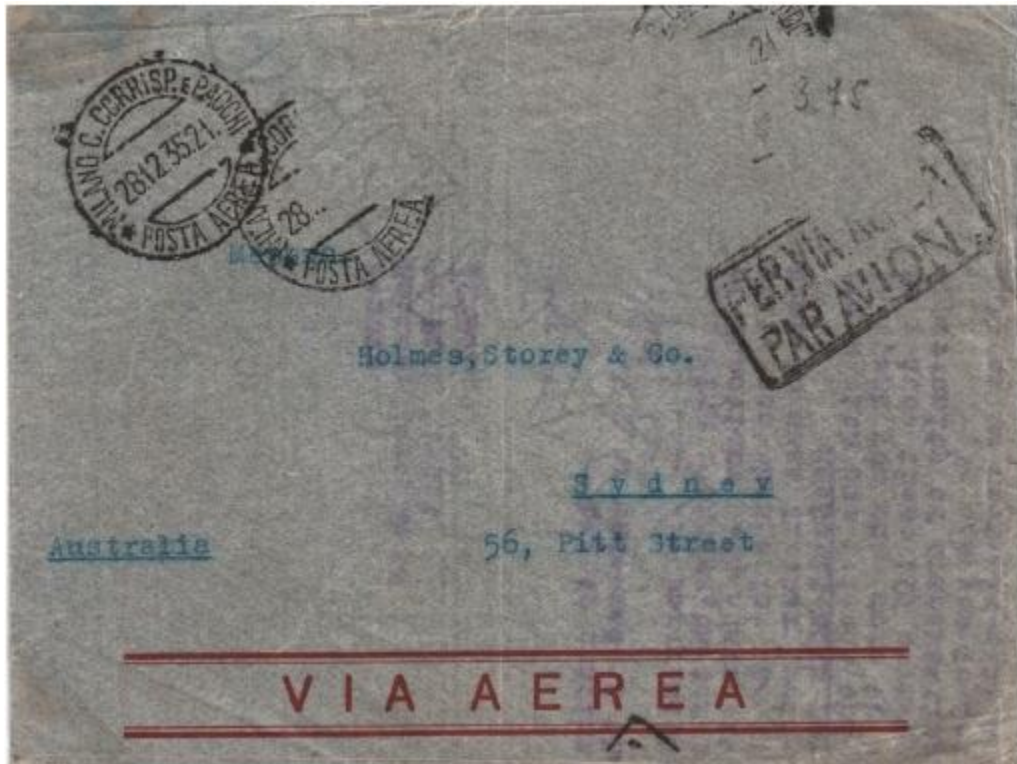
Printed Letter Size 127 x 178mm

Ambulance Envelope on mail to NZ – Sydney Date Stamp 5-P20JA36. Subsequently forwarded (twice) within NZ.



Similar Ambulance Envelope with same handstamp.





The above letter from Milan cancelled 28-12-35 was sent to Melbourne (5-P 19JA35), treated there, and re-despatched to Sydney, where it received the arrival date-stamp (3P20JA36). In view of the inevitable chaos caused by the crash, and loss of a proportion of the mail, it is unsurprising that some mail was not routed directly to the most appropriate centre for treatment.



**FOUND OPEN** Label, cancelled MELBOURNE 5-P 19JA35 and SYDNEY 3P20JA36.



Mail Processed at Adelaide GPO  
*The Mail (Adelaide) 18 Jan p2*

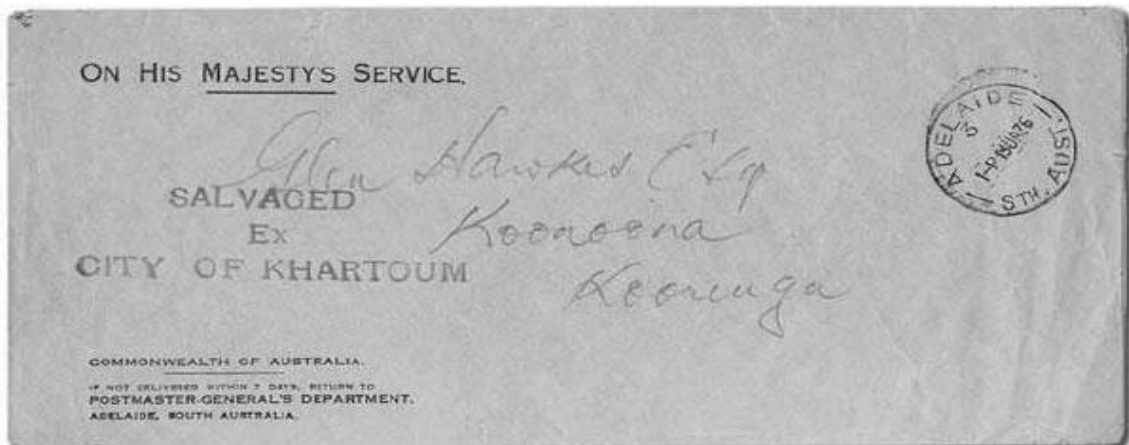


**THE ENGLISH AIR MAIL**, salvaged from the Mediterranean after the air liner *City of Khartoum* crashed off Alexandria on New Year's Eve, was still damp when it reached Adelaide today. These pictures, taken at the G.P.O., show (above) re-addressing the letters, and (left) ironing letters out before delivery.

Salvaged mail for South Australia, contained in one bag was re-despatched from Darwin to Melbourne with Capt Lester Brain on board the DH86 *Brisbane*. This

was transferred to CA Butler's aircraft at Charleville on the 16<sup>th</sup> and flown to Cootamundra, NSW, where it was transferred to the Sydney Express train heading for Melbourne.

Having arrived at Melbourne GPO about noon on the 17<sup>th</sup> the South Australia bag, containing about 300 letters was immediately forwarded to Adelaide, and arrived at the GPO on the morning of Saturday 18 January 1936. An elaborate and ingenious arrangement of electric drying apparatus was erected on the roof of the Post Office building by engineers. This consisted of four radiators and eight radiant lamps, together with electric fans which blew heat onto the letters.



Ambulance Envelope, used for the following letter. Cancelled **ADELAIDE 1-P 19JA36**. Bearing cachet in purple.



### Mail Processed at Perth GPO

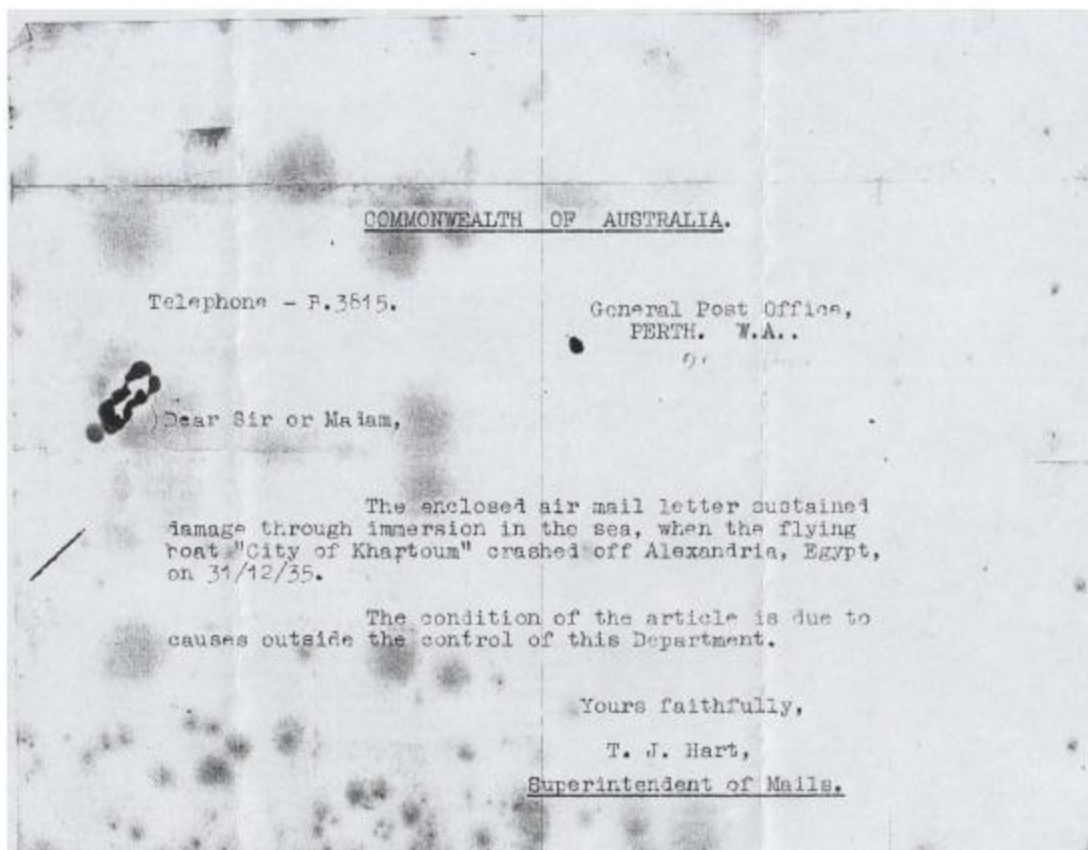
About 300 sodden air mail letters and packets reached Perth on Saturday 18 January. The letters, which were brought to Perth by the MacRobertson-Miller North-West mail service from Daly Waters, consisted of several bundles, some large packets, and a small bag of registered mail. They had been re-bagged at Alexandria, but when the bag was opened in Perth, the letters appeared so sodden that, for fear of further damage, the bag was cut away from them.

The mail was then revealed as several bundles resting in a thick layer of sodden fragments rubbed from the envelopes, detached stamps, and even disintegrated envelopes. Handling the wet papers carefully, the officials found that most of the addresses on the ordinary letters were legible, and they had little difficulty in the delivery of them. Bigger packets were in worse condition, and in some cases all trace of the addresses had been rubbed off, and the envelopes and their contents had been badly damaged.

Mr T Hart, the Superintendent of Mails, stated on 20 January

*“... whilst the salvaged Perth bag contained the worst damaged mail I have ever handled, only one or two packets were so damaged that the addresses were undecipherable, and the only inconvenience caused to my department was by the stamps peeling from the envelopes. No artificial means of drying was employed for the soaked letters. They were spread on blotting paper over tables and frequently turned. Large packets were placed on upturned wire baskets to allow the air to circulate freely around them. Even carbon copies of letters in the mail were unspoiled. The greatest difficulty was drying them sufficiently to take the date stamp, without which the covers would be worthless from a philatelic point of view”*

Almost all the letters were delivered on Monday 20 January, usually with an explanatory duplicated letter as illustrated below.



Duplicated letter from the GPO Perth dated 20 January 1936: size 210 x 165mm

**Salvaged  
Letter Reaches  
Port Lincoln**

Miss Margaret Aird, of Port Lincoln, this week received a letter that left England in the Imperial Airways liner City of Khartoum, which crashed in the Mediterranean early this month. With other mail, this letter was salvaged and brought to Australia in another plane. Although the letter was placed in another envelope at the G.P.O., Adelaide, the address on the original envelope, despite the immersion in the sea, was readable. The stamps, however, had been washed off.

Port Lincoln Times  
24 Jan p1



Congealed mail at Melbourne GPO 17 Jan  
The Age 18 Jan p15

*(Editor's Note – The final section about mail for further overseas will follow next timetogether with the full article bibliography. Would any member like me to similarly "tidy up" the mis-presented sections of Part 2 – if there is demand I will do and e-mail to those members who request it)*

**ANNEX TO PREVIOUS ARTICLE – REQUEST FOR CRASH COVERS: SCIPIO, CYGNUS, ATHENA, BOADICEA, CALPURNIA, KORANGA – Brian Peace (395)**

Most readers will know that Brian Peace FRPSL, Chairman of BSAP Council has written several books including two recent volumes on Crash Mail. He is now working on Volume 3 and asks If any BSAP members have covers to or from Australasia from these incidents. If you do, Brian would appreciate scans (both sides (and I would presume any original contents) please) for Volume 3 of his Crash Mail series. Send to brpeace@ntlworld.com.

**2679 NOTES & QUERIES. SOUTH AUSTRALIA, 1894-1906, THE TANNENBERG COLOUR TRIALS by Sandy Forbes (1174)**

Over the years I have gathered quite an accumulation of this material and now is the time to put it into some semblance of order. So far all I have to guide me is Robson Lowe's Encyclopaedia , issued in 1962, where he states that the colour trials of the 2½d can be found "in the issued colour and seven other colours, the 5d in seven colours"

I find this to be a little bit ambiguous as the colours themselves are not listed. It also raises the question were the same colours used for both face values? Or are they slightly overlapping lists?

Using the colour names from the Stanley Gibbons Colour Guide, 1967, I have in my collection the following;

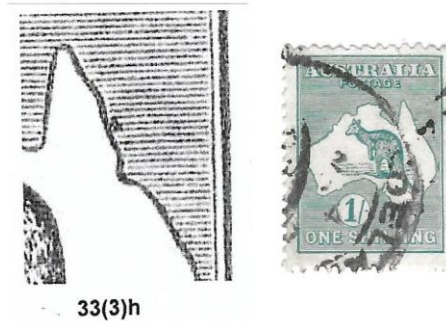
<b>Colour</b>	<b>2½d</b>	<b>5d</b>
<b>Agate</b>	*	*
<b>Pale Brown</b>	*	
<b>Pale Red Brown</b>	*	*
<b>Lake Brown</b>	*	*
<b>Pale Yellow Olive</b>	*	*
<b>Rich Purple Brown</b>	*	*
<b>Pale Brown Purple</b>	*	*
<b>Bright Violet Blue</b>	*	
<b>Pale Ultramarine</b>	*	*
<b>Cobalt</b>	*	

The question I ask is whether any member knows of any other published paper or list that has upgraded our understanding of these colours? Has any member made a similar study of these colours and would be prepared to comment on my list ?

I look forward to an open discussion.

**2680 NOTES & QUERIES. KANGAROO VARIETIES – SOME OBSERVATIONS by Ian Carter (1810)**

**1926 1/- Kangaroo - Variety - Colour spot off Queensland coast**



I recently acquired the attached variety and as I was writing up realised I could see the top watermark line. This variety was first listed in 2017 as BW 33h, position 3R12.

The colour mark off Queensland appears as illustrated. There is also an area of colour touching the inner frame at the right opposite Brisbane



With top watermark line visible and the watermark positioned to the right, it can only be from line 1 positions 2 to 6. I appreciate mine may not be the first reporting of this.

**Early Date for 2/-Maroon Kangaroo (single wmk) (SG 74, BW38)**

Another recent discovery was an early dated used copy of the narrow crown watermark two shilling. It is possible to read the (GP) "O MELBOURN" (E) date as 29 AP 24. The catalogue lists the date of issue as 1<sup>st</sup> May 1924



*Editor's Note – this article was corrected from that submitted. Do other readers have comments, or observations from their own study of these stamps?*

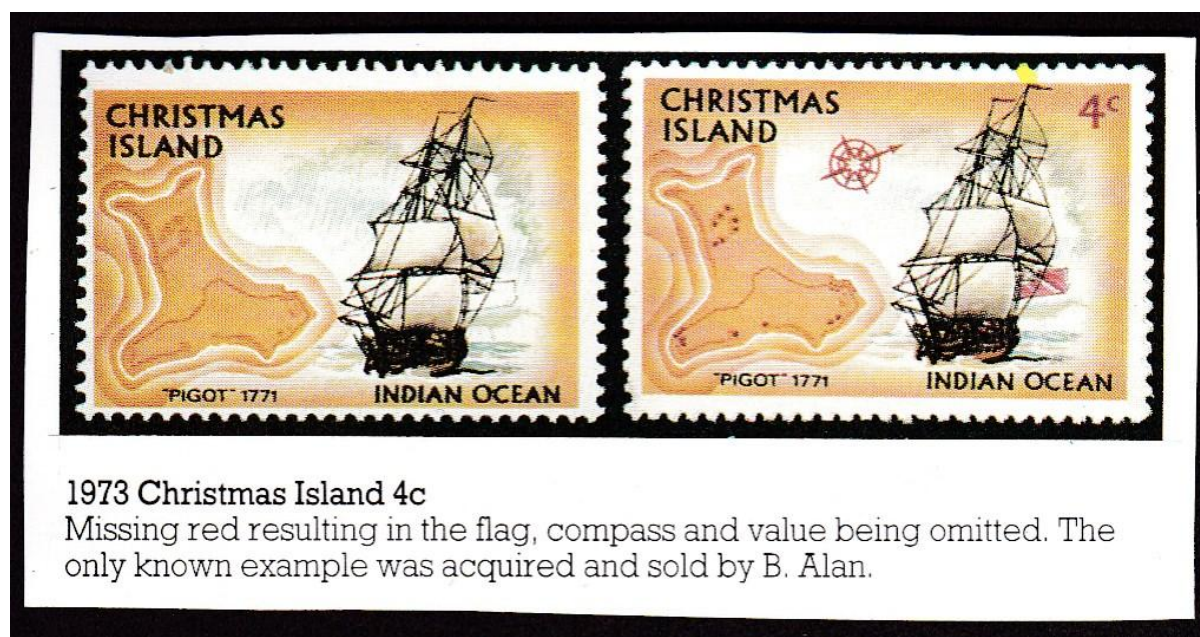
## 2681 SOME RARE MISSING COLOURS FROM NORFOLK ISLAND AND CHRISTMAS ISLAND by RICHARD GUY FACCCNSW (1616)

In looking through some missing colours in my collection from Norfolk Island and Christmas Island, there are two examples that readers of the Bulletin may not have seen before. There are interesting stories told about each of them

### 1. Missing magenta in 4 cent 1973 ships issue from Christmas Island.

This rare copy was once thought to be unique. I bought my copy ages ago from Gary Watson of Melbourne. When it arrived, it had this scan and information about a B Alan of London, who thought it was unique. See figure 1. I compared the top perforations on my new missing colour with those in the scan, and they did not match. Therefore there were some more examples of this error, and not just the one copy. So other copies might be out there in collections somewhere.

I also recall Melbourne dealer Richard Juzwin once handled a 95% missing magenta of this stamp. The missing bits on my stamp are the island settlements, ship's flags, compass and value. There are three flags in the design, one near the decking, and two on the mast tops that are hard to see. See figure 1.



**Figure 1. Missing magenta on the 4c 1972 Christmas Island Ships issue (with a normal).**

This error is not included in Pierron's catalogue (1) of missing colours, as I was unable to locate my stamp when asked. Therefore, the catalogue went to print therefore without it being added.

## 2. Missing Black on 50c 1980 Rotary International 75 Yr commemorative

This rare missing colour was formed when a small strip of paper 3¾" wide prevented the printing of part or all of the black ink (name and value) missing from seven stamps. See figure 2 for the detail.

This item was spotted by a Derek Warboys, a London Stamp dealer, when he was viewing the auction catalogue of a Melbourne auction in 1982. The estimate was just \$100, and there was no mention of the missing black colour in the lot description. What should he do? Should he fly to Melbourne for the auction? He decided he could not do that, so he bid A\$330, and hoped for the best. He won the lot, which eventually arrived on the other side of the world. (The full story is written in the Australian Stamp monthly in 1982. See reference 2.) I bought my copy in 2012 from Melbourne dealer Gary Watson, who had handled it twice. The vendor on the day was Michael Gosney from Farnborough, who was a keen collector of Rotary stamps.

This error is listed by Pierron, but he has just an image of a single stamp. That does not look as impressive as an image of the whole sheet. A look at the complete piece with lines drawn showing where the missing colour came from is better. See figure 2.



**Figure 2. A reduced scan of the part of the sheet missing black.**

The sheet has seven units affected, of which only two had the black completely missing. It had been sold intact in the auction sale of Gawaine Bailie in January 2007. It has since been divided up into two strips. In unit 3 on the bottom row, all the black



is missing except for the “c”. Gibbons lists this item, and the latest price I can find is £10,000\* in 2018 for the single stamp. My example is the bottom row of the sheet (see figure 3) with one of the two completely missing black colour stamps included, and two partially missing black.



**Figure 3.** The piece showing a completely missing black example and two partially missing black examples of the Norfolk Island Rotary issue.

These two examples must be key items in any missing colour selection from these two islands.

*Acknowledgements:*

Richard Juzwin and Gary Watson are thanked for their comments about handling these rare items.

**References**

1. Modern Great Britain and Commonwealth missing colours errors published in 2007 by Tom Pierron.
2. Australian Stamp Monthly, December. Written by O Hornung. Page 31.

\* Editor – shown as £12,000 in 11<sup>th</sup> edition Gibbons Australia catalogue (late 2018)

**MEMBER BIOGRAPHY – DAVID COLLYER**

I am an Australian member who joined the society in the 1990’s. During this time, I displayed at the society on a number of occasions. At Pacific Explorer 2005 in Sydney I became an international Fellow of the society.

For most of my life I have lived at the base of the peninsula formed by the meeting of the Parramatta and Lane Cove rivers that feed Sydney Harbour. My grandfather came to Sydney in 1908 and was an engineer on Sydney Harbour Ferries until retiring in the early 1960s. His Ferry, the “Lady Denman”, was featured on the Australian 1979 Ferries and River Steamers series 35c value. That particular Ferry is now housed at Huskisson in the Jervis Bay Maritime Museum.





My grandmother was an active breeder of Pug dogs from the late 1930s to the 1970s. The family were active in the Pug Dog Club and the Show dog circuit. One value of the Australian 2013 “Top dogs” set features a Pug.

My father, Ken Collyer, was the first President of the Australian Stamp Promotion Council (ASPC). He and the others on that executive were the foundation members. In 1984 the ASPC changed its name to the Australian Philatelic Federation (APF). My father was also the foundation President of the NSW Stamp Promotion Council which was the body that sent him as a delegate to the foundation meeting of the ASPC. He was instrumental in proposing that miniature sheets could be made

from the 1978 50<sup>th</sup> Anniversary of the 1928 Melbourne Philatelic exhibition depicting the 3d Blue Kookaburra

I have lived with orthopaedic issues since childhood which precluded me from participating in most sports. On the other hand, I experienced a wide range of orthopaedic appliances and have followed their development over the years.

I started collection in the mid-1960s, interning with a Hungarian dealer who had a shop in a Sydney arcade. My father and I were active in Scouting so it was natural to collect Scouts on stamps and in particular postal markings of Scouting events in Australia. As members of the Australian Scout and Guide stamp society we regularly presented displays at Jamborees.

My first attempt at exhibition was at APEX 1970 during the Captain Cook Bicentennial year. After a break to the early 1980’s I have supported philatelic exhibitions on a regular basis.

I have formed collections of:

- International airmail into or out of Australia 1925-1945
- Australia Post Pre-Paid Envelopes printed to private order
- Australian Forces mail for both WW I and WW II
- Australian Postal mechanisation.

I used my occupation of Librarian to build up a wide-ranging knowledge base. I am the National research coordinator for the Australian Philatelic Federation working out of the Philas Library in Sydney.

I have authored a number of works:

- Airgraphs and Australia* – 1986 produced with a grant from the Australian War Memorial
- T-for Tax* - with Richard Peck dealt with the mail taxing system and markings in Australia
- The Qantas Coronation Day airmail flights of June 1953 - the untold story - 2013

I have been a long-term member of the ACCC and was President from 2013 to 2016. During this period the society celebrated its 75<sup>th</sup> anniversary in 2015. I have also been a long-term President of the Australian Society of Polar Philately.

I have been a member of the Philas executive since the mid 1970's and have been Vice President since 2005. I was the final Vice President of the NSW Stamp Council (NSWSC) when it joined with Philas in 2004. When the groups amalgamated, they became the Philatelic Development Council (PDC). I was vice president for the first year but chaired all council meeting because of the absence of the elected President. I then did two teams as President before becoming Philatelic Development Officer.

Finally, I was awarded 'Australian Philatelic Researcher' in September 2019 at Adelaide and the war time airmails to and from Australia was awarded the Grand Prix national at Aeropex 2019.

### **2682. NOTES & QUERIES. FORGED 5/- KANGAROO by Nick Stuart (1848)**

I recently bought an auction lot of mixed 'Roos and KGV heads. Amongst it was a 5/- Roo, perf 12, which looked like a nice fine used example. However, I quickly realised that it had no watermark and that, under a glass, the printing was very different to an actual stamp so it's obviously a forgery.



**Image of stamp at twice original scan size.**

This is a potentially worrying discovery. I am not aware of recent forgeries of high value kangaroos. Has any other member come across them?

*Editors Thoughts & Response (which others may also wish to comment on) – From the scan it is not obvious to me why this is a forgery, and it may be helpful if Mr. Stuart is able to attend a meeting (or convention) at some stage, so others may see the actual item (or show it to a dealer member of the society who normally exhibits at Stampex (or York), when a fair programme re-opens.*

*If, as he asserts it is a forgery, could it be (a hitherto unreported?) postal forgery (as the 5/- kangaroo is hardly rare enough to be worthwhile as a philatelic forgery).*

*The 5/- is listed on "third watermark" paper with sideways watermark (with only one known copy). Is it feasible (because of the paper size that some stamps printed from such a sheet could exist without watermark (as the normal print area is not square)?*

## **BOOK REVIEW – Brusden White Dues Catalogue (3<sup>rd</sup> edition) – Alan Cross (1719)**

Most readers of the Bulletin will be familiar with the Brusden White (BW) catalogue series which comprehensively lists all Australian Commonwealth stamps to 2001 as well as various related items (booklets and postal stationery). Key popular volumes such as the Kangaroos and George V Heads see updates every 2-3 years (so are on their 6<sup>th</sup> and 5<sup>th</sup> editions), and the George VI volume has recently been updated (hopefully to be reviewed within the next couple of bulletins), as indeed has the first QE2 section.

This year sees the 3<sup>rd</sup> edition of the Postage Due Volume which was originally prepared in 1999 and comprehensively updated (largely by the late Paul Fletcher) for 2014 publication, so edition 3 in 2020 marks a substantial shortening of the inter-edition period.

The initial striking impression of the new volume is it is in A4 (the format adopted last year) and illustrations throughout are fully in colour, though are for the most part colour updates of the 2<sup>nd</sup> edition illustrations. The other key change is that rather than listing stamps on cover in a table at the beginning of each section they are listed as part of each listing, both for a single and where the stamp is on cover with other stamps; some dues (notably ½d values are very scarce in single usage; because of the general approach of doubling the charge when postage was not prepaid), and pricing reflects this.

Other than these points this edition is essentially an update, so there is limited additional information; many prices are not changed (particularly for lower value stamps), though there has been a pricing review of much of the higher value material (with some movements in both directions, reflecting the market of recent years).

As in the previous edition, the catalogue lists the due of Victoria and New South Wales, and collectors of the latter (who are not wider dues collectors) should note that the listing of the 2d due perforation 11.5,11.8 on chalky paper has been restored (the item is listed by Gibbons as SG D13a) as BW ND23 with a comment that there are three known used copies. The consequence of this is volume 2 dues from ND23 to ND39, and have been renumbered as ND24 to ND40 (so if you are buying off an un-illustrated listing in the near future, take care).

Overall initial impressions are that the new volume is better than the edition it replaced though a small number of typos have crept in. As a specialist dues collector (who is acknowledged for providing a small amount of information included), there were a couple of “???” items where my collection may be capable of filling in some of the detail next time in 3-6-15 years, but the catalogue illustrates why such an apparently simple stamp (with only 2 designs in use for a period of 70+ years) provides a rich collecting area, and is an essential resource for any collector wanting to go beyond the basic Gibbons listing).

**CONSTITUTION AND RULES**  
**(Draft Revisions {for AGM approval} occasioned by the Covid-19 emergency)**

1. Name:

The Society shall be known as:

**THE BRITISH SOCIETY OF AUSTRALIAN PHILATELY.**

2. Objects:

The objects of the Society shall be to foster interest in, and promote the study of, all aspects of Australian philately by:

Holding meetings in accordance with a published programme.

Encouraging the formation of study circles and the forming of regional sections.

Publishing the results of members' research, items of interest, members' philatelic enquiries and maintaining a record of Australian philatelic events.

Maintaining a library of books, periodicals and photographic slides and records on other media of Australian philatelic interest.

Circulating exchange packets among members of the Society in Great Britain.

Holding auctions of members' philatelic material.

(g) Procuring suitable philatelic material for sale to members on a non-profit basis.

3. Membership:

**Application:** Application for membership must be made on the Society's form and shall be dealt with by email circulation to Council, who shall have the right to accept or refuse any application without stating a reason for their decision.

**Subscriptions:** The annual subscription, being such sum as the Council shall from time to time determine in the light of the Society's financial position and thereafter be approved at the next AGM or EGM is payable in advance and shall become due on the 1<sup>st</sup> of January each year. Those members renewing their subscriptions before January 31<sup>st</sup> in the year due shall be entitled to a discount which shall be determined by the Council whenever annual subscriptions are reviewed. Members joining between 1<sup>st</sup> October and 31<sup>st</sup> December shall pay a full year's subscription which will cover the period until 31<sup>st</sup> December of the year following that in which they joined.

**Honorary Membership:** Honorary membership may be granted to such persons and for such periods and subject to such conditions as the Council shall determine.

**Termination of Membership:** The Council may terminate the membership of any person whose subscription has not been paid by the 1st April in any year.

Restoration of Membership: Ex-members who have been excluded under Rule 3(d) above may be reinstated by the Membership Secretary without reference to the Council, upon payment of the entrance fee and the subscription at the current rate.

If the Council at any time shall be of the opinion that the interests of the Society so require they may, by letter and without giving any reasons, invite any member to resign from the Society within a time specified in such letter and in default of such member's resignation submit the question of their continued membership to the next meeting of the Council; if thereupon two-thirds of the Council members present shall vote for their exclusion he/she shall thereupon cease to be a member of the Society without the Council being required, or under any duty, to give reasons for such decision.

4. Management:

The affairs and business of the Society shall be managed by a Council comprising three Officers: - President, Secretary and Treasurer plus up to nine ordinary members.

The President, who shall be appointed by the Council from the total membership as a mark of esteem, will hold the Office for a term of two years, the term commencing at the end of the Annual Dinner which normally follows the Annual General Meeting held in the year of appointment. The President shall preside at the AGM or any EGM.

The Council shall, at their first meeting held in each year after the AGM for that year, appoint a Chairman from one of their number, who shall preside at all Council and general meetings of the Society. The Chairman shall also preside, in the absence of the President, at the AGM or any EGM.

The Secretary and Treasurer shall serve for three years but may offer themselves for re-election. Ordinary Council members shall also serve for three years, one third of whom shall retire each year, but may offer themselves for re-election. Nominations for Secretary, Treasurer, or as an ordinary member of the Council shall be invited in 'News and Notes' and must be received by the Secretary at least twenty-one days before the AGM. Any member nominating another member for office shall confirm that the proposed nominee is able and willing to serve. The election of Officers and ordinary members of the Council shall take place at the AGM by show of hands, unless any member present requests a Ballot to be held, in which case the Ballot shall be taken forthwith. The names of persons nominated shall be published in the notice convening the AGM which shall be circulated with 'News and Notes' issued before the date of the AGM.

The Council shall also, at their first meeting held in each year after the AGM for that year make appointments for the tasks other than those undertaken by Officers, namely: - Editor, Exchange Packet Superintendent, Programme Secretary, Auction Organiser, Librarian, Librarian publications, Publications Stockholder, Webmaster, Data Controller, Publicity Officer. (NB The Webmaster will default to the Secretary unless another Council Member wishes to fill this role and the Data Controller will default to the Membership Secretary). In addition, the Council shall have the power to

appoint Committees and working groups, fill casual vacancies and co-opt members as they deem necessary.

At any council meeting a quorum shall consist of five members, of whom at least one shall be the President, Secretary or Treasurer. Any Committee shall consist of at least three members, of whom one should be the President, Secretary or Treasurer.

If an AGM is delayed, the terms of office of The President or Officers and Members of Council due for re-election will be extended by a similar period.

5. Meetings:

(a) Annual General Meeting: The Council shall fix the date of the AGM of the Society, which shall be held not later than 12 months after the date of the financial statements, such date to be published in the Programme.

Resolutions which members may wish to have considered at the Annual General Meeting shall be sent to the Secretary, in writing, at least three months before the date thereof and will be published in 'News and Notes'

Members who may wish to discuss a subject under 'Any Other Business', which is proper to an Annual General Meeting, should notify the Secretary in writing at least 24 hours before the opening of the Annual General Meeting.

A quorum shall consist of 12 members and at least three members of the Council of whom two must be Officers.

(b) Extra-Ordinary General Meeting: The Secretary shall convene an Extra-Ordinary General Meeting at the request of the Council, or at the written request of at least ten members sent in writing to the Secretary. Such a request shall state the purpose of the meeting and shall include the wording of any resolution which the members making the request wish to be considered by the meeting. At least 21 days' notice of the meeting shall be given, and a quorum shall consist of 12 members and at least three members of Council of whom at least two must be Officers.

(c) General meetings: Meetings of the members for philatelic purposes shall normally be held in London monthly, except in the month of Convention (normally May) and July and August on dates and at venues to be fixed by the Council. Meetings in other parts of the United Kingdom may be held by local arrangement, with prior sanction of the Council, who will defray the expenses incurred thereby, but may fix a limit to the expenditure.

(d) Convention: An Annual Convention shall be arranged by the Council and may, if agreed by Council, be held in conjunction with the Annual General Meeting. The Convention shall include the annual philatelic competitions, an auction, any other suitable items of interest to members and shall conclude with the Annual Dinner and the presentation of the awards. If the Convention is not held for any reason, the Annual General Meeting shall be organised as a separate event.

(e) Council meetings: Meetings shall be held as determined by the Council, providing that there are not less than three meetings held in any financial year. Such meetings may also be organised either remotely (by video conferencing) or by circulation of relevant papers.

6. Finance:

The financial year shall run from 1<sup>st</sup> January to 31<sup>st</sup> December.

The Treasurer shall keep proper books of account, which shall be open to inspection by any member of the Council at any time and shall produce to each Annual General Meeting a Statement of Income and Expenditure, and a balance sheet, made up to 31<sup>st</sup> December preceding the meeting, which accounts shall previously have been scrutinised.

An Honorary Scrutineer, professionally qualified, shall be elected at each Annual General Meeting to hold office until the close of the next Annual General Meeting, save that a casual vacancy in the office may be filled by Council.

All the assets of the Society shall be vested in the Council for the time being as Trustees, who shall take reasonable care of them, including adequate insurance, but shall otherwise be exempt from personal liability.

7. 'News and Notes':

'News and Notes' shall be prepared by the Bulletin Editor and circulated to all members within the Bulletin. It shall contain reports of meetings, additions to the Library and any other matters relevant to the business of the Society. Matter included shall be the subject to the overall control of the Council.

8. 'The Bulletin':

'The Bulletin' shall be sent either physically or electronically to all members of the Society concurrently with 'News and Notes' and contain matters of philatelic interest relevant to the objects of the Society. It shall be compiled under the direction of an Editor, who shall be appointed annually by the Council, but matter included shall be subject to the overall control of the Council. Names and addresses of the current officers and other responsibilities shall be recorded within the Bulletin.

The Society shall make available for purchase by members a searchable file of all content of the BULLETIN up to 2015. Additions to this file shall be made every five years.

9. Library:

A reference and lending library shall be maintained by the Society and placed in charge of a Librarian, who shall be appointed annually by the Council.

A library of photographs or photographic slides relative to the objects of the Society may be maintained by the Society and shall be in the custody and under the control of the Librarian.

A reference and lending library of Publications shall be maintained by the Society and placed in charge of a Librarian, who shall be appointed annually by the Council.



Relevant material stored on other media, such as DVD, CD, Memory Card or Memory Stick may also be stored by the Librarian

10. Publications:

Publications will be reviewed by Council who shall:  
consider whether the Society will publish and or distribute any work of research or study undertaken by a member. Any member may submit a draft manuscript for consideration.

obtain printing and/or binding estimates, decide upon the quantity and arrange for production.

decide and agree upon the sale price structure of any book or monograph to be published by the Society.

deal with the legal obligations of depositing copies of works published by the Society.

arrange for ISBN registration of works published by the Society.

arrange for reviews of works published by the Society to be undertaken in appropriate journals.

consider entry into approved competitions.

(h) effect the disposal of remaindered works.

11. Exchange Packets:

Exchange packets shall be circulated amongst members in accordance with the Exchange Packet Rules, which shall be fixed from time to time by the Council. Exchange packets shall be under the control of an Exchange Packet Superintendent, who shall be appointed annually by the Council.

12. Auctions:

Private auctions of philatelic material shall be held by the Society from time to time at the discretion of the Council. Only members of the Society shall be entitled to bid and submit lots for sale. The Auctions shall be under the control of an Auction Organiser, who shall be appointed annually by the Council. Auctions may be either physical and/or postal.

13. Awards:

The Council may, at their discretion, make awards of either silver or bronze medals, or other awards, for services either to Australian philately or to the Society. An award of the Society Silver Medal shall entitle the recipient also to Honorary Life Membership of the Society.

A recipient of the Society's Silver Medal or the Tony Brander Trophy, wherever those are awarded, shall be appointed to Fellowship of the Society. Additional appointments to Fellowship of the Society may be made each year by the Council, at their discretion. Recipients of Fellowship may use the letters FBSAP after their name if they so desire.

Awards will normally be announced and presented at the annual dinner which follows the Annual General Meeting. If this is not possible, they will be made at a convenient event. Awards will be published in News & Notes. They will not be made posthumously, other than in the case of multiple recipients where some are still living.

14. Variation and Application of the Rules:

Any variation of these Rules may be made only at the Annual General Meeting, or at an Extra-Ordinary General Meeting specially convened for the purpose and shall take effect from the beginning of the next Society year, unless the meeting fixes some other date upon which the alteration is to become effective. The Chairman of the meeting, or any twelve members present at the meeting, may, before the conclusion of the meeting, demand a ballot of all members of the Society on a proposal to change the Rules and if such ballot is demanded it shall be taken by post under the direction of the Council within 28 days of the demand and the result shall be announced in the next convenient issue of 'News and Notes'.

If circumstances dictate that a Meeting of Council has found it necessary immediately to amend or vary any specific rule, then that amendment or variation must be discussed and agreed at the next AGM (or EGM if held earlier). If not so agreed, then that amendment or variation will immediately fail and the original wording will continue in force.

15. Privacy Policy:

The Privacy policy shall form part of the Rules of The British Society of Australian Philately (BSAP). The Policy shall be reviewed by the Council of the Society on an annual basis. The purpose of this policy is to confirm that the Society is compliant with the General Data Protection Regulation (GDPR) requirements or any relevant subsequent or replacement legislation.

In the event of any Member of the BSAP Council requiring the use of membership data, the Data Controller will provide such data to the Council member to ensure the ongoing efficient running of the Society.

BSAP will use and hold the supplied data for the purpose of organising the Society, running the Exchange Packet, running Society Auctions, promoting Australian and General Philately and providing services to the membership.

Data is collected from the Membership Application form and then updated yearly on completion of a Membership Renewal Form by all members.

The data that is collected will generally be members' names, addresses, 'phone numbers, email address, membership status (including but not limited to whether a

collector or trade member), collecting interests (if and where declared), whether taking the Exchange Packet and details of annual subscriptions received. Only data that is required for the efficient running of the Society will be kept. No Special Categories of data, as defined under Article 9 of the Regulations, will be collected.

Data is held electronically on computer or portable media or may be in a written document, stored securely at the homes of the Council members of the Society. All out of date data will be deleted or destroyed after an appropriate time.

If a member dies or resigns, data may be held for an appropriate period as decided by Council, but if a member, or next of kin/executor, requests that the data be deleted immediately, then that will be done.

Information held on record will not be shared with any outside person or organisation, other than for the purposes of distribution of the Bulletin.

If a member wishes to see the data being held about themselves, they should contact the Data Controller by email or in writing. The Data Controller, or in their absence the Secretary, will inform the relevant authority of any data breach.

16. Interpretation:

Any dispute arising from the interpretation of these Rules or any contingency for which no provision is made in the Rules, shall be referred to the Council, whose decision shall be final.

17. Winding-up of the Society:

The Society may be dissolved by the consent of three-quarters of the members, who shall have replied to a letter sent by the Council to all members proposing the dissolution, such consent being testified by their signature to an instrument of dissolution in a form provided by the Society. If, on the dissolution of the Society, there remains, after the satisfaction of all its debts and liabilities, any property whatsoever, such property shall be disposed of to a charity to be specified in the instrument of dissolution, but so that no member of the Society shall profit individually from such disposal.

Final Draft revision {for AGM Approval} 16/6/2020

## **AUSTRALIAN PHILATELY IN PRINT #4, 2020.**

A list of articles found in Journals & Bulletins held (or seen) by the Librarian (Periodicals).

## **AUSTRALIAN COMMONWEALTH COLLECTORS CLUB BULLETIN, Vol.59, No.1, March 2020.**

Art.3785: 1d KGV – Melbourne & Brisbane CTO issues – Troy Laane & Eric Laane  
Art.3786: From Large Letter to Parcel – David Collyer ACCCF  
Art.3787: QANTAS Coronation Day Airmail-Australian mail bag tags-D Collyer ACCCF  
Art.3788: New Die Proofs of 1945 Duke of Gloucester discovered – Geoff Kellow ACCCF  
Art.3789: Some rare recent Parcel Post Satchels – Richard Collyer ACCCF  
Art.3790: An unusual use of a Specimen Franking Machine – Richard Collyer ACCCF  
Art.3791: Sydney Pneumatic Mail Services, 1928-1985 – David Collyer ACCCF  
Art.3792: 1975 24c Radio Astronomy flaws – Tim Cowley  
Art.3793: Yellow Postal Coding Tapes – David Collyer ACCCF  
Art.3794: 1966 1c QE2 partially imperforate – Tim Cowley  
Art.3795: NSW Relief Date-Stamps-“POST OFFICE NO 1/2”, updates-Rod Buchko ACCCF  
Art.3796: 1978 Famous Aviators Miniature Sheet Forgery – John Bozic  
Art.3798: The treatment of Philatelic Mail in Sydney – Richard Peck ACCCF  
Meeting Minutes for AGM, for meetings on 15 December 2019, & 20 January 2020

## **AUSTRALIAN STAMPS PROFESSIONAL, Vol.14, No.2.**

The Australian Rocket Society: Australia's First Mail Rocketeers. The Spaceflight Movement and the Origins of Rocket Mail – Kerrie Dougherty OAM.

Collecting in the time of a pandemic.

Collecting KGV Penny Green and Violet Varieties Pt.16 – Dr Scott Starling.

PHG Mail during WW2: Japanese Forces Mail Pt.5 – Hans Proebsting.

Commemorative Postmarks on Registered Covers – Peter Bond.

Imperial Incident Darnanus – Brian Peace FRPSL APR.

Pioneering Burns Philip & Co. Ltd. Shipping in the Pacific Pt.2 – David Milner.

## **CINDERELLA STAMP CLUB OF AUSTRALASIA, Vol.34, No.1, April 2020.**

From the Secretary – Paul Storm.

From the Editor – Marilyn Gendek.

CSCA at the Canberra Stampshow 2020.

In the mailbox:

1. New find- Customs Duty 10d: double line printing – Dave Elsmore.
  2. New – on-line bookley by Dave Elsmore Queensland 1901 King Edward VII Duty Stamps 1d to £5 (download free from ozrevenues.com).
  3. Response: Movie tape and X-ray label from Vito Milana.
  4. PTPO cover: Box Hill City Council with exhibition cinderella – Peter Simpfendorfer.
  5. Post Labels: Woolworth's delivery: Return to Sender and Tax – Richard Peck.
- 2020: International Year of the Nurse & Midwife – Marilyn Gendek.  
Cruise Destination Cinderellas – Dave Elsmore.  
New Zealand Tuberculosis Seals – Dave Stalker.  
Australia: 1917 War Chest – Vito Milana.  
The Ten Commandments for Married Philatelists (from Stamp News, December 1978).  
Wallace & Associates Reward Coupons – Peter Simpfendorfer & Vito Milana.  
COD: First and last labels – Richard C Peck.  
Tourism and the Railway – Richard C Peck.

Europa Cinderellas – Richard Rathbone.

**CINDERELLA PHILATELIST, Vol.20, No.2, April 2020.**

“Save the Children Fund” label. Request for identification. With 1d donation cost it is likely to be UK, NZ, or Australian.

**THE COURIER, No.68, December 2019.**

Early letters from Van Diemen’s Land – Allen Shatten.

New Tasmanian Philatelic Publication: “Post Office and Datestamp Compendium” by John Hardinge.

Two new Tasmanian Datestamp Types- John Hardinge.

Mount Lyell Tourist Association’s Postcards – John Campton.

The Launceston City Park Zoo and Iconic Spurling Postcard – Randall Askeland.

Postage Paid cove – Peter Allan.

Tasmania Barred Numeral 139 – Black Boy, Reedy Marsh Black Boy, Mathinna, Tarleton, Steppes – Randall Askeland.

Swanston & the Merediths – early Van Diemen’s Promissory Notes – Dingle Smith.

A Late Loose Ship Letter – Alan Grey.

The Four Pence Chalons: the roller flaws, a new update – Laurent Simoni.

**GIBBONS STAMP MONTHLY, April 2020.**

Around the Houses – incl. Abacus.

Australia and the Antarctic Pt.2 – Nicholas Oughton.

**GIBBONS STAMP MONTHLY, May 2020.**

2019 Commonwealth Postal Stationery (includes Australia) – Geir Sór-Reime FRPSL.

Jewels of Queen Victoria Philately: British Empire Rarities (includes Western Australia “Inverted Swan”).

Jewels of Queen Victoria Philately: The Face of the Empire (includes some Australian States).

Australia and the Antarctic: Part 3 – Nicholas Oughton.

**GIBBONS STAMP MONTHLY, June 2020.**

Obituary: Alan Watson (1970-2020).

Postal Stationery Matters: Australia’s 1908 USA Fleet Cards; New Zealand clothing in the 1880s – Peter van Gelder.

**THE LONDON PHILATELIST, Vol129, No.1473, March 2020.**

Invitation to the AIJP Academy & Congress for Friends of Philatelic Literature, 8 May at RPSL, London.

Review: “The Postal History of the UPU> The Postal Card. Worldwide 1869-1974. (In 2 Vols) by James Peter Gough RDP FRPSL.

**THE LONDON PHILATELIST, Vol129, No.1474, April 2020.**

Book Review: “A guide to philatelic research at the British Library, by David R Beech, 2019”.

**THE LONDON PHILATELIST, Vol129, No.1475, May 2020.**

New South Wales: 1850 Sydney View’s Essays – David R Beech MBE FRPSL.

**PERFIN SOCIETY BULLETIN No.426, June 2020.**

A British Maritime Hero and an Australian Perfin – John Mathews.

**THE QUEENSLAND STAMP COLLECTOR, May-July 2020.**

Editorial; APF News; QPC News; Club Scene.

Talk Queensland: Receiving Offices – more examples – Craig Chappell.

An Unremarkable Cover – Jeff Gunston.

Philately and Education – Paul Xavier.

Registered Post – Joan Orr.


Trophies and other Awards.

Exhibition Results – Canberra Stamp Show 2020.

**STAMP LOVER, April 2020.**

NPS library reopens at RPSL.

AEColes



**STEVEN ZIRINSKY**  
MEMBER PTS, APS, NZSDA, APTA  
Stamps - Revenues - Postal History - Commercial Mail

**Australia**

PO BOX 230049, Ansonia Station, New York, NY 10023 USA  
szirinsky@cs.com (t):718-706-0616

[www.zirinskystamps.com](http://www.zirinskystamps.com)  
@ZirinskyStamps

**COPYRIGHT: Material appearing in THE BULLETIN is copyright and must not be reproduced without the prior written permission of the authors.**

# Australia

## in London



Important and unusual Australia material features regularly in our popular public auctions on London's Strand, traditional heart of the stamp market, and our **British Empire & Foreign Countries** sale on **September 22nd** will include the exceptional **Malcolm Barton** collection of **Tasmania Pictorials**.

Consignment for future auctions are cordially invited. Vendor commission rates are fully inclusive with no hidden add-on fees. Vendor payments are renowned for their promptness and reliability

For further advice and all assistance contact **Constanze Dennis** or **Tom Margalski** at the address below.

## GROSVENOR

399-401 Strand Third Floor London WC2R 0LT  
T: 020 7379 8789 F: 020 7379 9737 E: [info@grosvenor-auctions.co.uk](mailto:info@grosvenor-auctions.co.uk)

---

[www.grosvenorauctions.com](http://www.grosvenorauctions.com)

# abacus auctions

## The 'Tillie Mitchell' Commonwealth of Australia

featuring a complete sheet of the Engraved 6d Kookaburra, die proofs, KGV1 errors & plate numbers, outstanding Kangaroo covers including the astonishing 2/- imperf plate proof pair and 40+ State/CofA combination frankings

Public Auction in Melbourne Saturday 29 August 2020



Request your complimentary catalogue now

abacus  auctions

29 Hardner Road  
Mount Waverley, Victoria, 3149  
AUSTRALIA

Post Office Box 296  
Mount Waverley, Victoria, 3149  
AUSTRALIA

Phone: +61 3 8513 0595  
Email: [info@abacusauctions.com.au](mailto:info@abacusauctions.com.au)  
Web: [www.abacusauctions.com.au](http://www.abacusauctions.com.au)