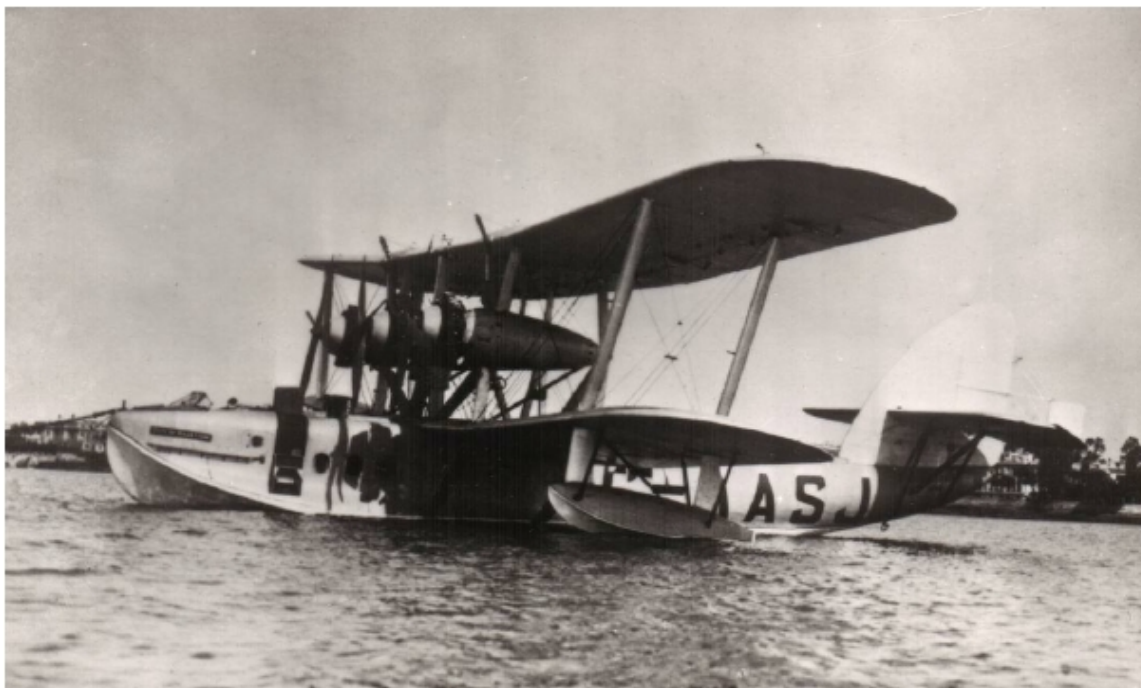


# The Bulletin



The British Society of Australian Philately  
*Founded 1933*

## CONTENTS



<b>CONTINUING RESEARCH ON THE GV 1D VARIETIES (Part 59)</b> by Gordon Monk, Bert Wajer and the late Paull Kaigg .....	36
<b>AUCTION NOTES</b> by John Bozic.....	41
<b>1913 1D KANGAROO DIE 1–DIE 2 PAIR: A COMMENT</b> By David Adams and Philip Adams.....	42
<b>20<sup>th</sup> CENTURY POSTAGE RATES AUSTRALIA AND NEW ZEALAND</b> by Colin Tabcart.....	44
<b>RESEARCH ON AUSTRALIAN RAILWAY LUGGAGE AND PARCEL LABELS</b> Part 6 by Ian Spencer.....	59
<b>CITY OF KHARTOUM FLYING BOAT RUNS OUT OF FUEL; ONLY PILOT SURVIVES</b> Part 1 by Brian Peace .....	63
<b>FROM THE EDITOR</b> .....	70

## OFFICERS OF THE SOCIETY

### PRESIDENT

D.D. Speer FBSAP, The Mede. Luppitt, Honiton, Devon EX14 4RT

Tel: 01404892787 Email [dave.speer@hotmail.com](mailto:dave.speer@hotmail.com)

### HONORARY SECRETARY

Dr. P.G.E.Reid, 12 Holly Spring Lane. BRACKNELL, Berks. RG12 2JL

Tel. 01344867311 Email [pge.reid@gmail.com](mailto:pge.reid@gmail.com)

### HONORARY TREASURER, MEMBERSHIP SECRETARY and DATA CONTROLLER

Malcolm Price, 33 Manor Gardens, Hurstpierpoint, West Sussex, BN6 9UG

Tel: 01273 833963 Email: [bsapmjp@btinternet.com](mailto:bsapmjp@btinternet.com)

AUCTION ORGANISER	Huw Williams	8 Graham Road, Hampton, Middlesex, TW12 1AN	Tel. 0203 566 3837: Email <a href="mailto:huwie35@sky.com">huwie35@sky.com</a>
PACKET SUPERINTENDENT	Brian H Sullman	13 Vallance Place Cravells Road, HARPENDEN Herts. AL5 1AX	Tel. 01582 460317 Email <a href="mailto:bhsullman36@btinternet.com">bhsullman36@btinternet.com</a>
LIBRARIAN (Periodicals)	A.E.Coles	13 Lakeland Drive Frimley, CAMBERLEY Surrey GU16 8LD	Tel. 01276 25908 Email <a href="mailto:a.e.coles@ntlworld.com">a.e.coles@ntlworld.com</a>
LIBRARIAN (Books)	Tom. D. Gillespie	11 Brook Close BOGNOR REGIS West Sussex PO21 5PN	Tel. 01243 826478 Email <a href="mailto:Tomgillespie123@btinternet.com">Tomgillespie123@btinternet.com</a>
PUBLICATIONS STOCKHOLDER	Huw Williams	8 Graham Road, Hampton, Middlesex, TW12 1AN	Tel. 0203 566 3837: Email <a href="mailto:huwie35@sky.com">huwie35@sky.com</a>
PROMOTIONS AND PUBLICITY OFFICER	Ian Perry	29 Chetwynd Grove, NEWPORT, Shropshire, TF10 7JW	Tel: 01952 825941 Email: <a href="mailto:ianperrystamps@aol.com">ianperrystamps@aol.com</a>
BSAP STAMP FORUM FORUM MASTER	Dag Rohjell	<a href="http://www.bsap.org.uk/forum">www.bsap.org.uk/forum</a>	<a href="mailto:posttildag@hotmail.com">posttildag@hotmail.com</a>
PROGRAMMME SECRETARY	C.V.Mount	151Aa Southampton Road, RINGWOOD, BH24 1HU.	Tel: 01425 474310 Email: <a href="mailto:cv.mount@googlemail.com">cv.mount@googlemail.com</a>
WEBMASTER SOCIETY WEBSITE SOCIETY EMAIL	Dr. P.G.E.Reid	See details as Hon. Secretary above <a href="http://www.bsap.org.uk">www.bsap.org.uk</a> <a href="mailto:info@bsap.org.uk">info@bsap.org.uk</a>	See details as Hon. Secretary above
BULLETIN EDITOR	Graham Keates	37 Nashgrove Lane, Finchampstead. WOKINGHAM, RG40 4HE	Tel: 0118 9733129 Email: <a href="mailto:grahamkeates@gmail.com">grahamkeates@gmail.com</a>

### ADVERTISING RATES IN THE BULLETIN

POSITION	PER INSERTION		SIX INSERTIONS	
	FULL PAGE	HALF PAGE	FULL PAGE	HALF PAGE
BACK COVER	Not available	Not available	£300	Not available
BACK COVER (INNER)	Not available	Not available	£270	Not available
FRONT COVER (INNER)	Not available	Not available	£270	Not available
INSIDE SHEET	£55	£36	£216	£156

\* ALL ENQUIRIES AND COPY SHOULD BE SENT TO THE EDITOR

\* THE CONTENT OF AN ADVERTISEMENT MAY BE CHANGED FOR EACH ISSUE

\* DEALER INSERTS IN ISSUES CAN BE ARRANGED. CONTACT THE EDITOR FOR DETAILS

### SUBSCRIPTION RATES FOR 2018

Annual Subscription £30 UK. For overseas, rates vary according to postage requirements, see website membership form. A discount is offered for prompt payment on renewal. Electronic .pdf download copy only £19. Back Issues available from the Publications Stockholder at £5 UK. Overseas £6 (surface) or £7.50 (air) inclusive of postage. Cheques to be made payable to "BSAP". Electronic back numbers from 2010 are available from the Treasurer at £15 per year or £3 per issue. Electronic back numbers from 2010 are available. Please contact the Hon. Treasurer in first instance.



DERBY OFFICE

Cavendish House  
153-157 London Road  
Derby  
DE1 2SY



LONDON OFFICE

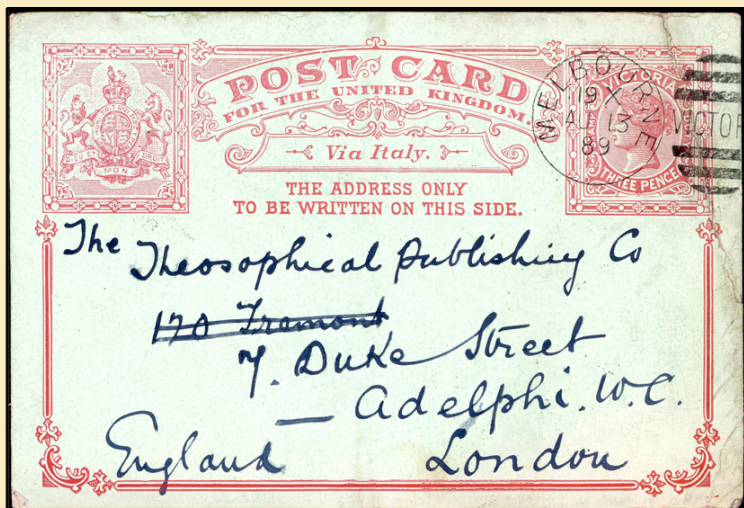
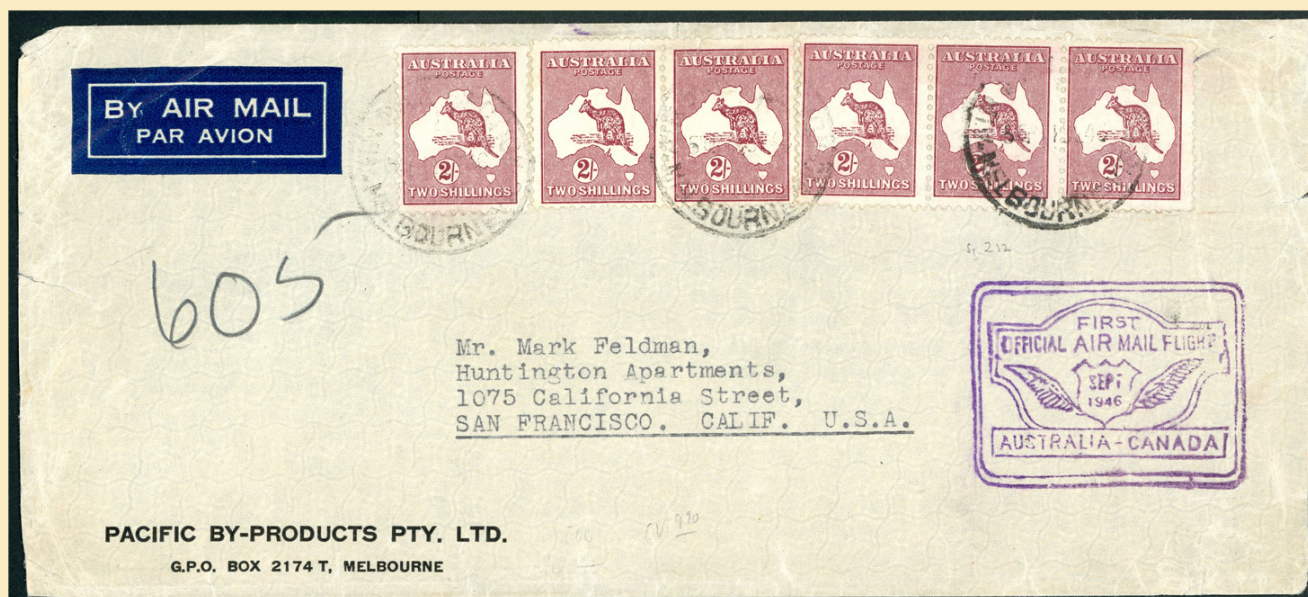
Suite G06  
Dowgate Hill House  
14-16 Dowgate Hill  
London, EC4R 2SU

Over 65 years' Service to Philately

June 3 2020 - Worldwide Auction to be held in Derby

Our June auction will include offerings of fine, rare and unusual Australia and Australian States stamps and postal history.

Viewing at London 2020 - See us at stand 104



In association with  
[easyLiveAuction.com](http://easyLiveAuction.com)  
for live online bidding.

Search our catalogues on [PhilaSearch.com](http://PhilaSearch.com)  
Consignments welcome for our future sales. Please contact us for more information.

[www.cavendish-auctions.com](http://www.cavendish-auctions.com)  
[stamps@cavendish-auctions.com](mailto:stamps@cavendish-auctions.com)

Derby - (44) 01332 250970

Fax. (44) 01332 294440

London - (44) 020 8785 7750



**2292. CONTINUING RESEARCH ON THE GV 1D VARIETIES (Part 59)  
by Gordon Monk; Bert Wajer and the late Paull Kaigg (1727)**

**Pane 6 # 26**

**1<sup>st</sup> State Proof – 7 July 1914 (1<sup>st</sup> half of 1<sup>st</sup> printing).**

1a Top Left Corner. Island flaw inconstant and variable in size.

**2<sup>nd</sup> State 28 July 1914 (2<sup>nd</sup> half of 1<sup>st</sup> printing) – Final**

1a as before.

2a Left Frame. Slightly overhangs general line of frame for 5¼mm from TLC and then abruptly returns to normal, inconstant and variable. 34% of sample had no overhang.

2b Shade Lines. Break in 3<sup>rd</sup> and 4<sup>th</sup> lines below and right of left wattle stem 1½mm from LF and 11 mm from TF, inconstant and variable. No shade breaks on 34% of sample, 6% of sample only 4<sup>th</sup> line broken, 47% 4<sup>th</sup> & 5<sup>th</sup> lines broken, 13% 4<sup>th</sup> to 6<sup>th</sup> line broken.

2c Bottom Left Corner. Corner bulbous with a small notch in corner, found on 69% of samples, variable.

2d Top Frame. Small break or notch 1¼mm left of cross found on 25% of sample, inconstant and variable.

2e Top Right Corner. Shallow curve in RF at TRC making the TF appear to extend to the right found on 15% of sample, inconstant and variable.

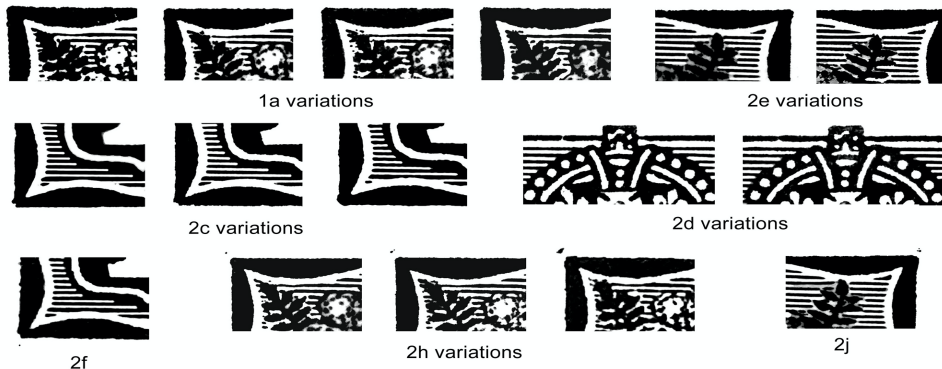
2f Bottom Left Corner. At the end of the print run a faint compartment dot appears under the corner, inconstant.

2g Left Frame. At the end of the print run compartment dots appear at L25 and L81, inconstant.

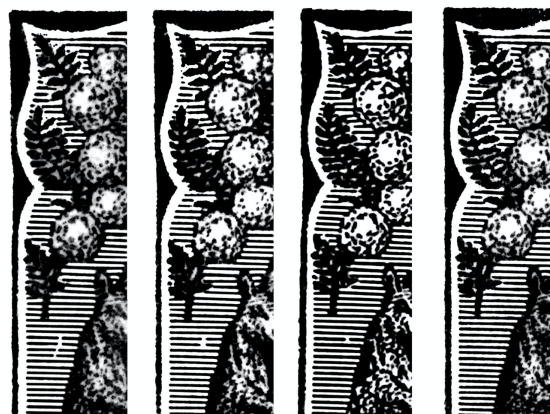
2h Top Left Corner. Late in the print run a faint compartment dot appears over the corner. Later a second dot appears and then they join to form a short line, variable.

2j Top Right Corner. Late in the print run a faint compartment dot appears over the corner, inconstant.

Note Compartment marks are rare on this unit. Similar to 6-14. Issued Mar 2006. Revised Dec



2f, g, h



2a, b variations



## **Pane 6 # 27**

### **1<sup>st</sup> State Proof – 7 July 1914 (1<sup>st</sup> half of 1<sup>st</sup> printing).**

1a Top Left Corner. Island flaw variable in size.

### **2<sup>nd</sup> State 28 July 1914 (2<sup>nd</sup> half of 1<sup>st</sup> printing) – March 1928**

1a as before.

2a Right Fame. Slight shave for 1½mm at top found on 41% of sample, variable.

2b Top Left Corner. Corner raised above the level of TF with a shallow depression in TF just right of corner on 47% of sample, variable.

2c Cross. Top slightly dished found on 38% of sample or broken in centre found on 27% of sample, variable.

2d Top Frame. Notched on inside just left of cross found on 50% of sample.

2e Top Frame. Abrupt curved on inside left of right v-scroll found on 47% of sample, variable.

2f Shade Lines. Breaks in 3 shade lines ½mm from Roo's neck from 1 line above left wattle stem to 1 line below found on 15% of sample, variable and inconstant.

2g Shade Lines. Breaks in 4 shade lines ½mm left of right wattle stem from 1 line above right wattle stem to 2 lines below found on 35% of sample, variable and inconstant.

2h Bottom Right Corner. Right frame notched just above BRC found on 50% of sample.

2j Bottom Left Corner. At the end of the print run a compartment dot appears in line with LF under BF, inconstant.

### **3rd State March 1928 – Final**

#### **Accidental Re-entry**

1a, 2a, b, c, e, f, g, h, j as before. 2d see 3d

3a Top Frame. White border right of cross to TRC wider than normal. Dots of colour are sometimes found in the border.

3b Shade Lines. Top five lines right of cross and top three lines between the wattles weak. 4<sup>th</sup>, 5<sup>th</sup> and 6<sup>th</sup> lines between wattles thicker than normal and often blurred, variable.

3c Shade Lines. Shading left of cross, top 3 lines, thicker than normal found on 8% of sample, variable.

3d Top Frame. Notched on inside just left of cross found on 50% of sample and broken just left of cross found on 18% of sample.

3e Cross. Less white than normal found on 18% of sample.

Note Compartment marks are rare on this unit. Issued Mar 2005. Revised Dec 2017 2b to 2j new.



1a variations

2a variations



2b variations



2c variations

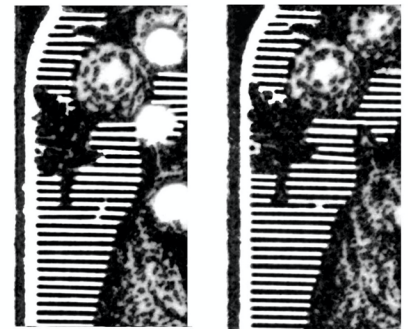
Pane 6 # 27 cont.



2e



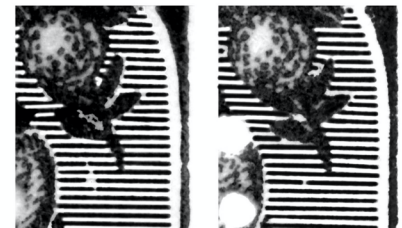
2j



2f variations



3a, b, c variations



2g variations



2d

3d



2h variations



3e variations



**Pane 6 # 28**

A difficult unit to plate because no flaw exists for more than 36% of print run due to inking.

**1<sup>st</sup> State Proof – 7 July 1914 (1<sup>st</sup> half of 1<sup>st</sup> printing).**

1a Top Left Corner. Island flaw inconstant and very variable in shape and size.

**2<sup>nd</sup> State 28 July 1914 (2<sup>nd</sup> half of 1<sup>st</sup> printing) – Final**

1a as before.

2a Bottom Left Corner. A ½ mm notch in bottom of LF inconstant and very variable. Notch found on 28% of sample.

2b Bottom Right Corner. RF shaved for ½ mm above BF and BF extends slightly to the right making the corner pointed found on 19% of sample, variable.

2c Shade Lines. A break in the 3<sup>rd</sup> shade line in the top left corner over the top right wattle leaf tip. It can be a wide break with a dot in the middle or a small break either side of the wattle leaf tip, found on 36% of sample.

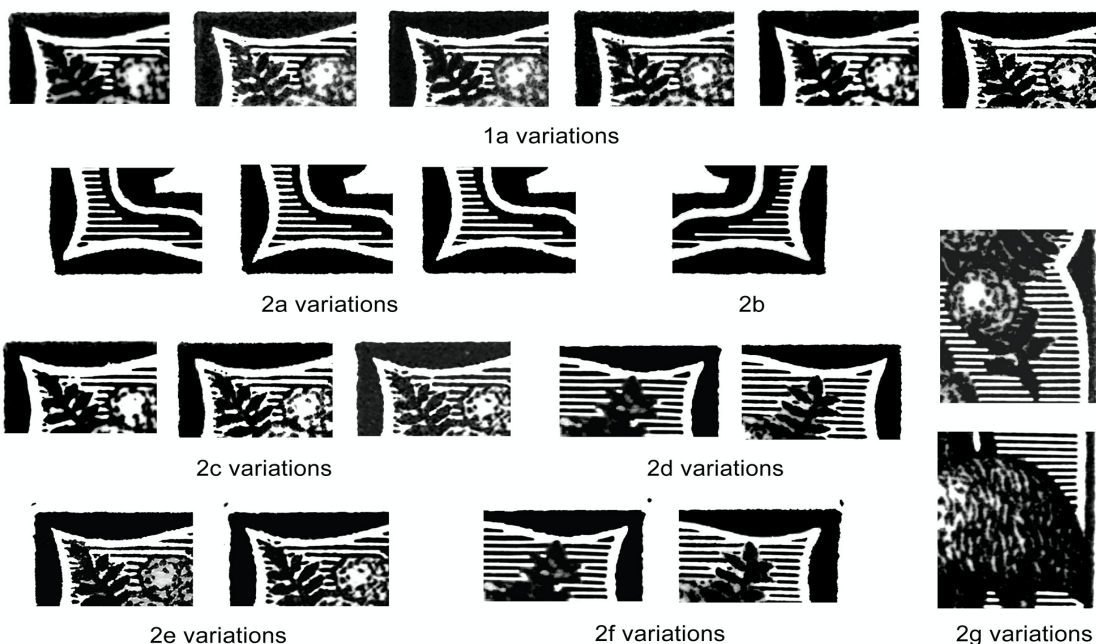
2d Right Frame. Small indentation in frame just below the TRC giving the impression the TF extends to right, found on 28% of sample, variable.

2e Top Left Corner. At the end of the print run a compartment dot appears over the corner.

2f Top Right Corner. At the end of the print run a compartment dot appears over the corner.

2g Right Frame. At the end of the print run a compartment dot appears either at R34 or at R79, to date both marks have not been found on the same unit. If any collector has an example showing both dots on the one stamp a scan of the unit would be appreciated, Gordon Monk c/o acharman@sa.charriot.net.au

Note 2a sometimes resembles 6-30.  
Issued Oct 2007. Revised Jan 2018 2b to 2g added.



**Pane 6 # 29**

A difficult unit to plate because all flaws are subject to inking

**1<sup>st</sup> State Proof – 7 July 1914 (1<sup>st</sup> half of 1<sup>st</sup> printing).**

1a Top Left Corner. Island flaw inconstant and very variable in shape and size.

**2<sup>nd</sup> State 28 July 1914 (2<sup>nd</sup> half of 1<sup>st</sup> printing) – Final**

- 1a as before.
- 2a Top Right Corner. Starts normal but as the print run progresses gradually extends to right, found on 36% of sample, variable.
- 2b Bottom Right Corner. In mid print run a small spur appears on the corner and then gradually grows in size to a small bump found on 23% of sample, variable.
- 2c Cross. Gentle right to left slope found on 82% of sample, variable. Unit's only constant flaw.
- 2d Bottom Frame. Slightly raised under NE P of ONE PENNY causing a narrowing of the white margin found on 18% of sample, variable.
- 2e Left Frame. Slightly thinned behind Roo's rump 7-9½mm above BLC found on 23% of sample, variable.
- 2f Left Frame. Late in the print run a compartment dot appears 9¼mm above BLC and ¾mm from LF, often removed during perforation.
- 2g Top Right Corner. At the end of the print run a compartment dot appears over the corner in line with RF, inconstant.

Note Issued Apr 2003. Revised Jan 2018 2b to 2g added.



1a variations



2a variations

2c

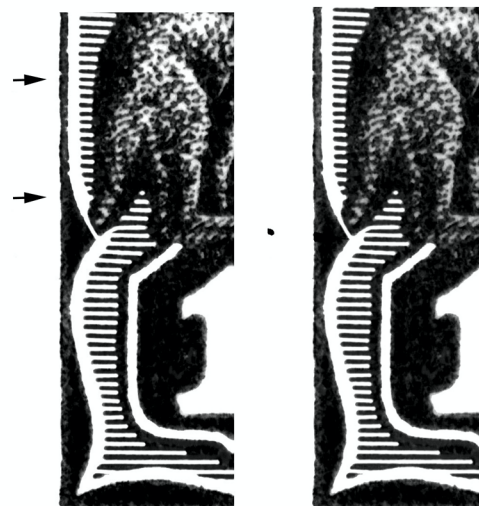


2b variations

2g



2d



2e

2f