

Australian Journal of Philately

(Incorporating: The Date Stamp and Australian Journal of Postal History)

No. 162 December 2022



IN THIS ISSUE

From the President

Mooral Creek Post Office N.S.W.

Private Postal Wrappers: March to Your own Drummer

Melbourne's Philatelic Bureaus & Sales Centres

Gaston Ebinger – Belgium Illustrator, Greeting Card
Designer & Advertising Artist

Hand-Held Date-Stamp Notes

Meetings: The Australian Philatelic Society meets 4 times per year on the third Monday of (February, May, August, October, November), at 7.45 pm . **Purves House, 303 High Street, Ashburton, VIC, 3147 .**

Visitors welcome.

Subscription: Membership categories and annual costs in \$A – net. All categories have www.aps.org.au website access as long as you have email access.

Electronic:	4 emailed copies per year, worldwide cost	\$ 25
Australia:	4 hard copies B & W per year, stapled double sided A4	\$ 39
Asia/Pacific:	2 hard copies B & W per year, stapled double sided A4	\$ 43
	4 hard copies B & W per year, stapled double sided A4	\$ 55
ROW:	2 hard copies B & W per year, stapled double sided A4	\$ 49
	4 hard copies B & W per year, stapled double sided A4	\$ 68

(* airmail is now the only AP option)

Webmaster: Tom & Ruth O’Dea

Website address: <http://www.aps.org.au>

<u>Secretary:</u>	<u>Journal</u>	<u>Treasurer</u>	<u>HHDS Notes</u>
John Young 82 Fordham Avenue Hartwell VIC 3124 Australia	Tony Lyon 2/2 Edith Avenue Croydon, VIC 3136 Australia Phone: 0412 997 675 Email: lyonaj@optushome.com.a	Vacant	George Vearing Box 426 Mooroopna, VIC 3629 Australia Ph: 03 5825 3194 g_vearing@hotmail.com

Correspondence: All to the Secretary except as noted. Journal articles to be with the Editor by 15 February, May, August and November respectively.

OFFICE BEARERS 2023 - 2024

President	:	John Young
Secretary	:	Vacant
Treasurer	:	Brian Fuller
Committee	:	Tony Lyon
Editor, AJPH	:	Tony Lyon

Advertising in the Journal:

Half Page \$A30.00	Please send copy to the Editor
Full Page \$A50.00	
Full Page Colour \$A100.00	

Disclaimers:

Articles in this issue of The Australian Journal of Philately do not necessarily reflect the opinion of The Australian Philatelic Society Inc. or of the Editorial Committee.

Copyright of each article in this issue of The Australian Journal of Philately is owned by the author, unless otherwise stated. Permission to reproduce articles must be obtained from the copyright owner, who normally should be contacted through this Society.

Date	2023 Programme	Display
20 February 2023	TBA	TBA
15 May 2023	TBA	TBA
21 August 2023	TBA	TBA

Contents

Editorial	3
From the President	4
Mooral Creek Post Office N.S.W.	5
<i>Tony Curtis PSM</i>	
Private Postal Wrappers: March	8
To Your own Drummer	
<i>Dr John K. Courtis FRPSL</i>	
Melbourne's Philatelic Bureaus & Sales Centres	14
<i>Brian Fuller</i>	
Christmas Greetings	29
<i>Tony Lyon</i>	
Gaston Ebinger – Belgium	30
Illustrator, Greeting Card Designer & Advertising Artist	
<i>Tony Lyon</i>	
Advert	31
Back Page: Postcard from Afghanistan	32
<i>John Young</i>	

Front Cover:

Charles Birk's Department store

Charles Birk opened a drapery store in Hindley Street, Adelaide in 1864, and later moved to Rundle Street. His son, Napier, expanded it to a five storey department store which is shown on this advertising envelope with a meter franking [printed matter rate] of 1 1/2 pence in 1945.

The Birk family were important benefactors, and Napier part financed Hubert Wilkins' polar exploration and P G Taylor's aerial surveys.

Birk's department store was taken over by David Jones in 1954.



Editorial

Tony Lyon

Another year coming to a close. I hope it has been a good one for you. Australia Post continues to struggle to provide an acceptable service.

I had reason to purchase on line a part for my printer as Officeworks didn't have it in stock and the helpful staff member advised me that they had checked and only two outlets had it in stock and one of those outlets was online only. I ordered it directly from Epson and paid for Express Post service. I expected it next day but when I checked Australia Post tracking it showed that the parcel had left Sydney, arrived at Mooroolbark and a few hours later sent to Bayswater with the notation that it had failed to be pick up and it was being returned to sender.

This was curious as Express Post required a signature and if nobody was at home would be sent to the closest Post Office and a card left advising unable to deliver. We were home all day and no attempt was made to deliver to my home and the closest Post Office is Burnt Bridge 800 meters from my house.

I spoke with Epson and then lodged a complaint with Australia Post. The item left Epson on the Thursday was at Mooroolbark Friday and on to Bayswater a couple of hours later. I arrived home mid-day Tuesday to find the parcel sitting at my front door; so much for signature required. If this is what you get for Express Post \$9.50, I don't think it is values for money.

Thank you for all who contributed during 2022 to enable this journal to exist.

Have a great Christmas.

Until next time ciao.

Privacy Statement

The Society collects, uses, discloses and holds personal information of members in accordance with the Commonwealth Privacy Act 1988.

The Society collects personal information about a member in order to:

1. maintain a current membership list;
2. inform members about the Society's activities;
3. publish details of members, with their consent, in the AJPH or other Society publications.

Members' personal information will be kept confidential and secure and will not be accessible for unauthorised use, amendment or disclosure. Members may seek access to and lodge any complaints about their personal information by contacting the Society's Privacy Officer, John Young.

The Society will strive to ensure that the personal information of members is accurate, up to date and complete. Members can assist the Society in this task by providing correct information and advising when details have changed.

From the President

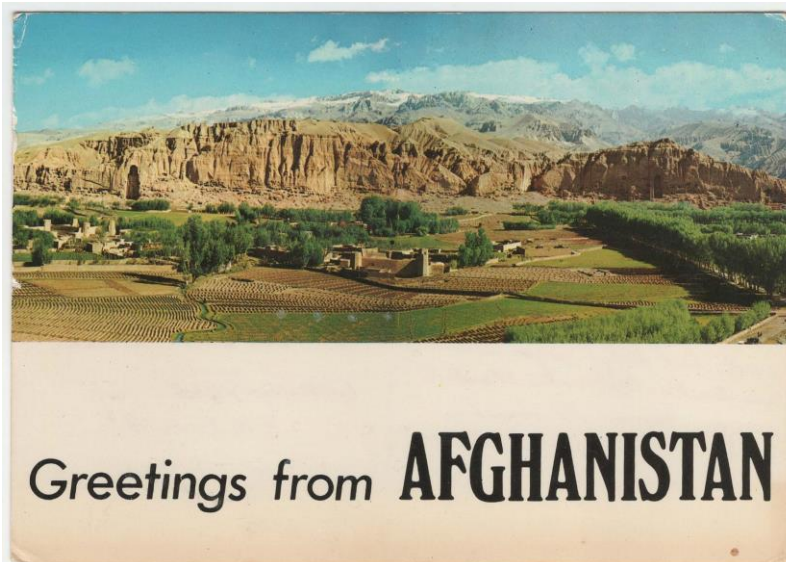
Readers of our last journal may remember the post card sent from Afghanistan to Australia in 1976. It dated from the tourism period, before the Russian and Taliban invasions.

The postcard shown here is dated 1979. Written by an Australian tourist on his way to Iran and Turkey, it has remarks which included an observation of notable Russian influence in Kabul. {Russia invaded Afghanistan a few months later.} The message led on to the tourist visiting an illegal gun factory and a hashish factory. There were 'pencil guns', cost \$5, but a bit inaccurate for rabbit shooting. Sounds like the Wild West or, if you asked an English officer from the Indian frontier, the Wild North-West.

The picture side of the post card shows the Bamyán valley of the Buddhas, which apparently have survived the Taliban occupation.

The airmail franking for the post card was 30Afs, the same as in 1976. On a somewhat sombre note, will we find many post cards after 1979?

* * *



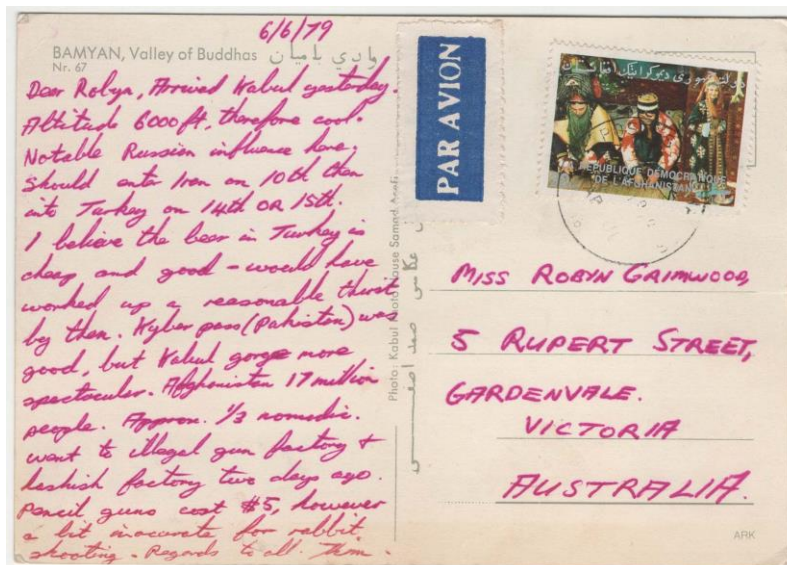
Subscriptions:

If you have not paid your subscription for 2022-23, please send it now. The best way is by direct payment to our Commonwealth Bank account, Australian Philatelic Society 06 3134 0090 1086. Ensure the teller records your name.

The Covid shutdown, and possibly members' advancing years, have obliged us to review the syllabus for members meetings.

Attendances have been meagre. We shall have four meetings in 2023, not six, on the third Monday evenings in February, May, August and November.

Meanwhile, a happy Christmas and New Year to all.



Mooral Creek Post Office N.S.W.

Tony Curtis PSM

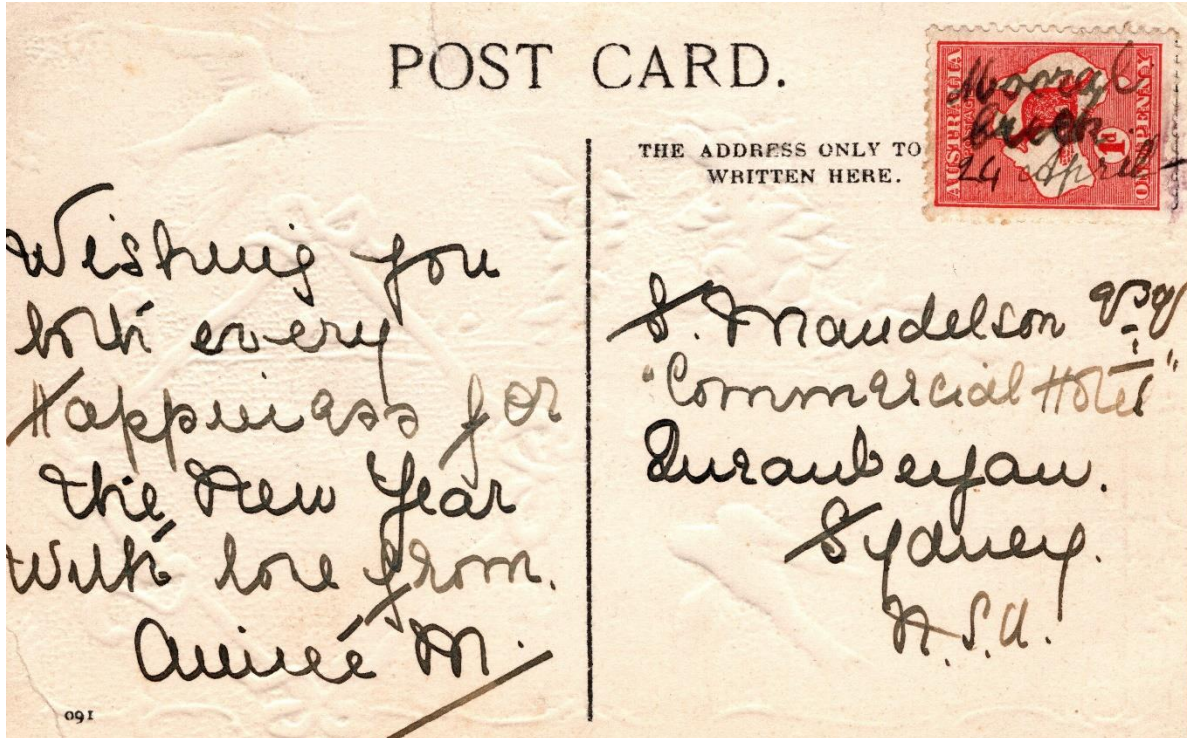


Figure 1

The black ink manuscript cancellation 'Mooral Creek 24 April', tying a 1d red Kangaroo to a period postcard, addressed to hotelier, Sigmund Mandelson, "Commercial Hotel", Queanbeyan, Sydney, N.S.W., is the only postmark recorded by Hopson & Tobin from the Mooral Creek Post Office, N.S.W., during the period of the Office operating as a receiving office only (Fig 1)(1).

Located on the eastern bank of the perennial stream, *Mooral Creek*, the *Mooral Creek* farming settlement was approximately 5 kms West of *Killabakh* and 33 kms north northwest of *Taree* on the mid north coast of N.S.W. (Fig 2)(2).

Ex. the Hart correspondence, estate of the late Miss Matilda (Tilly) Hart, a former employee of the Mandelson family, who passed away at Yass N.S.W. in 1948, the correspondence was bequeathed by Miss Hart to a niece and acquired by me privately from the family in 2008. Whilst the year date is omitted from the manuscript cancellation, the postcard, containing a New Year's greeting, appears to have been belatedly forwarded to the recipient, probably in April 1914.

The addressee, Sigmund Mandelson previously owned and was Licensee of the *Commercial Hotel* in Queanbeyan. However, by 1913 he had bought and was operating the *Australian Hotel* at Yass and the *Commercial Hotel* was renamed the *Tourist Hotel*, information apparently unknown to the sender. The Mandelson's periodically visited Queanbeyan from Yass (3).

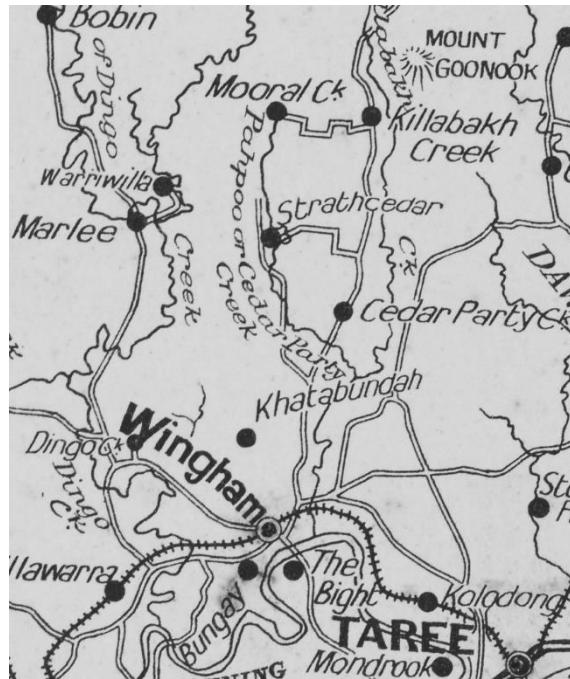


Figure 2

Establishment of Receiving Office

Following representations from the Strathcedar Farmers and Settlers Association, the Moorah Creek Receiving Office was established at 'Glenola', the residence of dairy farmers Henry and Caroline Ford, depicted in the left foreground of the circa 1928 photograph of Moorah Creek (**Fig 3**)(4). The Office opened on 2 August 1913, with Henry Ford appointed Receiving Office Keeper.



Figure 3

The Receiving Office was described by the District Postal Inspector as servicing 21 householders and 10 other adults, together with 10 casual employees engaged in dairy farming. Prior to the Office opening residents had reportedly been travelling between 2 and 6 miles for their mail (5).

An earlier office of the same name located south of *Mooral Creek* opened in 1907. However, the name was changed to *Strathcedar* in May 1910.

On 5 February 1925, Moorall Creek Receiving Office was upgraded to a Telephone Office and in 1927, a Post Office, with Henry Ford appointed postmaster. A telephone exchange was installed on 8 May 1928 and the Office closed on 28 November 1972. Henry Ford passed away at his property at Moorall Creek on 17 September 1955.

Manuscript Cancellation

Comparative analysis of the handwriting comprising the manuscript cancellation, with that of an example of Receiving Office Keeper, Henry Ford's handwriting, contained on the official Moorall Creek Post Office file (Fig.4)(5), confirms Ford to be the author of the manuscript cancellation, there being a number of component identification features common to both examples.



Figure 4

As discussed above, the established provenance of this manuscript cancellation, precludes it being the example listed by or known to Hopson & Tobin in their Monograph (1). However, it remains the only example known to me and accordingly is rated RRRRR, only 1-2 copies known. The example was one of three different NSW RO manuscript cancellations found on mail items contained in the Hart correspondence. Regrettably, I have not been able to identify the sender of the postcard or their connection to the addressee. The text suggests that the sender is more than likely to have been a relative, close friend or perhaps a former employee of Sigmund Mandelson.

References

- (1) Hopson, N. C and Tobin, R *N.S.W. and A.C.T. post, receiving, telegraph & telephone offices: their circular date-stamps and postal history*. N. Hopson & R. Tobin, [Sydney], 1991.
- (2) H.E.C. Robinson Ltd. *Robinson's four-mile map of N.S.W Sydney*: Published by H.E.C. Robinson Ltd, 1913. Web. 6 August 2018 <http://nla.gov.au/nla.obj-232270558>
- (3) Hart Correspondence – Postcard collection of Miss Matilda Hart - 2006
- (4) Manning Valley Historical Society Inc. N.S.W. (2008)
- (5) National Archives of Australia: SP32/1 MOORAL CREEK

Private Postal Wrappers: March to Your Own Drummer

Dr John K. Courtis FRPSL acapjaic@friends.cityu.edu.hk

Existing contemporaneously with Post Office wrappers were postal wrappers of a private nature. These are not included within the domain of postal stationery because they do not show an indicium with the amount of prepaid postage. The mailing rate for private wrappers is paid using postage stamps or meters and the wrappers may be plain or show private overprinting. These types of wrappers have been collected by postal historians as examples of rates for weight differences, routes, uncommon destinations, postmarks and auxiliary markings.

Social philatelists are also interested in private wrappers which show private overprinting, or a merchant handstamp or an address label, so that they can develop a backstory about the wrapper, the nature of the sender, and the identity of the recipient. The route and means by which it was carried from A to B is also of interest and the more comprehensive the story, the more the wrapper is brought to life.

Private wrappers can also be useful to thematic collectors. A great deal of subject matter can be found within the illustrations, and the stamps and meters themselves.

The purpose of this paper is to illustrate and discuss some new applications for the collecting of private wrappers. While private wrappers can be collected intentionally for their social story, they can be collected also because of their aesthetics, scarcity, and their flexibility in exploring new directions of collecting. In some cases, they are the only known surviving wrapper from a particular user. One of the freedoms of philately is that each collector can play by their own rules (to quote a tv advertisement). Ten applications are illustrated to demonstrate the versatility of private wrappers. This paper concentrates on wrappers without private overprinting although some of the areas discussed can apply equally to wrappers with private overprinting.

Labels

There are label societies and specialisms in the study and collection of registration labels and airmail etiquettes. Postal labels used in the processing of the mail also include express labels, certified labels, insurance labels, official seals, parcel post labels, mail routing labels, plus labels specifying the class of mail and forms of accountable mail, plus customs labels, C.O.D. service and others. There is also a series of multi-lingual retour labels which were introduced to explain reasons for non-delivery because bad handwriting by postal carriers often resulted in misinterpretation.

One obvious omission to the list of labels is address labels, which include sender details often with illustrations to add emphasis. These sender address labels are used in lieu of private overprinting of the wrapper itself for increased flexibility, especially if enclosures required different sized wrappers. The detail on these sender labels ensures accurate identification of the delivery address and shows the nature of the sender and frequently the implied nature of the contents. The detail, especially where illustrations are added, are relevant to social philately. This author knows of no mention in the philatelic literature about printed sender labels, nor of any wrapper collection based on address labels.

While studies exist on destinations and collections built around uncommon destinations, there is no counterpart study of senders as identified on address labels. The area is therefore a novel new field. A casual inspection of about 2,000 images of private wrappers without overprinting indicates sender labels can be found for 36 countries and postal entities: Algeria, Argentina, Australia, Austria, Belgium, Belize, Cameroun, Ceylon, China, Denmark, Egypt, Falkland Islands, France, Great Britain, Germany, India, Italy, Korea, Lebanon, Luxembourg, Malta, Mexico, Morocco Agencies, Netherlands, New Zealand, Palestine, Philippines, Poland, Portugal, Romania, Russia, Sierra Leone, Switzerland, USA, Vietnam and Yugoslavia. This list is extensive and diverse, but not exhaustive. There is scope here for an interesting and original collection and write-up based on these sender labels, two examples of which are shown as Figure 1.

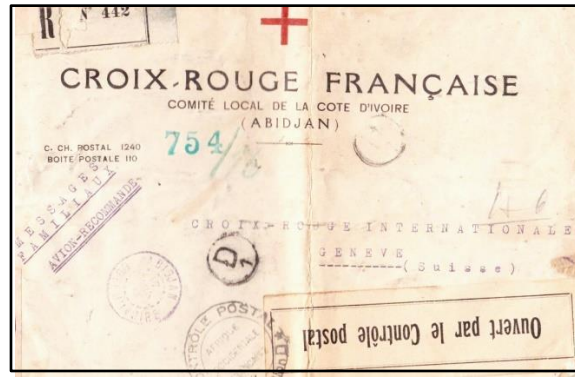
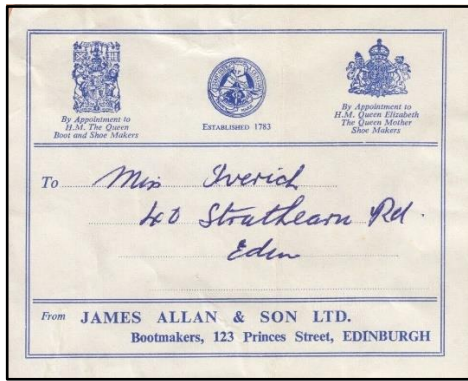


Figure 1 – Address labels: Scotland, Bootmakers; Ivory Coast, Croix-Rouge Française

Cross Shapes

There are only a few examples where wrappers have been arranged to resemble a cross. This arrangement is so as to prevent the enclosure from slipping out and its possible loss. Note that these are narrow wrappers. The author has seen less than ten examples of this usage. Other examples have been noted from Italy, French Senegal and Russia. Alternative approaches are to use string around the entire including the wrapper or to enclose the ends with stickers. (Stickers, or red wax contravene U.P.U. regulations which require the ends of folded wrappers to be open for inspection.) Two examples are shown in Figure 2.



Figure 2 – Cross wrappers: examples from Belgium and France

Bisect Stamp

The reason for the use of a bisect stamp on a wrapper usually is because the correct value stamp is not available. A stamp of double the value is cut, usually on the diagonal and is used to pay the correct rate. A stamp of the correct rate may be out of stock and the Post Office is awaiting fresh supplies to arrive from an overseas printer. The bisect may be needed as a provisional stamp due to a sudden rate change for this class of mail. While the innovative use of a bisect is normally cut on the diagonal, it can also be found cut vertically into two or even three sections, and two examples are shown in Figure 3.

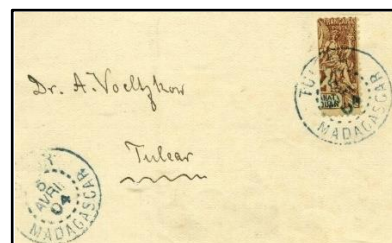


Figure 3 – Bisect examples from Mexico (diagonal) and Madagascar (vertical into three)

Bisect stamps can be found on private wrappers of Azores, British Honduras, Belgian Congo, Belgium, Chile, China Funchal, Cuba, Czechoslovakia, France, Germany, Gibraltar, Greece, Guernsey, Hungary, Italy, Jamaica, Madagascar, Mexico, Nicaragua, Poland, Portugal, Romania, Serbia, Spain, USA and Yugoslavia. There are more than 80 examples in the author's database across at least 26 countries. There are enough bisects on wrappers to develop an interesting collection together with the reasons they were created. It may be that some bisects were contrived to create a collectable. A collection of private wrappers and their display built around bisected stamps is another original area for exploration.

Directly on Newspaper

Before Post Office postal stationery wrappers came into use, some newspapers were permitted to place the stamp directly onto the face of the newspaper with the address detail added or on a separate plain wrapper. Two examples are shown in Figure 4.

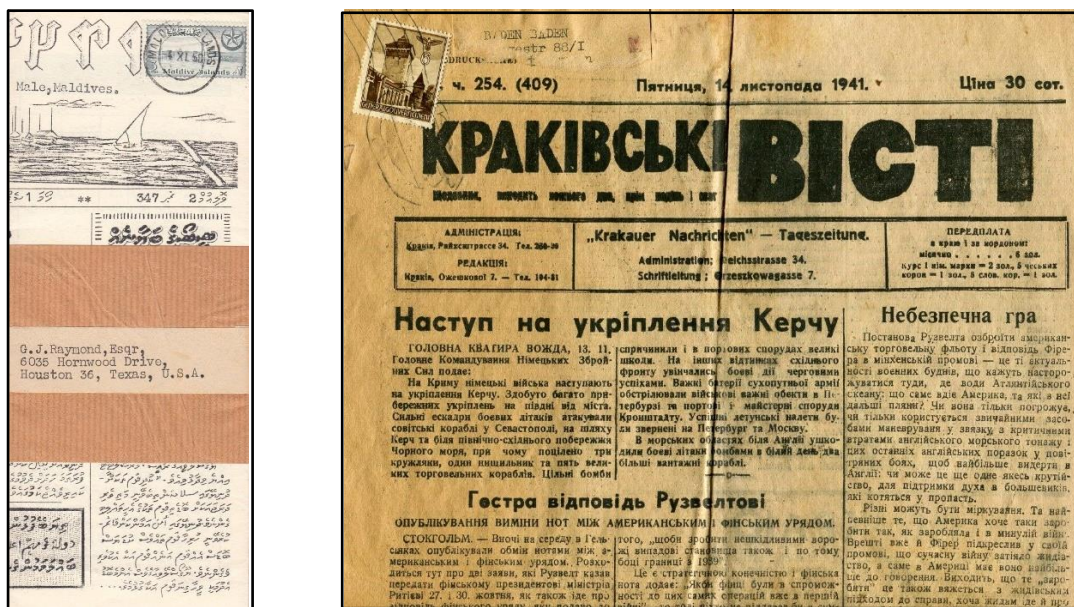


Figure 4 – Stamp applied directly onto the newspaper: examples from Maldive Islands and Ukraine

For private wrappers without overprinting, examples of stamps applied to newspapers are uncommon. The author has found examples for Egypt, France, India, Iran, Maldive Islands, Poland, Romania, Ukraine and Victoria.

Parcel Wrappers

Unlike today, where most parcels are actually sealed cardboard boxes or padded envelopes with provision for sender and addressee details, parcel wrapping was undertaken by the sender. Although strong brown paper was the norm, other material such as fabric was used in some countries, for example, India. This type of wrapper can be studied for ratings across different weight scales. for registration use, labels, censor and other auxiliary markings, postmarks, large multiples and high denomination stamps. This is another original area. There has been no documentation in the literature on the role and usage of parcel wrappers. The author's database contains 231 examples across 69 countries. It has been noted that there is a robust collector demand for these parcel wrappers, likely not for their own sake, but because they can be used in an exhibit or write-up to demonstrate a particular type of usage. Two examples are shown in Figure 5.



Figure 5 – Examples of Parcel Wrappers, Korea and Canada

Mourning

Mourning wrappers were once a visible part of a social custom in sending condolence messages when someone passed away. The colour black became the standard for mourning in Western societies and thin strips of black edging can be found printed on wrappers and sometimes their contents. Mourning wrappers are difficult to find as most items are more of the nature of a lettersheet or handwritten correspondence dealing with legal matters such as a Will. Mourning items can be categorized into death notices, funeral notices, remembrances, sympathy expressions, benevolent dues notices, souvenirs and correspondence, this latter category was the most employed. Identifying what is a wrapper and what is a letter sheet often requires inspection of the actual item because they can be folded to appear alike.

In addition to Great Britain, there are eleven countries with examples of mourning wrappers in the database: Belgium, Canada, Finland, France, Italy, Malta, Netherlands, Russia, Spain, St. Pierre & Miquelon and Venezuela. While mourning envelopes are not uncommon, finding mourning wrappers is a challenge. This area allows for an original approach for a collector. Two examples are shown in Figure 6.



Figure 6 – Examples of mourning wrappers with black edging for Italy and France

Fantasy

As the heading implies, these are not real wrappers but are contrived fantasy wrappers prepared just for fun. They are not intended to deceive but were prepared to add a touch of entertainment. Occasionally they can be found listed on eBay ex Jim Czynl who passed away in 2014. He was a leading authority on cinderellas, bogus and fantasy stamps.

Many years ago, I visited a Stamp Show in Hamilton, Ontario, Canada and amongst the exhibits on display was one that showed a one frame history of the construction of a bridge from Toronto to upper New York State. It was brilliantly contrived with covers and postmarks and even showed burnt covers and water damage when parts of the bridge collapsed. The story-line was plausible as if the bridge had actually been built, but the entire frame was a fiction to add some levity to an afternoon's browsing.

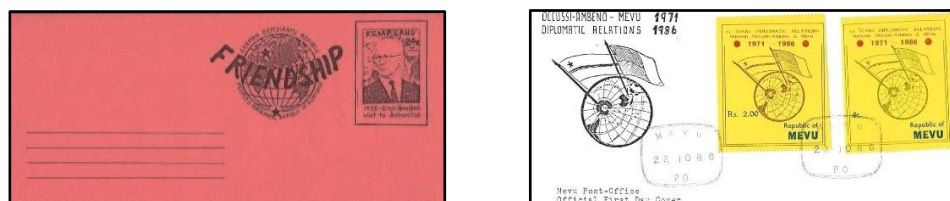


Figure 7 – Fantasy wrappers for the fictitious Kempland and Antarctic Island Mevu

Meters

Some senior philatelists, when preparing an exhibit including usages on cover, have remarked that payment by meters is one of the hardest types of covers to find, and for many countries, none have been recorded in the database. While they do exist for a handful of countries, such as Great Britain and India, they are elusive. Normally they are not especially expensive. The database contains meters for Austria, Bangladesh, Belgian Congo, Czechoslovakia, France, Great Britain, Italy, Malta, Monaco, Netherlands Indies, Netherlands, Norway, Poland, Russia and the Vatican. Another original collection could be based around the application of meter postage on private wrappers. Two indicative examples are shown in Figure 8.

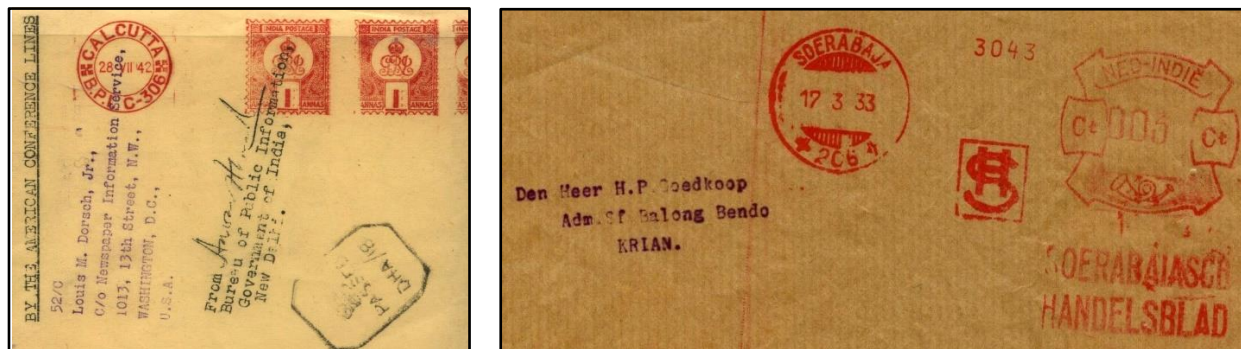


Figure 8 – Examples of meters on wrappers of India and Netherland Indies.

Special Postmarks

Anything connected with postmarks has been referred to as a rabbit warren. The pathways that can be undertaken when collecting postmarks is formidable. Any type of postmark issued to commemorate a special event would qualify in this category. This is an area where each collector sets their own rules. Two examples are shown in Figure 9.

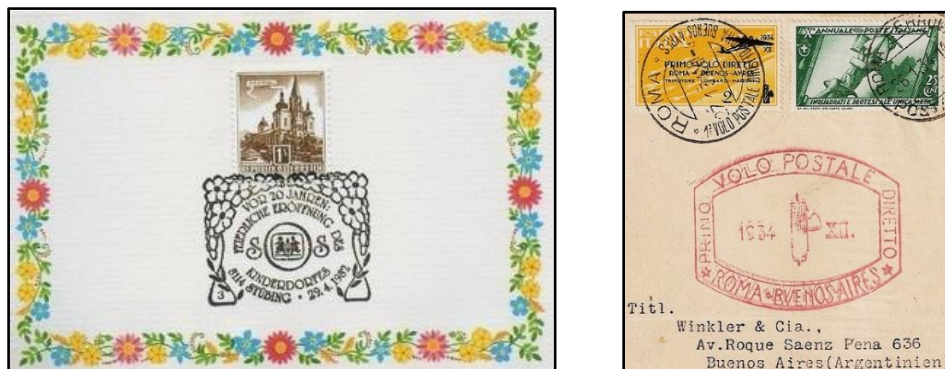


Figure 9 – Examples of Special Postmarks for Yugoslavia and Italy

First Flight

The author visited a Stamp Show in Canada many years ago where on one dealer's table there was a shoe box containing first flight covers. As these were browsed it became apparent that anyone could have had a First Flight handstamp made and then applied to many copies of the same cover. In other words, there was no evidence that these covers had actually flown on a first flight. They were too pristine and too similar. With regard to private wrappers that purport to have been flown under this banner, there seems to be evidence of usage. Not only have stamps been used and postmarked, but the covers appear to have actually passed through the mails.

Aerophilately is a popular area of philately with a large collector base. First flight covers are not uncommon, but private wrappers are a challenge. The database includes first flight or the anniversary of first flight wrappers from Australia, Bermuda, Brazil, Italy, Germany and USA. Two examples are shown in Figure 10.



Figure 10 – Australia-South Africa First Regular Flight; Brazil Primeira Mala Aerea via Panair

Summary

Philately has been around for almost two centuries, perhaps longer if the pre-adhesive period is included. During that time a formidable list of collectable areas have been developed embracing stamps, covers and markings. Coming up with something fresh is increasingly difficult and yet, new ideas still continue to emerge. This paper has identified a number of original areas where imagination can take the collector in different directions. Using private wrappers as the basis, collections can be built around ten areas: sender address labels, unusual shapes, use of a bisect stamp to pay the postage, stamp applied directly onto a newspaper with or without a wrapper, parcel wrappers, mourning wrappers, fantasy wrappers, the use of meters to pay postage, special commemorative postmarks and wrappers which show some evidence of first flight usage. Collections built around one or more of these areas will add interest and zest, not to mention fun. Collectors can march to their own drummer.

Acknowledgement

My thanks to Allan Gory for reading and commenting on an earlier draft.

MELBOURNE'S PHILATELIC BUREAUS & SALES CENTRES

by *Brian Fuller* – 23JUL22

There were for Melbourne City, Philatelic Bureaus (PB) and Philatelic Sales Centres (PSC) etc at places such as GPO Eliz St, or GPO Spencer St etc, (ignoring Russell, Bourke, Collins, or King etc) plus other not immediately obvious places to disburse stamps and provide other philatelic material e.g., First Day of Issue (FDI) covers to customers. My prime interest is Melbourne City:

- Philatelic Bureaus,
- Philatelic Sales Centres/Philatelic Sales Sections - terms appear interchangeable,
- Stamp Sections (own ID), and
- those date stamps not signifying the exact office of origin and are FDI of the style, "Melb Vic 3000".

Prime dates: GPO Spencer St (GPOSS) from 4JUN1917 – 1JAN64, Spencer St PO (SSPO) from 1JAN64 – 20NOV65, GPO Elizabeth St – 1JAN1964 until FIRE 10SEP2001, and GPO 250 Eliz St (Annexe) <7APR2006 and GPO 260 Eliz St. Also, PB at Royal Mail House (RMH) 253 – 267 Bourke St Melbourne 6JAN64 – 31DEC76. My AP Timelines article in the Australian PS Journal has other related times.

I have tried to decipher the AP Philatelic Bulletins to ascertain physical locations of these places and their period of operation such that owners of impressions are able to confidently state where they were used. The earlier Bulletins were relatively helpful but around 1990ish they became basically sales magazines and of little help to Postal Historians.

By perusing the pictures of FDI etc on their covers it often gave clues as to when a date stamp was used. Very few of the related type are shown. With the introduction of the National FDI (19AUG87) their display ceased. Only pictorial were shown and few were relevant to my search. These National postmarks were not available for private covers. However, in 1989 it seems people were collecting them on private covers so no restriction.

The Bulletins also did not allude to the reasons for change of PO Box and phone numbers. Nor to the concluding date of Bureaus etc. Sprintpak was seemingly never Bulletin introduced (circa 1970) so their involvement muddies the water. I suspect they are not the current PHILATELIC BUREAU in Melbourne City, so it has ceased to exist long ago. The current address of Sprintpak, "Philatelic **Mail Order** Bureau" implies this.

The current GPO does not have any cancels other than numbered MELB VIC 3000 type and has not possessed any others for many years.

At the time when I first visited that was true. However, on 22JUN22 when I revisited there were only two date stamps available to me. Their impressions are as follows.



Routine – not numbered



FDI

Not the type sought by this paper albeit Melbourne Vic 3000. The book "**Pictormarks**" is a good reference source for this type of cancel. I expected other date stamps but when asked none were offered, and they were too busy to give more assistance. Only two for several positions at the two long counters? Another visit is necessary.

I also discovered the A'Beckett St PO had closed early in 2022.

Bulletin Extracts

GPOSS (MME Building)	4JUN1917
GPOSS C1 (ditto)	1JAN64 Bulletin reference.
Phil Bureau GPOSS	<AUG1953 Bulletin reference
Phil Bureau Royal Mail House	6JAN64 Bulletin reference
PSC GPO Eliz St	24MAY1965 Bulletin reference

Terminology

PB is Philatelic Bureau.

PSC and PSS are interchangeable! Philatelic Sales Centre or Section. However, there are complicating terms. There are PSC and Australian PSC. The PSC sells Australian and Agencies philatelic material whilst the Australian PSC only sells Australian material.

Stamp Sections as per the GPO Spencer St Stamp Section.

Summary of Bulletin information.

The material is included to ensure we all have the same material to draw conclusions!

Phil Bulletin 1 AUG53 For Bureau mail – including overseas, "Director Posts and Telegraph (Philatelic Bureau) GPO Melbourne C1". Physical location <APR65 at 664 Bourke St beside the MME building (688 Bourke St) but separated by a laneway.

NB The GPOSS STAMP SECTION closed 9JUN54. The Philatelic Bureau was established in the GPOSS sometime before AUG 1953. Actual 23FEB53. Also had counter sales.

What was used? See Note 6 and relevant date stamp in the below PB Table Note 6 date stamp 4MAY55.

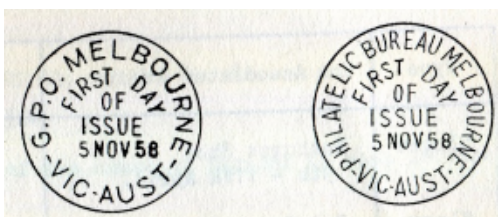
Also If you want FDI you supply SAE covers TO PB GPO SPENCER ST at least 3 days before issue date. The Department **WILL NOT** supply ENVELOPES (logo unknown) to requesters.

Mail order "Director Posts and Telegraphs GPO Melbourne C1 Victoria". Obviously money order and cheque control.

Bull 6 JUN54 A special Dept envelope (undefined) can be provided at 2d per cover and if you want the Dept to affix stamps etc another 2d plus stamp costs. 7 days notice required. Also modify letter address to include (Philatelic Bureau).

Bull 31 AUG58 FDI postmarkers approx. early SEP58 to be available at GPO Melb & Philatelic Bureau Melb etc.

Bull 34 FEB59 FDI postmarkers mentioned in Bull 31 AUG58



Postmarkers as per **Bull 31**
27APR70

FDI GPO still used RMH

BULL 63 DEC63 Philatelic Sales Centre (PSC) opens at Russell St 21OCT63 but with distinctive FDI cancels. Their first FDI is 25OCT1963. PB GPOSS all counter sales have been suspended. Correspondence to PB GPOSS to be readdressed to PB SSPO.

BULL 64 FEB64 Telepost Royal Mail building 253 – 267 Bourke St, built 1961 – 63, opens on 6JAN1964 and the SSPO Phil Bureau staff move to the two upper floors. There is NO public counter for counter sales.

GPO Title moves 1JAN1964 back to Elizabeth St and Spencer St PO (SSPO) formed. Philatelic Bureau remains but NO counter sales. **Bull 108 JUN71** implies that Royal Mail House (RMH) is finito with Sprintpak handling the PB role etc.

Date stamps GPO MELBOURNE used at Elizabeth St and SPENCER STREET MELBOURNE C1 VIC AUST at SSPO.

BULL 71 APR65 Philatelic Sales - PB 664 Bourke St Melb & PO Russell St.

BULL 73 AUG65 Mail order sales are still directed to 664 Bourke St until <APR1965.

24MAY1965 there were restricted philatelic activities at GPO Melb (Eliz St) for FDI of Churchill stamp.

GPO Melb 24MAY1965 FDI covers sold and also still accepting mail for PB 664 Bourke St. Also to continue and to **postmark FDI covers at each office.**

Postmarkers being obtained showing, “**PSC FDI and named Office**”.

Bull 74 OCT65 FDI covers for o’seas buyers for DEC currency conversion ask for all-inclusive service – PMG covers 3d and non-PMG <9d.

Bull 85 AUG67 O’seas mail order for stamps 664 Bourke St. For Australian - Russell St PO.

NB AUG67 PB address still at 664 Bourke St.

Bull 94 AUG69 PSS Australian collectors should lodge orders, by mail or over the counter, for stamps and/or first day covers at the Philatelic Sales Section in the capital city of their State Bureau, 664 Bourke Street, Melbourne, Victoria, Australia 3000.

All overseas sales to 664 ONLY!

DEC69 for Overseas PB orders were to “OIC Philatelic Bureau 12th Fl 374 Bourke St. On the north side just west of Elizabeth St.

Bull 99 1DEC99 (69?) PB 12th Fl 374 Bourke now PO Box 9988. Is that Sprintpak? Believe so!

Bull 100 FEB70 the only listed **PSC** was Russell St. For **FDI only** - GPO Eliz St, Law Courts and Market St.

Bull 101 APR70 The Bulletin fundamentally changes design. Also, the PSS (Section) mailing address changed to "your local Capital City". Overseas mail orders to 374 Bourke St again.

Bull 104 OCT70 PB Melb replaced its steel FDI (Note 4 with Note 1) with a rubber one



FEB71 VIC mail orders to Russell St now processed by PB 12th Fl 374 Bourke St then sent to RMH or Sprintpak? Counter sales continue at Russell St PO.

Bull 107 APR71 Overseas and VIC mail order to PB 374 Bourke St.

Bull 108 JUN71 VIC Mail Order stamps Box 9000 GPO MELB 3001 – Sprintpak? Is this era when Sprintpak intervened? They advertise 1970 origin. Actually doing? I have approached the AP Sprintpak Liaison Officer directly, but I am not hopeful of a response.

Australia Post **Sprintpak** is a supplier of self-adhesive dispenser roll and booklet stamps, gummed stamps and related philatelic product such as stamp albums, FDCs, postmarking, stamp packs, retail and collectables packaging. **Since our inception in 1970**, we have produced a range of coin, numismatic and stamp collectable and souvenir packed product for Australia Post,

Bull 110 DEC71 A cover FDI GPO/MELB/31AUG70/FDI



Bull 120 JUN74 Overseas to still write to PB 374 Bourke St

Bull 129 SEP76 O'seas Mail order is 374 Bourke.

Bull 130 DEC76 Mail order is Box 9000 Melb 3001. Is this Sprintpak? **PB RMH finito?**



Bull 131 MAR77 p69 shows CDS GPO M...E /11OCT76/-VIC -AUST- 31mm. Used on flight commemorative cover.

Bull 132 JUN77 Mail Order has Box 9000 AND lists (Tel 62 5744)

Also: PSC/S provided at major cities and can buy Oz, Territory, and Agency stamps.

Bull 134 DEC77 Phone number now 609 4290.



Bull 143 OCT79 FDI on Xmas 79 cover. S'pak.

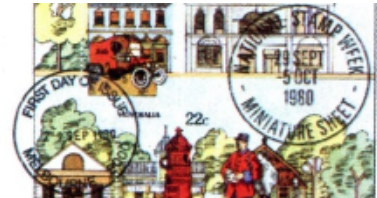
Also: **VIC Mail** order for **stamps** GPO Box 9000.

BULL144 JAN80 **ALL Oz** Mail order for stamps GPO Box 9988. Sprintpak again?

Also: The PSC has moved to GPO in Bourke St on 10DEC79. **The move is temporary.**

Is this a move from PO Russell St to the GPO???? See Bull 100 FEB70 - Only FDI at GPO Eliz.

Bull 147 MAY80 **Melb GPO is PSC. Downgrades Russell St PO** to FDI issue postmarking only.



Bull 150 SEP80 Proves S'pak issued FDI M....E See **Bull 143.**

Bull 156 SEP81 GPO Melb PSC to have, "every day pictorial postmarker available".

13 other Melb PO to "have FDI pictorial postmarker available"? **To produce or only on sale?**

Bull 157 OCT – DEC81 The GPO PSC to be relocated NOV81 to corner Little Bourke and Eliz St. (GPO Annexe/Post Shop). **NB old was a magnifying glass until 29JAN82 and the new is not defined!**

The archive copy date stamps (21MAR77 and 3AUG79) would be from GPO Eliz St when being transferred to the Annexe. Anyone disagree?

Bull 158 JAN - FEB82 Now DEC81 and new date stamps replacing existing ones at this office.

Bull 166 MAY - JUL83 PSC still at Annexe.



Bull 175 NOV-DEC84 Double FDI –FDI depicted 4APR84 Sprintpak.

Bull 176 JAN-FEB85 Last day of use CDS FDI Melb 3000 25FEB85 S'pak. Ref **Bull 143 OCT79**

Bull 177 APR85 PSC still at Eliz Lt Bourke GPO Annexe (named GPO Post Shop).

Bull 185 AUG86 Send all MAIL ORDER GPO Box 9988 your capital city. VIC 03 609 4693.

Bull 188 JAN87 First Day postmarks go NATIONAL and are reserved for AP pre serviced FDI covers.

Bull 188 JAN87 Pictorial FDI, National FDI and 191 Queens St shooting.

Single Issue Pictorial First Day of Issue Postmarkers

First day of issue postmarks with designs complementing specific stamp issues are available in Victoria. Pre-serviced covers are available from all Victorian official post offices. Interstate and overseas collectors may order these covers from the Melbourne Philatelic Bureau. Orders for servicing of private covers should be directed to the listed office and must reach the office on or prior to the day of the issue.

As from the High Technology issue (19 August 1987), a national design and postcode for pictorial First Day of Issue postmarks will be introduced. Pre-serviced first day covers will be available from all offices that normally sell first day covers and through Philatelic Mail Order offices.

National postmarks are reserved for Australia Post pre-serviced first day covers and will not be available for the cancellation of private covers.

The national postmarks are similar to postmarks appearing on corresponding maximum cards (although the words "first day of issue" will not appear on the maximum card cancellations). As with the national first day postmarks, maximum card cancellations will not be available on private articles.

PHILATELIC BUREAU NEW TELEPHONE NUMBERS

Readers will be aware that the Philatelic Bureau was relocated following the tragic events on 8 December when a gunman ran amok at Australia Post's Victorian Headquarters. Three Bureau staff members were among those who lost their lives and another was seriously wounded.

New telephone numbers for Philatelic Bureau mail order enquiries are: 669 7760 and 669 7761.

Extract letter 15DEC87

involved members of the Philatelic Bureau staff. As a consequence of these events, the Philatelic Bureau is being re-located at a new address within the city of Melbourne. New numbers for Bureau telephone enquiries are: (03) 669 7760 or (03) 669 7761. The mail order box number (GPO Box 9988, Melbourne) will remain unaltered.

Bulletin of 18JAN89 seems to acknowledge the "untruth" of **Bull 188** (middle article). Private covers have been getting the National FDI postmark.

Bull 200 JUN89 Melb PSC transferred from GPO Annexe to 410 Elizabeth St Melb on the corner A'Beckett and Elizabeth St. Was formerly located at corner Elizabeth and Lt Bourke St.

<p>COMMEMORATIVE POSTMARKS <i>are available through our Standing Order Service.</i> For details, write to the Philatelic Bureau, GPO Box 9988, Melbourne 3001.</p>	<p>MELBOURNE PHILATELIC SALES CENTRE The Melbourne Philatelic Sales Centre has a new direct-line telephone number . To contact the Sales Centre, please telephone (03) 663 8037.</p>
---	---

Bull 201AUG89

MAIL ORDER PHONE ENQUIRIES

Telephone enquiries relating to philatelic mail orders should be directed to: **008 331 794*** (Melbourne metro: 669 7760).

* From anywhere within Australia for the cost of a local call.

Please send all mail orders and written enquiries regarding mail orders to:

FREEPOST 9988
Australia Post
Philatelic Bureau
GPO Box 9988
MELBOURNE VIC 3001

Note: You do not need a stamp when responding to a FREEPOST address within Australia.

Also:

Bull 244 MAR98

APB ph. 1800 331 974.

10 Sep 01 Fire in Elizabeth St GPO Postal Hall destroys GPO and terminates operations there.

date?? GPO functions transferred to a now defunct PO diagonally opposite in 374 Bourke St, west of Elizabeth St, and possibly to 410 Elizabeth St the A'Beckett St PO. I am unsure if a GPO legally exists, but the title has been "adopted" by 260 Elizabeth St PO. The Box Room I think also went to two locations and is now located at 380 Bourke St.

Summarizing

Not been an easy journey to find the history of the Melbourne PB and its PSC/PSS.









The only reasonable conclusion I have reached is the PB went from GPOSS (664 Bourke St) to Royal Mail House (253 – 267 Bourke St) via PB OIC (12th fl 374 Bourke St) and then transferred to PB (Mail Order) Sprintpak.

AP obviously intercepted all mail orders and was sent to the PB for action wherever it was.













I have many date stamps and have arranged them as best I can by period of use and where I think they were used. Please advise if there are any others and if positive, where you got it from.

A further contention is the quality of the date stamp impressions. Many samples have the date stamp at angles to the horizontal whilst others are beautifully aligned. I contend the "crooked" are probably hand done at whichever place PB/PSC etc referred to, whilst the straight were PRINTED by machine at Sprintpak. All Bulletin examples are Sprintpak originated.





First Day of Issue. Location not guaranteed.

<p>S'pak or GPO Eliz St?</p>  <p>31AUG70 – 1NOV76</p>	<p>S'pak</p> 	<p>GPO Eliz St 37mm</p>  <p>Never used? Chunk out.</p>	<p>S'pak or GPO Eliz St?</p> 
<p>See Note 1</p>	<p>See Note 2</p>	<p>P is archive strike.</p>	<p>See Note 3</p>
<p>S'pak</p> 	<p>S'pak 31mm</p> 	<p>GPOSS 31mm</p>  <p>O between SS</p>	<p>GPOSS 30mm</p>  <p>O over second S</p>
<p>4APR84 - 1NOV85</p>	<p>Commem flight cover</p>	<p>See Note 4</p>	<p>See Note 4</p>




First Day of Issue continued. Location not guaranteed.

GPO Eliz St  1JAN2001	GPO Eliz St  1JAN2001	S'pak 33 x 33  Larger hyphens re Note 1	S'pak 30.5 x 31  Large hyphens
Personally obtained	Personally obtained	19DEC79 – 30APR80	29SEP80 – 1OCT80
S'pak 31 x 31  Hyphens above date line Plus 3 copies 4OCT99	S'pak 32.5 x 32.5  Hyphens level with Date	S'pak 30.5 x 31  Hyphens level with Date	S'pak 31 x 31 
6APR81–13SEP85 break	22OCT85 x 3	25AUG86-28SEP88	2JAN92 only
S'pak 33 x 33  8SEP94 only	S'pak 29 x 31  6JUN96 only	GPO Eliz St 33 x 33  Personally obtained 1JAN2001	GPO Eliz St 31 x 31  Archive less C1 27APR70 26AUG66 only





Philatelic Bureau usage including FDI.

S'pak? and RMH  Note 5 - before A	S'pak  Note 5 – after A	S'pak  Note 6	S'pak  Note 7
--	--	---	--





Philatelic Bureau continued

S'pak? 	GPO Spencer St 	GPO Spencer St  O between SS	GPO Spencer Street  O over S
Note 8	Note 9	Note 10	Note 10
GPO Spencer St 	GPO Spencer Street  Phil Bull 34 AUG59		Spare
Note 11 (in RED)	5NOV58– 19OCT66		

Philatelic Sales Centre usage including FDI - 2Tables

GPO Eliz St? 	GPO Eliz St?  Never used?	S'pak/GPO Annex 31  LD is on Annexe closure.	PSC? 32 x 32 
Note 12	Archive 21MAR77	22AUG83- 19MAR92	9OCT74 – 30SEP81

The next 4 date stamps have a very detailed **Note 13** that must be read. Not obvious as the date stamps I suspect changed from steel to rubber and then progressively distort over time. Being replaced with more of the original manufacturer or intermingled use. There are breaks in the period of use.

GPO Eliz or Annex?  P down.	GPO Eliz or Annex?  P up.	GPO Eliz or Annex?  P up.	GPO Annex?  P up. Note break near P.
Refer Note 13- 1	Refer Note 13-2 to - 9	Refer Note 13-2 to-9	Refer Note 13 - 9

Note 1 Primarily Sprintpak as the issues of the years of the date stamps varies slightly each year. Thus:

31AUG70 – 2NOV70	36.5 x 37mm	21APR71	36.5 x 36.5
18APR72	36.5 x 37	11JUL73	36.5 x 36.5
21NOV73	37 x 37	9OCT74	35.5 x 37
29OCT75	36.5 x 36.5	1NOV76	36.5 x 37.5mm

11JUL73 and 1NOV76 have significantly larger dates than the others.

Final two date figures >70 are all distorted. Hand applied at S'pak (?) and many are "crooked".

Note 2 ED 9MAY77 – 24SEP79. LD is when Annexe closes or as per Bull 143 - LD is 24SEP79.

The date stamps have been applied by both Sprintpak and the GPO Annexe.

There appears to be two major damage occurrences:

26JAN78 – 19APR78 at 3 O' clock a 3mm chunk removed from rim.

19JUN78 no breaks evident.

3OCT78 – 1NOV78 the 3000 appears as 3-0-0-0 or similar.

13AUG79 – 24SEP79 no faults

Note 3 Light printing 28mm 30APR80 – 25MAY83 & Dark printing 28mm 19MAY82 – 6OCT82.

The light impressions are generally "crooked" and the dark are straight. Dark are S'pak?

Note 4 O between SS. Two slightly different diameters.

5JUL61 – 21MAR62 31 x 31mm

18OCT61 – 31MAR70 31 x 30.5

O over second S. Two slightly different diameters. Bulletin 34 FDI 5NOV58

2FEB59 – 2NOV60 30 x 30mm

30JUN65 – 7OCT70 30 x 30.5

On 5 out of 12 strikes the middle – is missing. These date stamps are missing the period after O in GPO.

The 7OCT70 is an archive strike implying use at GPO Elizabeth St. Steel and or rubber date stamps?

Note 5 2 types where the U in BUR is relative to dateline. Plus vertical position of arrow FRONT or BEHIND the A in PHILATELIC. The **Bull104 OCT70** FDI date is 31AUG70. Diam 34 x 34mm.

Arrow front of A.

U approx. in line	21APR71 – 17JUN81
Break at 4 O' clock	16OCT74 (bulge) & break 15JAN75 – 14MAY75

Arrow behind A

	U well above	29SEP80 - 22APR85
Note 6	37 x 37mm	8JUN95 2 off
	38 x 37	4SEP97
Note 7	36 x 38mm	14FEB91
	37 x 37	14FEB91
	37 x 38	14JUN91 – 1OCT91
Note 8	37.5 x 37.5mm	18SEP85 – 25JUN90
	On 28SEP88 “damage” under R of M...E.	
	28SEP88 – 28OCT88 no damage	
	On 25JUN90 “damage” under E of M...E. Both probably transient.	
	38 x 38	9OCT90 only (change of address cover).
Note 9	4MAY55 – 10JUL63 at GPOSS PB	
	Damage occurs at many places on the rim from 13NOV58	
	GPOSS PB period 30.5 x 30.5mm 4MAY55 – 10JUL63 ED should be 23FEB55 – Bulletin data.	
	RMH period 25MAY64 – 4JUN64 ED could be 6JAN64 Bulletin data.	
Note 10A	PB GPOSS	
	(1) Diam 30.5 x 30.5mm 20SEP61 – 26SEP62	
	F of First between IC in LIC	
	Has O of OF virtually between SS of ISSUE,	
Note 10B	Diam 30.5 x 30.5mm	21SEP60 – 25OCT63 then at RMH 21OCT64
	F of First in line with I of LIC	
	Has O of OF virtually between SS of ISSUE	

Note 10C PB GPOSS
Diam 30 x 30.5mm 5NOV58 – 18AUG60
I in LIC and FIRST virtually line up.
O over second S in ISSUE.

Note 10D Royal Mail House (RMH)
Diam 30.5 x 30.5mm
F of First in line with I of LIC
Has O of OF virtually between SS of ISSUE
21OCT64 – 20OCT65 then date gap.
Badly damaged several places on rim 27NOV68 – 4JUN69

Note 10E Royal Mail House (RMH)
Diam 30.5 x 30.5mm 31MAR70 – 27APR70
F of First between IC in LIC
Has O of OF virtually between SS of ISSUE

Note 10F Royal Mail House (RMH)
Diam 30.5 x 30.5mm 21APR65 – 20SEP67
I in LIC and FIRST virtually line up.
O over second S in ISSUE.

The RMH latest possible date is late 1970 or 1971? Then Sprintpak subsumed the RMH PB functions?

Note 11 Sixth VPA Congress 28NOV59 in RED. Applied PB GPOSS states A Salisbury. 30.5 x 30.5mm. All copies appear damaged at C and at U in Bureau similar to Note 9.

Note 12 The date stamp is oval horizontally 37 x 38mm on all 7 copies. 10JUN74 – 19FEB76.
Bulletin 157 DEC81 LD is 29JAN82.

Note 13 These four date stamps are the product of initial use appeared to be a steel date stamp. The subsequent ones were a rubber stamp pad and several were probably purchased at or about the same time. I suspect they were randomly used so there is not a consistent pattern of use before it was replaced. Consistently measuring to 0.5mm was difficult! I first measured the vertical height then the horizontal width. Most are oval. The placement of the P relative to the date line assists with the first date stamps identification.

13- 1 32 x 32mm P below 20DEC74 – 2APR82 Reused 29SEP89 – 3MAY91 P - M 4mm.

13 - 2 32.5 x 33 P above 27JAN83 – 5MAR84 light ink, & 2OCT91also P - M 6.5mm.

13 - 3 32.5 x 34 P above 5MAR84 – dark ink

13 - 4 33 x 33 P above 7JUL83-10FEB84 & 27JUN86-21SEP87 & 4JUN90 – 28APR94

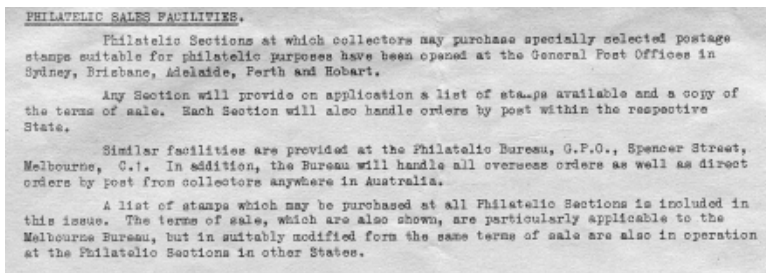
- 13 - 5 33 x 33.5/34 P above 27SEP83 - 30APR85 & 28JAN87 - 12OCT93. 34 is a worse 33.5?
- 13 - 6 33.5 x 33 P above 9MAR84 – 14MAY84 reused 2SEP88 – 26MAR92
- 13 - 7 33.5 x 33.5 P above 29AUG91 – 28APR94
- 13 - 8 33.5 x 34 P above 13DEC84 – 1MAY87
- 13- 9 34 x 33.5 P above pre break 18APR84 – 18APR86
Break near P 16DEC86 – 3MAR89.

GPO Spencer St (GPOSS) PB

This information was incorporated in my paper on GPOSS. Extracted as it is relevant to this paper.

It shows the complexity of operations of a PB replacing a Stamp Sales Section which in this case were near each other.

Philatelic Bureau



Phil Bull 1 AUG53

The Philatelic Bureau was established in the GPOSS sometime before AUG 1953. (Phil Bulletin 1 AUG53). Located at 664 Bourke St beside the MME building (688 Bourke St) but separated by a laneway.

Quote Phil Bulletin No5 APR54, "A distinctive postmark in the form illustrated (23FEB55) (GPOSS35) 30mm in diameter is now in use at the Philatelic Bureau Melbourne". However, I measure the date stamp as 30.5mm (31mm?). I have also similar design and different diameters! Measure carefully horizontally and vertically.

What canceller was used circa <21APR53 and 23FEB55 as FDI from GPOSS please?

The following Wide World cover may answer several questions. R6 Reg Label, GPOSS PB CDS and GPOSS Registration cancels.



Backstamps

FP

Frank Pauer (FP) has provided a copy of a PMG cover that appears to have been in use since 1929 (FP). Whilst not FDI many FDI covers may have this design. (Also see below).

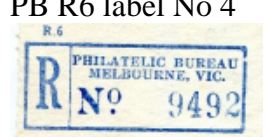
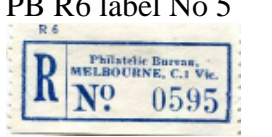


The PB stamp cancel (and reverse) is 21MAY53 a FDC for the 31/2 red. The R6 label and Registration cancel from 21APR53 is from the Registration Section of GPOSS. The PB simply walked the cover into the MME building and was processed outwards from there. It arrived Camberwell 22APR53 on the way to Hawthorn.

I have a strong suspicion the dates stamps GPOSS 10, 18 and 20 were co-opted to cancel first day covers.

The PB finalised its operation after the GPO function on 1JAN64 was transferred back to Elizabeth St. However, the SSPO retained the Bureau **but with NO counter sales**.


GPOSS PB did NOT have a registration date stamp but had a R6 label. See below tables for PB labels.

PB R6 label No 1 	PB R6 label No 2 	PB R6 label No 3 
1DEC54	8APR59	28MAR66 Not Spencer St

PB R6 label No 4 	PB R6 label No 5 	PB R6 label No 6 	PB R6 label No 7 
--	--	---	--

NB these are heading difference only. They come in sheet and coil and the heights of the N and serial number differ. Labels 4 – 7 are also NOT tied so no dates of use. Some probably used in Royal Mail House!

The Philatelic Bureau was re-established in Royal Mail House (RMH) 253 – 267 Bourke St. The staff from SSPO Bureau were transferred on 6JAN64. RMH did not have counter sales to the public.

GPOSS 35 31mm 	GPOSS 36  Red	GPOSS37 30mm  - VIC AUST -	GPOSS38 31mm  - VIC - AUST -
Expected 23FEB55 9MAR55-19JUL63	28NOV59 Only	5NOV58-25OCT66	9JUL61 – 19OCT66

If GPOSS closed 1JAN64 and SSPO closed 20NOV65 which office(s) then continued to use the FDI cancels GPOSS37 and 38? RMH or were they transferred to GPO Elizabeth St?

What was the practice before? It appears you made your own and cancelled wherever. The first FDI cover for PMG I am aware of is 10MAY37 but expected them to be available from 23FEB55 to match the issue of the postmark. Please advise.



Date stamp 10MAY37

Quote the Guru (FP): "The 1937 Coronation issue was the first time the PMG had produced a First Day Cover. Between 1937 and 1954 before the Hermes Generic FDC was released at the Philatelic Bureau.

The practice was that you could send your covers to the Phil Bureau or the Philatelic Sales Centres to the Philatelic Bureau and get your stamps postmarked FDI".

STAMP SECTION (28FEB36 – 9JUN54) GPOSS apparently had a Section where philatelists could receive specialist attention. Possibly as part of the public counter. All have MELBOURNE date stamps. Private annotation of FDI was often applied to the cover.

My glimmer of proof about where was the R6 applied is: **All** tied labels I have are either clear of the RED lines or on top of the lines about the same place. If the counter did them, they would have charged X\$\$\$ then labelled and red lined and over the label for those misplaced.

Anyone have a tied Stamp Section R6 with RED over them please?

There are myriads of R6 types!



CDS No 30 9DEC54. Despite the R6 there is no registration cancel. That (if applied) was applied in the GPOSS Registration Section. This Section was subsumed by the PB in 664 Bourke St which apparently did have counter sales. These in turn had ceased on 1JAN64 when the GPO returned to Elizabeth St.

Sales of stamps etc to the public from a Philatelic Bureau ceased! You had to attend a PSC or write in and apply. The only functional PSC was at Russell St PO.

SSPO



On the reverse are two shocking date cancels. One is REGISTRATION/3 20NOV65 3/MELBOURNE and the other REGISTRATION/22NOV65/VIC-AUST. Both applied in the REGISTRATION Section of the Central Mail Exchange (CME). This cover also verifies the last day of use for SSPO C1 No 2.

On the 20NOV65 the SSPO was closed subsumed by King St PO. The MME housed only the now CME function from 20NOV65.

Summary

I have not purposely collected FDI etc and are collateral from other purchases. Hence, may be far from complete. Some of the ED and LD etc are from the Bulletin illustrations.

A difficult topic that also seems to have slipped under our watch. With your comments and helpful research this may help many people sort their collections. Please advise your concurrence or suspicions!

Christmas Greetings

Tony Lyon

Christmas Airgraph dated 15 Nov 1943 sent by Lieutenant William Hantz McClure 71095. Lieutenant McClure served with the New Zealand Base Post Office.

The NZ Base Post Office during the period 12.5.41 to 13.1.46 was located at Cairo, Shria Maspere.



Gaston Ebinger – Belgium Illustrator, Greeting Card Designer & Advertising Artist

Tony Lyon

I find postcard depicting humorous military scenarios quite fascinating and below are two examples by Gaston Ebinger Belgium.



Caption: "An eyecatcher" dated 17/9/44
Scottish soldiers.



Caption: Chocolate for Mamy? Cigarettes for Papy?
Biscuits for Baby. Dated 23/9/44.
Canadian Soldiers

Gaston Ebinger

Ebinger was perhaps best recognizable to general audiences as a greeting card designer. For the "Provinciale Commissie voor Kunstambachten en -Industrieën" ("Provincial Commission for Art Crafts and Industries") he designed postcards depicting Antwerp city life. During the World Exhibition in Antwerp (1930) he made picturesque crowd drawings of people having fun at this event. After the Expo they were sold as a souvenir. When Belgium was liberated from the Nazis in 1944, Ebinger created several post cards about the happy event. They depicted U.S., Canadian and/or British soldiers in comedic situations, or mocked Hitler and his unavoidable defeat. Funny dialogue was written in English underneath each image since the cards were intended as souvenirs for Allied soldiers. They were available in black-and-white as well as colour, the latter a bit more expensive. The initiative sold well among the target audience. Between 1945 and 1948 Ebinger also drew humorous cartoons about the post-war circumstances, often with cameos of Antwerp mayor Camille Huysmans. They were sold as Christmas and New Year cards and/or posters. Ebinger kept making holiday season cards on an annual basis until the 1960s.¹

¹ https://www.lambiek.net/artists/e/ebinger_gaston.htm Internet accessed 7 December 2022

Australian stamp & coin co

stamps - coins - banknotes

AUSTRALIAN STAMPS & COINS

Quality Decimal & Pre-Decimal
Full Range of Australia Post Products
Royal Australian & Perth Mint Products
Sovereigns & 1/2 Sovereigns

WORLD

Gold & Silver Coins, Stamps & Banknotes

TRADE TOKENS - Australasia

AUSTRALIAN BANKNOTES

Decimal & Predecimal

WAR MEDALS & BADGES

ACCESSORIES

Biggest & Best Selection

HOBBY REFERENCE BOOKS

POSTCARDS - CIGARETTE CARDS

SPECIAL OCCASION GIFTS

Australian Coin Sets
With Presentation Cases
Years - 1910 - 1964



Visit our store - next to Harris Scarfe
Trading 7 days a week

WE OFFER • Keen Prices • Rarities to Current Issues
• Stamps • Coins • Banknotes • Accessories

BUYING and SELLING ALWAYS... Discretion Assured

www.australianstamp.com

World Wide Service for Over 18 Years

Currently Serving Customers in 77 Countries



Biggest and Best Display Showroom In Australia



Shop 135, Forest Hill Chase Shopping Centre, 270 Canterbury Road, Forest Hill, Vic 3131
Phone: 03 9878 3411 Fax: 03 9878 3877 Email: sales@australianstamp.com

What YOU can do to help the Australian Philatelic Society?

- Sign up a new member
- Write an article for the Journal (Better still, write two!)
- Send the Editor any interesting philatelic news
- Come to the bi-monthly meeting if in Melbourne
- Help George Vearing with his Datestamp Notes
- Get involved in one of the Study Groups
- Enter the Society Competitions
- Volunteer to display your collection at the monthly meeting
- Ensure the Council receives your feedback and suggestions for the Society

Panama – Pacific International Exposition

John Young

The Pan-Pacific Exposition was held in San Francisco from February to December 1915. Postcards were published and a set of four stamps issued. This card is franked with the 2 cents Exposition stamp, machine cancelled with the Exposition postmark and addressed to Albury Australia. A Christmas sticker is tied by the postmark.

The card's picture side shows the Australian pavilion at the Exposition.

